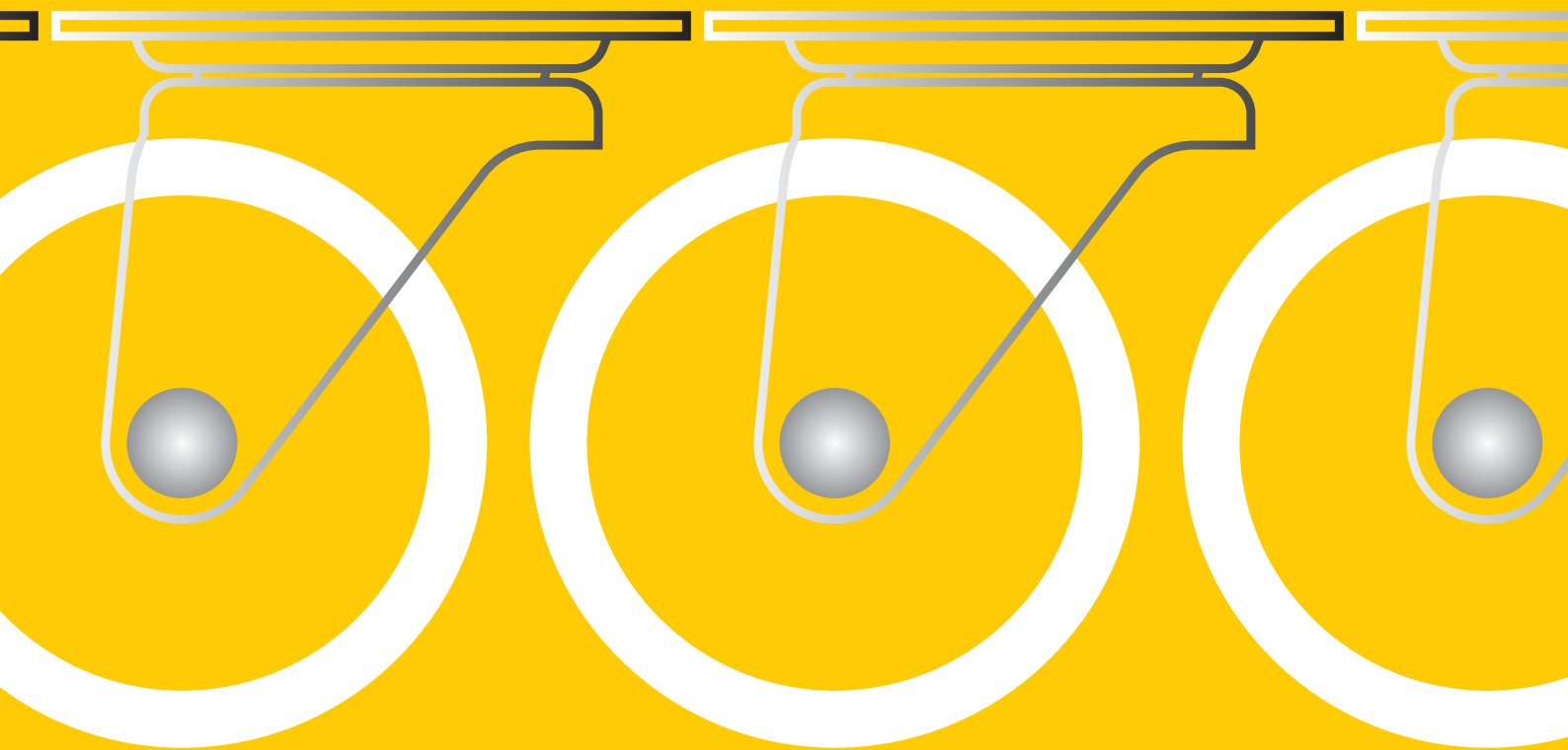


HAMMER CASTER



HAMMER CASTER® JAPAN

HAMMER CASTER

offers a wide range of precision casters developed through our superior know-how.



Head Office

It is an indispensable part in everyday life and business to move and carry things around.

What's more, the factors on carriage have to be considered endlessly including sizes, weights and surrounding environments.

Hammer Caster's mission is to provide the right caster for your particular situation. We offer the right one for you, understanding the specific needs, from our diverse types of casters.



Hirakata Factory

INDEX

Type	Load Capacity	Reference Page
Plate type	8~100daN	2
	50~220daN	3
	140~500daN	4
	120~600daN	5,6
Direction control type	120~220daN	5
Corner Plate type	20~60daN	6
ALL STAINLESS Plate type	30~60daN	7
	50~220daN	7
ALL STAINLESS Corner Plate type	30~60daN	7
Threaded Stem type	25~60daN	8
	60~100daN	8
	50~160daN	8
Plain Stem type	25~160daN	9
ALL STAINLESS Threaded Stem type	30~160daN	10
ALL STAINLESS Plain Stem type	30~160daN	10
Hospital / Special use	100daN	11
Expander Stem type	25~60daN	11
Foothold Caster	100~250daN	11
Hammer Lock	200~300daN	12
The "Quiet" Caster	50~140daN	13
Conductive Caster / Antistatic Caster		14
Cushion Caster	6~30daN	15
Light-load Caster	15~50daN	16
Hammer Caster's Replacement Wheels		17,18

Caution

Avoid using casters in the ways do not follow the intended usage; excessive weight and corrosive material may cause breakage or deformation and shorten the service life.

- Do not use if weight exceeds the capacity limit.
- Do not drag casters down to steps when descending.
- Do not handle casters for a long term as a part of machines.
- The surrounding environments stated below may affect casters: Hot rooms, walk-in freezers and areas where corrosive substances, excessive oil and water are likely to be found.
- Do not move casters when stopper is in the lock position.
- Follow all instructions and occasionally oil the axle and swivel unit to prevent breakdown and ensure the longer product life.



* Please ask us for details about the specially made products or the ones without RoHS icons.

These are the Products of RoHS conformance, which do not contain the certain hazardous substances that RoHS directive restricts.

*Measuring method revision has resulted in the unit of load capacity being changed to the SI unit daN (deca-Newton)

1 daN=10N ≒ 1.02kgf (1kgf ≒ 9.8N=0.98daN)

PLATE TYPE



These are the products of RoHS conformance, which do not contain the certain hazardous substances that RoHS directive restricts.



Special offers as the product of RoHS conformance are available. Please inquire of our sales distributors for the order.



Load Capacity

8daN~50daN

420G



420G-R (25~38mm)

420G



420G-R (50~75mm)

415G
With Stopper



415G-N (50~75mm)

420GRP



420GRP-N (65,75mm)

420E



420E-UR (40~75mm)

415E
With Stopper



415E-R (40~75mm)

420ER



420ER-N (40~75mm)

420R



420R-N (25~75mm)

• Conversion coating with trivalent chrome



Wheel Dia D mm	25	32	38	50	65	75
Load Capacity daN (Rubber wheel)	8	12	20	30	40	50
Over all Height H mm	35	42	50	65	80	90
Bolt Hole Spacing X×Y mm	28×23 (29×0)	30×24 (29×0)	36×28 (36×15)	46×35 (45×25)	55×42 (55×28)	55×42 (55×28)
Bolt Hole Dia P mm	4.2	4.2	5.3	6.5	8.8	8.8

() : 420R

425G(R)

Rubber



25~38mm

425G(R)

Rubber



50~75mm

429G(N)

Nylon



25~75mm

439G(UR)

Polyurethane



.....

499G(MC)

MC Nylon



38~75mm

Wheel types other than those listed above are also available. (See Page 17,18)

415ER
With Stopper



415ER-R (40~75mm)

• 420E, 420ER, 415E and 415ER can be used together.

• Chrome plate finish



Wheel Dia D mm	40	50	65	75
Load Capacity daN (Rubber wheel)	25	30	30	40
Over all Height H mm	58	65	82	92
Bolt Hole Spacing X×Y mm	40×20	56×28	56×28	56×28
Bolt Hole Dia P mm	5.5	6.5	6.5	6.5

425G(R)

Rubber



40mm

429G(N)

Nylon



40,50mm

425E(R)

Rubber



50~75mm

430E(PR)

Rubber



65,75mm

429E(N)

Nylon



.....

439E(UR)

Polyurethane



.....

Wheel types other than those listed above are also available. (See Page 17,18)



Load Capacity

50daN~100daN

420E



420E-R (85~150mm)

415E
With Stopper



415E-UR (85~125mm)

420ER



420ER-PR (100~125mm)

415ER
With Stopper



415ER-UB (85~125mm)

• 420E, 420ER, 415E and 415ER can be used together.

• Chrome plate finish



Wheel Dia D mm	85	100	125	150
Load Capacity daN (Rubber wheel)	50	50	60	60
Over all Height H mm	103	122	148	176
Bolt Hole Spacing X×Y mm	82×40	82×40	82×40	82×40
Bolt Hole Dia P mm	8.8	8.8	8.8	8.8

425E(R)

Rubber



85~150mm

430E(PR)

Rubber



100~150mm

429E(N)

Nylon



85~125mm

439E(UR)

Polyurethane



.....

439E(UB)

Polyurethane



.....

Wheel types other than those listed above are also available. (See Page 17,18)

420M



420M-RB (75~125mm)

420MR



420MR-KUB (75~125mm)

415M
With Total Locking Device



415M-RB (75~125mm)

920M



920M-RB (100~150mm)

915M
With Total Locking Device



915M-KUB (100~150mm)

• Wheels with dust-proof cover
• Uni-chrome plate finish



434MB(RB)

Rubber



75~125mm

434MB(KUB)

Polyurethane



.....

Wheel Dia D mm	75	100	125
Load Capacity daN (Rubber wheel)	60	70	80
Over all Height H mm	102	125	150
Bolt Hole Spacing X×Y mm	76×57	76×57	76×57
Bolt Hole Dia P mm	8.6	8.6	8.6

434M(RB)

Rubber



100~150mm

434M(KUB)

Polyurethane



.....

• Chrome plate finish



Wheel Dia D mm	100	125	150
Load Capacity daN (Rubber wheel)	100	100	100
Over all Height H mm	137	165	194
Bolt Hole Spacing X×Y mm	52×52	52×52	52×52
Bolt Hole Dia P mm	8.8	8.8	8.8

PLATE TYPE



Load Capacity **50daN~60daN**



- 420S, 413S, 420SR and 420SRP can be used together.
- Conversion coating with trivalent chrome

Wheel Dia D mm	50	65	75
Load Capacity daN (Rubber wheel)	50	50	60
Over all Height H mm	70	85	93
Bolt Hole Spacing X×Y mm	55×42 (55×28)	55×42 (55×28)	55×42 (55×28)
Bolt Hole Dia P mm	8.8	8.8	8.8

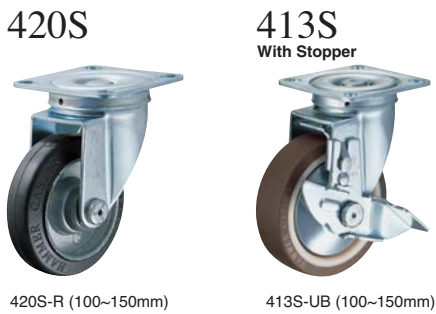
() : 420SR



50mm 65,75mm 50~75mm
Wheel types other than those listed above are also available.(See Page 17.18)



Load Capacity **60daN~220daN**



- 420S, 413S, 420SR and 420SRP can be used together.
- Uni-chrome plate finish

Non-conformance on RoHS

Wheel Dia D mm	100	125	150
Load Capacity daN (Rubber wheel)	120	150	160
Over all Height H mm	132	168	190
Bolt Hole Spacing X×Y mm	68×68 (80×45)	75×75 (100×56)	75×75 (100×56)
Bolt Hole Dia P mm	11	11	11

() : 420SR



100~150mm 100~150, 200mm 100~200mm

Wheel types other than those listed above are also available.(See Page 17.18)



- 400S, 419S, 400SR and 400SRP can be used together.
- Uni-chrome plate finish

Non-conformance on RoHS

Wheel Dia D mm	75	100	125	150	180	200
Load Capacity daN (Rubber wheel)	60	120	150	160	220	220
Over all Height H mm	100	140	174	199	230	240
Bolt Hole Spacing X×Y mm	63×63 (63×40)	70×70 (80×45)	80×80 (100×56)	90×90 (100×56)	100×100 (112×63)	100×100 (112×63)
Bolt Hole Dia P mm	8.8	11	11	11	13	13

() : 400SR



Load Capacity **70daN~120daN**



- Better stability, sufficient rotating and traveling capacities, and excellent durability owing to small overall height and large wheel width.
- Uni-chrome plate finish

Non-conformance on RoHS

Wheel Dia D mm	65	75	100	125
Load Capacity daN (Rubber wheel)	70	80	100	120
Over all Height H mm	82	93	125	159
Bolt Hole Spacing X×Y mm	76×44 (89×28)	87×60 (100×30)	102×76 (125×51)	133×85 (125×64)
Bolt Hole Dia P mm	8.5	8.5	10.5	10.5

() : 440R

PLATE TYPE



These are the products of RoHS conformance, which do not contain the certain hazardous substances that RoHS directive restricts.

Non-conformance on RoHS

Special offers as the product of RoHS conformance are available. Please inquire of our sales distributors for the order.



Load Capacity

140daN~220daN

420J



420J-RBB
(100~150mm)

413J
With Stopper



413J-RBB
(100~150mm)

420JR



420JR-RBB
(100~150mm)

420JRP



420JRP-UBB
(100~150mm)

435S(RBB)
Rubber



100~150mm

423S(UBB)
Polyurethane



- 420J, 413J, 420JR and 420JRP can be used together.
- Uni-chrome plate finish

Non-conformance on RoHS

Wheel Dia D mm	100	125	150
Load Capacity daN (Rubber wheel)	140	200	220
Over all Height H mm	140	174	199
Bolt Hole Spacing X×Y mm	70×70 (80×45)	80×80 (100×56)	90×90 (100×56)
Bolt Hole Dia Pmm	11	11	11

() : 420JR

520M



520M-RB (125,150mm)

425S(R)
Rubber



125,150mm

429S(N)
Nylon



Wheel types other than those listed above are also available. (See Page 17,18)

439S(UB)
Polyurethane



429S(NRB)
Nylon



423S(URB)
Polyurethane



435S(RB)
Rubber



- 420SR and 420SRP can be used together.
- Uni-chrome plate finish

Non-conformance on RoHS

Wheel Dia D mm	125	150
Load Capacity daN (Rubber wheel)	180	190
Over all Height H mm	168	190
Bolt Hole Spacing X×Y mm	80×80	80×80
Bolt Hole Dia Pmm	11	11



Load Capacity

240daN~300daN

520S



520S-NRB (125,150mm)

513S
With Stopper



513S-MCB (125,150mm)

520SR



520SR-RB (125,150mm)

525S(RB)
Rubber



125,150mm

529S(NRB)
Nylon



523S(URB)
Polyurethane



599S(MCB)
MC Nylon



- A caster specially designed for heavy loads.
- Uni-chrome plate finish

Non-conformance on RoHS

Wheel Dia D mm	125	150
Load Capacity daN (Rubber wheel)	240	300
Over all Height H mm	171	196
Bolt Hole Spacing X×Y mm	100×100 (112×63)	100×100 (112×63)
Bolt Hole Dia Pmm	13	13

() : 520SR



Load Capacity

400daN~500daN

500BPS



500BPS-CU
(100~200mm)

519BPS
With Stopper



519BPS-CR
(100~200mm)

500BPR



500BPR-CR
(100~200mm)

500HPS



500HPS-CR
200mm

519HPS
With Stopper



519HPS-CU
200mm

500HPR



500HPR-CU
200mm

502BPS(CR)
Rubber



100~150mm

502BPS(CU)
Polyurethane



502BPS(CR)
Rubber



200mm

502BPS(CU)
Polyurethane



- A caster specially designed for heavy loads with excellent durability.
- Uni-chrome plate finish

Non-conformance on RoHS

Wheel Dia D mm	100	125	150	200
Load Capacity daN (Rubber wheel)	400	450	500	500
Over all Height H mm	142	164	187	246
Bolt Hole Spacing X×Y mm	80×76	80×76	80×76	125.5×62 (100×100)* (112×63)**
Bolt Hole Dia Pmm	13	13	13	13

() * : HPS

() ** : HPR

DIRECTION CONTROL CASTER



Load Capacity

120daN~220daN

400F0S



400F0S-UB (100~150mm)

419F0S

With Stopper



419F0S-R (100~150mm)

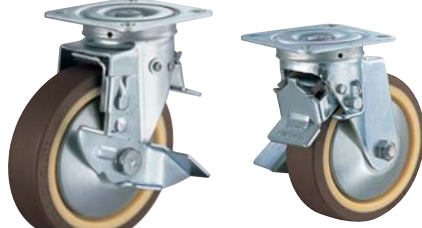
420F0S



420F0S-R (100~150mm)

413F0S

With Stopper



413F0S-UB (100~150mm)

420FAS



420FAS-R (100~150mm)

400FAS



400FAS-NRB (100~200mm)

425S(R)

Rubber



100~150mm

429S(N)

Nylon



439S(UB)

Polyurethane



100~200mm

429S(NRB)

Nylon



423S(URB)

Polyurethane



435S(RB)

Rubber



() :420FAS

- 400SR and 400SRP can be used together.
- Uni-chrome plate finish

Non-conformance on RoHS

Wheel Dia D mm	100	125	150
Load Capacity daN (Rubber wheel)	120	150	160
Over all Height H mm	140	174	199
Bolt Hole Spacing X×Y mm	70×70	80×80	90×90
Bolt Hole Dia P mm	11	11	11

- 420SR and 420SRP can be used together.
- Uni-chrome plate finish

Wheel Dia D mm	100	125	150
Load Capacity daN (Rubber wheel)	120	150	160
Over all Height H mm	132	168	190
Bolt Hole Spacing X×Y mm	68×68	75×75	75×75
Bolt Hole Dia P mm	11	11	11

- 420FAS:420SR and 420SRP can be used together.
- 400FAS:400SR and 400SRP can be used together.
- Uni-chrome plate finish

Wheel Dia D mm	100	125	150	200
Load Capacity daN (Rubber wheel)	120	150	160	220
Over all Height H mm	140 (132)	174 (168)	199 (190)	250
Bolt Hole Spacing X×Y mm	70×70 (68×68)	80×80 (75×75)	90×90 (75×75)	100×100
Bolt Hole Dia P mm	11	11	11	13

Wheel types other than those listed above are also available.(See Page 17,18)

PLATE TYPE



Load Capacity

120daN~600daN

540S



540S-NRB (50~75mm)

540SR



540SR-BAU (50~75mm)

545S

With Stopper



545S-BAU (65,75mm)

550P



550P-N2 (38,50mm)

550R



550R-BN2 (38,50mm)

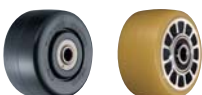
- Of compact design for low fitting, this model has an ample heavy-load capacity.
- 540S and 540SR are of the same overall height and can be used together.
- Black zinc plate finish

Non-conformance on RoHS

Wheel Dia D mm	50	65	75
Load Capacity daN	300	300	300
Over all Height H mm	79	90	100
Bolt Hole Spacing X×Y mm	63×63	63×63	63×63
Bolt Hole Dia P mm	8.8	8.8	8.8

542S(NRB) Nylon

542S(BAU) Polyurethane



50~75mm

- Of compact design for low fitting, this model has an ample heavy-load capacity.
- Black zinc plate finish

Non-conformance on RoHS

Wheel Dia D mm	38	50
Load Capacity daN	120	150
Over all Height H mm	64	77
Bolt Hole Spacing X×Y mm	52×52	52×52
Bolt Hole Dia P mm	8.8	8.8

559P(N2) Nylon

559P(BN2) Nylon



38,50mm

CORNER PLATE TYPE



Load Capacity **20daN~60daN**



These are the products of RoHS conformance, which do not contain the certain hazardous substances that RoHS directive restricts.

Non-conformance on RoHS

Special offers as the product of RoHS conformance are available. Please inquire of our sales distributors for the order.

220G



220G-UR (50~75mm)

215G
With Stopper



215G-R (50~75mm)

425G(R)
Rubber



429G(N)
Nylon



439G(UR)
Polyurethane



499G(MC)
MC Nylon



50~75mm
Wheel types other than those listed above are also available. (See Page 17,18)

• Conversion coating with trivalent chrome



Wheel Dia D mm	50	65	75
Load Capacity daN (Rubber wheel)	30	40	50
Over all Height H mm	66	80	90
Bolt Hole Spacing X×Y×Z mm	122×46×38	139×55×42	139×55×42
Bolt Hole Dia P mm	6.5	8.8	8.8

220S



220S-N (50~75mm)

213S
With Stopper



213S-UB (65,75mm)

427S(RD)
Rubber



50mm

425S(R)
Rubber



65,75mm

429G(N)
Nylon



• Conversion coating with trivalent chrome



Wheel Dia D mm	50	65	75
Load Capacity daN (Rubber wheel)	50	50	60
Over all Height H mm	70	85	93
Bolt Hole Spacing X×Y×Z mm	139×55×42	139×55×42	139×55×42
Bolt Hole Dia P mm	8.8	8.8	8.8

429S(NRB)
Nylon



50~75mm

439S(UB)
Polyurethane



428S(PH)
Phenolic



Wheel types other than those listed above are also available. (See Page 17,18)

220E



220E-UR (40~125mm)

215E
With Stopper



215E-PR (65,75,100~150mm)

• For Casters with UR/MC 40mm wheels, the overall height is 57mm.

• Chrome plate finish



Wheel Dia D mm	40	50	65	75	85	100	125	150
Load Capacity daN (Rubber wheel)	20	30	30	40	50	50	60	60
Over all Height H mm	58	66	84	93	103	122	148	176
Bolt Hole Spacing X×Y×Z mm	80×40×20	80×40×20	80×40×20	80×40×20	139×55×42	139×55×42	139×55×42	139×55×42
Bolt Hole Dia P mm	5.2	5.2	5.2	5.2	8.8	8.8	8.8	8.8

425G(R)
Rubber



40mm

429G(N)
Nylon



40,50mm

439G(UR)
Polyurethane



50~150mm

499G(MC)
MC Nylon



50~150mm

425E(R)
Rubber



65,75,100~150mm

430E(PR)
Rubber



65,75,100~150mm

499E(MC)
MC Nylon



65~125mm

429E(N)
Nylon



65~125mm

439E(UR)
Polyurethane



85~125mm

439E(UB)
Polyurethane



85~125mm

Wheel types other than those listed above are also available. (See Page 17,18)

540H



540H-NRB (65,75mm)

540HR



540HR-NRB (65,75mm)

542H(NRB)
Nylon



65,75mm

542H(MCB)
MC Nylon



- Of compact design for low fitting, this model has an ample heavy-load capacity.
- Black zinc plate finish

Non-conformance on RoHS

Wheel Dia D mm	65	75
Load Capacity daN	400	400
Over all Height H mm	90	100
Bolt Hole Spacing X×Y mm	78×78	78×78
Bolt Hole Dia P mm	11	11

560S



560S-NRB (65,75mm)

560SR



560SR-NRB (65,75mm)

562S(NRB)
Nylon



65,75mm

- Of compact design for low fitting, this model has an ample heavy-load capacity.
- Black zinc plate finish

Non-conformance on RoHS

Wheel Dia D mm	65	75
Load Capacity daN	600	600
Over all Height H mm	95	105
Bolt Hole Spacing X×Y mm	78×78	78×78
Bolt Hole Dia P mm	11	11

PLATE TYPE

ALL STAINLESS CASTER



Load Capacity **30daN~60daN**

320E



320E-R (50~125mm)

315E
With Stopper



315E-UR (50~125mm)

320ER



320ER-R (50~125mm)

315ER
With Stopper



315ER-MC (50~75,100,125mm)

429G(N)
Nylon



439G(UR)
Polyurethane



425E(R)
Rubber



499E(MC)
MC Nylon



429E(N)
Nylon



439E(UR)
Polyurethane



439S0E(UB)
Polyurethane



50mm 50~125mm 65,75,100,125mm 65~125mm 85~125mm

Wheel types other than those listed above are also available. (See Page 17,18)

• 320E, 315E, 320ER and 315ER can be used together.

• All stainless steel construction is excellent in corrosion resistance and water resistance.



Wheel Dia D mm	50	65	75	85	100	125
Load Capacity daN (Rubber wheel)	30	30	40	50	50	60
Over all Height H mm	65	82	92	103	122	148
Bolt Hole Spacing X×Y mm	56×28	56×28	56×28	82×40	82×40	82×40
Bolt Hole Dia P mm	6.5	6.5	6.5	8.8	8.8	8.8



Load Capacity **50daN~220daN**

320S



320S-RU (100~150mm)

315S
With Stopper



315S-N (100~150mm)

320SR



320SR-N (100~150mm)

427S(RD)
Rubber



50mm

429S0S(NRB)
Nylon



50~150mm

439S0S(UB)
Polyurethane



315S
With Stopper



315S-N (50~75mm)

425S(R)
Rubber



65,75mm

429G(N)
Nylon



429S(N)
Nylon



50mm 100~150mm

429S0S(N)
Nylon



434S0S(RU)
Rubber



434S0S(RBU)
Rubber



499S0S(MCB)
MC Nylon



Wheel types other than those listed above are also available. (See Page 17,18)

300S



300S-RB 200mm

319S
With Stopper



319S-N 200mm

300SR



300SR-RB 200mm

435S0S(RB)
Rubber



200mm

429S0S(N)
Nylon



300S, 319S, 300SR



• All stainless steel construction is excellent in corrosion resistance and water resistance.

320S, 315S, 320SR

Wheel Dia D mm	200
Load Capacity daN (Rubber wheel)	220
Over all Height H mm	250
Bolt Hole Spacing X×Y mm	300S 100×100 319S 112×63 300SR 112×63
Bolt Hole Dia P mm	13

Wheel Dia D mm	50	65	75	100	125	150
Load Capacity daN (Rubber wheel)	50	50	60	120	150	160
Over all Height H mm	70	85	93	132	168	190
Bolt Hole Spacing X×Y mm	320S,315S 55×42	55×42	55×42	68×68	75×75	75×75
	320SR 55×28	55×28	55×28	80×45	100×56	100×56
Bolt Hole Dia P mm	8.8	8.8	8.8	11	11	11

Corner Plate type



Load Capacity **30daN~60daN**

• All stainless steel construction is excellent in corrosion resistance and water resistance.



220E



220E-R (100,125mm)

215E
With Stopper



215E-N (100,125mm)

Wheel Dia D mm	50	65	75	85	100	125
Load Capacity daN (Rubber wheel)	30	30	40	50	50	60
Over all Height H mm	66	84	93	103	122	148
Bolt Hole Spacing X×Y×Z mm	80×40×20	80×40×20	80×40×20	139×55×42	139×55×42	139×55×42
Bolt Hole Dia P mm	5.2	5.2	5.2	8.8	8.8	8.8

429G(N)
Nylon



50mm

439G(UR)
Polyurethane



425E(R)
Rubber



499E(MC)
MC Nylon



429E(N)
Nylon



439E(UR)
Polyurethane



439S0E(UB)
Polyurethane



50mm 50~125mm 65,75,100,125mm 65~125mm 85~125mm

Wheel types other than those listed above are also available. (See Page 17,18)

• To place an order for the products, please inquire of our sales distributors.

THREADED STEM TYPE



These are the products of RoHS conformance, which do not contain the certain hazardous substances that RoHS directive restricts.



Special offers as the product of RoHS conformance are available. Please inquire of our sales distributors for the order.



Load Capacity

25daN~60daN

420EA



420EA-N (40~125mm)

415EA

With Stopper



415EA-UR (40~125mm)

•420EA and 415EA are of the same type, and can be used together.

- For Casters with UR/MC 40mm wheels, the overall height is 59mm.
- Chrome plate finish



Wheel Dia D mm	40	50	65	75	85	100	125	150
Load Capacity daN (Rubber wheel)	25	30	30	40	50	50	60	60
Over all Height H mm	60	68	85	95	107	126	152	180
Threaded Stem Dia T × Length L mm	M12×1.75×L35				M16×2.0×L40			

425G(R)
Rubber



40mm

429G(N)
Nylon



40,50mm

439G(UR)
Polyurethane



499G(MC)
MC Nylon



425E(R)
Rubber



50~150mm

430E(PR)
Rubber



65,75,100~150mm

499E(MC)
MC Nylon



429E(N)
Nylon



65~125mm

439E(UR)
Polyurethane



439E(UB)
Polyurethane



85~125mm

Wheel types other than those listed above are also available. (See Page 17,18)

920EA



920EA-PR (75~125mm)

915EA

With Total Locking Device



915EA-PR (75~125mm)

921EA



921EA-PR (75,100mm)

916EA

With Total Locking Device



916EA-PR (75,100mm)

- Chrome plate finish



Wheel Dia D mm	75	100	125
Load Capacity daN (Rubber wheel)	40	60	60
Over all Height H mm	114	139	167
Threaded Stem Dia T × Length L mm	M16×2.0×L40		

430S(PR)
Rubber



75mm

434S(FR)
Rubber



100,125mm

430E(PR)
Rubber



100,125mm

434E(FR)
Rubber



100,125mm



Load Capacity

60daN~100daN

420MA



420MA-RB (75~125mm)

415MA

With Total Locking Device



415MA-KUB (75~125mm)

- M12mm and M16mm screw diameters are available.
- 420MA and 415MA can be used together.
- Uni-Chrome plate finish



434MB(RB)
Rubber



75~125mm

434MB(KUB)
Polyurethane



Wheel Dia D mm	75	100	125
Load Capacity daN (Rubber wheel)	60	70	80
Over all Height H mm	106	129	154
Threaded Stem Dia T × Length L mm	M12×1.75×L20 (M16×2.0×L40)		

920MA



920MA-RB (100~150mm)

915MA

With Total Locking Device



915MA-KUB (100~150mm)

- Chrome plate finish



Wheel Dia D mm	100	125	150
Load Capacity daN (Rubber wheel)	100	100	100
Over all Height H mm	138	166	195
Threaded Stem Dia T × Length L mm	M16×2.0×L40		



Load Capacity

50daN~160daN

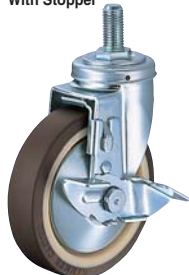
420SA



420SA-R (100~150mm)

413SA

With Stopper



413SA-UB (100~150mm)

413SA

With Stopper



413SA-N (50~75mm)

- 420SA and 413SA can be used together.
- Conversion coating with trivalent chrome



Wheel Dia D mm	50	65	75
Load Capacity daN (Rubber wheel)	50	50	60
Over all Height H mm	74	89	97
Threaded Stem Dia T × Length L mm	M16×2.0×L40		

- 420SA and 413SA can be used together.
- Uni-chrome plate finish



Wheel Dia D mm	100	125	150
Load Capacity daN (Rubber wheel)	120	150	160
Over all Height H mm	138	173	196
Threaded Stem Dia T × Length L mm	M20×2.5×L40		

427S(RD)
Rubber



50mm

429S(NRB)
Nylon



50~75mm

425S(R)
Rubber



65~75mm

429G(N)
Nylon



100~150mm

435S(RB)
Rubber



100~150mm

425S(R)
Rubber



100~150mm

439S(UB)
Polyurethane



100~150mm

429S(NRB)
Nylon



100~150mm

428S(PH)
Phenolic



50~150mm

Wheel types other than those listed above are also available. (See Page 17,18)

PLAIN STEM TYPE



These are the products of RoHS conformance, which do not contain the certain hazardous substances that RoHS directive restricts.

Non-conformance on RoHS

Special offers as the product of RoHS conformance are available. Please inquire of our sales distributors for the order.



Load Capacity

25daN~60daN

420EK



420EK-UR
(40~125mm)

415EK
With Stopper



415EK-MC
(40~75,100~150mm)

420EKR



420EKR-R
(65,75,100,125mm)

- For Casters with UR/MC 40mm wheels, the overall height is 55mm.
- Chrome plate finish



Wheel Dia D mm	40	50	65	75	85	100	125	150
Load Capacity daN (Rubber wheel)	25	30	30	40	50	50	60	60
Over all Height H mm	56	64	81	91	103	122	148	176
Plain Stem Dia T × Length L mm	18×L35				22×L40			

425G(R)
Rubber



40mm

429G(N)
Nylon



40,50mm

425E(R)
Rubber



50~150mm

430E(PR)
Rubber



65,75,100~150mm

429E(N)
Nylon



65~125mm

439E(UR)
Polyurethane



.....

439E(UB)
Polyurethane



85~125mm

Wheel types other than those listed above are also available. (See Page 17,18)

920EK



920EK-PR (75~125mm)

915EK
With Total Locking Device



915EK-PR (75~125mm)

921EK



921EK-PR (75,100mm)

916EK
With Total Locking Device



916EK-PR (75,100mm)

- This caster was specially designed for equipment with tubes, such as beds for medical use, etc.
- Chrome plate finish



Wheel Dia D mm	75	100	125
Load Capacity daN (Rubber wheel)	40	60	60
Over all Height H mm	110	135	163
Plain Stem Dia T × Length L mm	22×L40		

430S(PR)
Rubber



75mm

434S(FR)
Rubber



430E(PR)
Rubber



100,125mm

434E(FR)
Rubber



Load Capacity

60daN~100daN

420MK



420MK-RB (75~125mm)

415MK
With Total Locking Device



415MK-RB (75~125mm)

420MKR



420MKR-KUB (75~125mm)

920MK



920MK-RB (100~150mm)

915MK
With Total Locking Device



915MK-KUB (100~150mm)

434MB(RB) 434MB(KUB)
Rubber Polyurethane



75~125mm

- 420MK, 415MK and 420MKR can be used together.
- Uni-Chrome plate finish

Non-conformance on RoHS

Wheel Dia D mm	75	100	125
Load Capacity daN (Rubber wheel)	60	70	80
Over all Height H mm	102	125	150
Plain Stem Dia T × Length L mm	22×L50		

434M(RB)
Rubber



100~150mm

434M(KUB)
Polyurethane



.....

- Chrome plate finish



Wheel Dia D mm	100	125	150
Load Capacity daN (Rubber wheel)	100	100	100
Over all Height H mm	134	162	191
Plain Stem Dia T × Length L mm	22×L50		



Load Capacity

50daN~160daN

420SK



420SK-R
(100~150mm)

413SK
With Stopper



413SK-WR
(100~150mm)

420SKR



420SKR-URB
(100~150mm)



413SK
With Stopper

413SK-PH
(50~75mm)

- Conversion coating with trivalent chrome



Wheel Dia D mm	50	65	75
Load Capacity daN (Rubber wheel)	50	50	60
Over all Height H mm	70	85	93
Plain Stem Dia T × Length L mm	22×L52		

- Uni-chrome plate finish

Non-conformance on RoHS

Wheel Dia D mm	100	125	150
Load Capacity daN (Rubber wheel)	120	150	160
Over all Height H mm	132	167	189
Plain Stem Dia T × Length L mm	28×L65		

427S(RD)
Rubber



50mm

429S(NRB)
Nylon



50~75mm

425S(R)
Rubber



65,75mm

429G(N)
Nylon



.....

435S(RB)
Rubber



100~150mm

425S(R)
Rubber



.....

439S(UB)
Polyurethane



.....

429S(NRB)
Nylon



.....

428S(PH)
Phenolic



50~150mm

Wheel types other than those listed above are also available. (See Page 17,18)

THREADED STEM TYPE

ALL STAINLESS CASTER



Load Capacity **30daN~160daN**



320EA



320EA-R (50~125mm)

315EA
With Stopper



315EA-N (50~125mm)

•All stainless steel construction is excellent in corrosion resistance and water resistance.

Wheel Dia D mm	50	65	75	85	100	125
Load Capacity daN (Rubber wheel)	30	30	40	50	50	60
Over all Height H mm	68	85	95	107	126	152
Threaded Stem Dia T × Length L mm	M12×1.75×L35			M16×2.0×L40		

429G(N)
Nylon



50mm

439G(UR)
Polyurethane



425E(R)
Rubber



50~125mm

429E(N)
Nylon



65~125mm

439E(UR)
Polyurethane



65~125mm

439S0E(UB)
Polyurethane



85~125mm

Wheel types other than those listed above are also available. (See Page 17,18)

320SA



320SA-N (50~75mm)

315SA
With Stopper



315SA-RU (100~150mm)

315SA
With Stopper



315SA-R (65,75mm)

•All stainless steel construction is excellent in corrosion resistance and water resistance.

Wheel Dia D mm	50	65	75	100	125	150
Load Capacity daN (Rubber wheel)	50	50	60	120	150	160
Over all Height H mm	74	89	97	138	173	196
Threaded Stem Dia T × Length L mm	M16×2.0×L40			M20×2.5×L40		

429S0S(NRB)
Nylon



50~150mm

439S0S(UB)
Polyurethane



65,75mm

425S(R)
Rubber



65,75mm

429G(N)
Nylon



100~150mm

429S0S(N)
Nylon



100~150mm

434S0S(RU)
Rubber



100~150mm

434S0S(RBU)
Rubber



100~150mm

Wheel types other than those listed above are also available. (See Page 17,18)

PLAIN STEM TYPE

ALL STAINLESS CASTER



Load Capacity **30daN~160daN**



320EK



320EK-R (50~125mm)

315EK
With Stopper



315EK-UR (50~125mm)

•All stainless steel construction is excellent in corrosion resistance and water resistance.

Wheel Dia D mm	50	65	75	85	100	125
Load Capacity daN (Rubber wheel)	30	30	40	50	50	60
Over all Height H mm	64	81	91	103	122	148
Plain Stem Dia T × Length L mm	18×L35			22×L40		

429G(N)
Nylon



50mm

439G(UR)
Polyurethane



50~125mm

425E(R)
Rubber



50~125mm

429E(N)
Nylon



65~125mm

439E(UR)
Polyurethane



65~125mm

439S0E(UB)
Polyurethane



85~125mm

Wheel types other than those listed above are also available. (See Page 17,18)

320SK



320SK-N (100~150mm)

315SK
With Stopper



315SK-RU (100~150mm)

315SK
With Stopper



315SK-UB (50~75mm)

•All stainless steel construction is excellent in corrosion resistance and water resistance.

Wheel Dia D mm	50	65	75	100	125	150
Load Capacity daN (Rubber wheel)	50	50	60	120	150	160
Over all Height H mm	70	85	93	132	167	189
Plain Stem Dia T × Length L mm	22×L52			28×L65		

429S0S(NRB)
Nylon



50~150mm

439S0S(UB)
Polyurethane



65,75mm

425S(R)
Rubber



65,75mm

429G(N)
Nylon



100~150mm

429S0S(N)
Nylon



100~150mm

434S0S(RU)
Rubber



100~150mm

434S0S(RBU)
Rubber



100~150mm

Wheel types other than those listed above are also available. (See Page 17,18)

HOSPITAL / SPECIAL USE



These are the products of RoHS conformance, which do not contain the certain hazardous substances that RoHS directive restricts.

Non-conformance on RoHS

Special offers as the product of RoHS conformance are available. Please inquire of our sales distributors for the order.



Load Capacity **100daN**

705A

706A

With Total Locking Device

705K

706K

With Total Locking Device



705A-FA2
(100,125mm)
Light Brown



706A-FA1
(100,125mm)
Gray



705K-FA2
(100,125mm)
Light Brown



706K-FA1
(100,125mm)
Gray

- Most suitable for tubes of indoor equipments used in hotels, hospitals, offices, etc.
- The body is made from resin.

- Threaded stem type

705A, 706A Non-conformance on RoHS

Wheel Dia D mm	100	125
Load Capacity daN	100	100
Over all Height H mm	120	139
Threaded Stem Length Dia T x Lmm	M12X1.75XL25 (M16X2.0XL40)	

- Plain stem type

705K, 706K Non-conformance on RoHS

Wheel Dia D mm	100	125
Load Capacity daN	100	100
Over all Height H mm	114	135
Plain Stem Length Dia T x Lmm	22XL50	

EXPANDER STEM TYPE



Load Capacity **25daN~60daN**

420EU

415EU

With Stopper

420EX

415EX

With Stopper



420 4EU-PR
(65,75,100~150mm)



415 4EU-UR
(40~125mm)



420 5EX-R
(40~150mm)



415 3EX-PR
(65,75,100~150mm)

- Casters designed for exclusive use with tubes, detachable with ease and mountable securely.
- For Casters with UR/MC 40mm wheels, the overall height is 59mm.
- Chrome plate finish



Wheel Dia D mm	40	50	65	75	85	100	125	150
Load Capacity daN (Rubber wheel)	25	30	30	40	50	50	60	60
Over all Height H mm	60	68	85	95	107	126	152	180
Stem Length L mm	EU	53 (50)	53 (50)	53 (50)	53 (52)	53 (52)	53 (52)	53 (52)
	EN	52	52	52	52	52	52	52
Tube Inner Dia T mm	EU	16~18, 19~21, 22~24			18~20, 21~23, 24~26			
	EX	16, 18, 19, 21, 22			19, 21, 22			
	EN	φ 32, φ 38, φ 25, □25, □32,					Pipe thickness : available up to 1.8mm max.	

420EN

415EN

With Stopper

425G(R)

Rubber

429G(N)

Nylon

425E(R)

Rubber



420 2EN-PR
(65,75,100~150mm)



415 2EN-UR
(40~125mm)



40mm



40,50mm



50~150mm



429E(N)
Nylon



439E(UR)
Polyurethane



439E(UB)
Polyurethane



430E(PR)
Rubber



65~125mm



85~125mm



65,75,100~150mm

For round tube

Plug Indication	Tube Outer Dia
φ 32 (1EN)	φ 32
φ 38 (2EN)	φ 38
φ 25 (3EN)	φ 25

For square tube

Plug Indication	Tube Outer Dia
□25 (4EN)	□25
□32 (5EN)	□32

Wheel types other than those listed above are also available. (See Page 17,18)

FOOTHOLD CASTER



Load Capacity **100daN~250daN**

505SA

With Total Locking Device

505SA-R
(100~150mm)



505SK

With Total Locking Device

505SK-R
(100~150mm)



- Designed for use with light-weight foothold, and is complete with a brake.
- Handles for use with SA caster should be ordered separately.
- Uni-chrome plate finish

425S(R)

Rubber



435S(RB)

Rubber



423S(URB)

Polyurethane



100~150mm

Wheel types other than those listed above are also available. (See Page 17,18)

Non-conformance on RoHS

Wheel Dia D mm	100	125	150
Load Capacity daN (Rubber wheel)	100	120	140
Over all Height H mm	132	168	190
Threaded Stem Length L mm	SA	300	300
Threaded Stem Dia T mm	φ 35×4 Screw Thread/1"		
Stem Length L mm	SK		
Stem Dia T mm	100		
	36		

515SA

With Total Locking Device

515SA-RB
(125~200mm)



515SK

With Total Locking Device

515SK-URB
(125~200mm)



- Designed for use with light-weight foothold, and is complete with a brake.
- Handles for use with SA caster should be ordered separately.
- Uni-chrome plate finish

525S(RB)

Rubber



523S(URB)

Polyurethane



435S(RB)

Rubber



125~150mm

200mm

Wheel types other than those listed above are also available. (See Page 17,18)

Non-conformance on RoHS

Wheel Dia D mm	125	150	200
Load Capacity daN (Rubber wheel)	180	230	250
Over all Height H mm	171	196	240
Threaded Stem Length L mm	SA	300	300
Threaded Stem Dia T mm	φ 35×4 Screw Thread/1"		
Stem Length L mm	SK		
Stem Dia T mm	100		
	36		

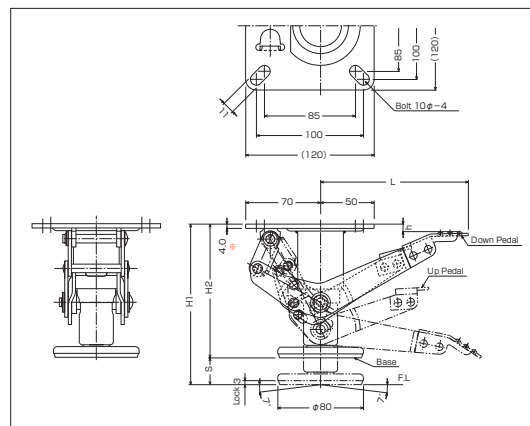
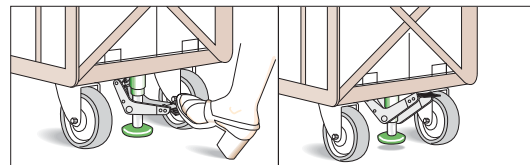
HAMMER LOCK

Hammer Lock has been designed to be held at perfect position and performed simply and safely.

900-2

900-4

Light but strong.
Easy operation.
Outstanding performance.



- Operating instructions (for safe operation)
Press the down pedal to the bottom. Then the base position will be set, with the bogey 5mm from the ground. The up pedal will be above the down pedal; this is the perfect lock position.
- Unlocking (up pedal)
Press the up pedal until it is level with the down pedal and release. The base will be raised to release the lock.

Hammer Lock must be installed at the center of both swivel casters.



Code	Proper mounting height (m/m)	H1	H2	S	Bolt hole spacing (m/m)	L	h	Unit Weight (kg)	Max Loading mass (kg)
		Extended height (m/m)	Re-tracted height (m/m)						
900-2 100	142	150	125	25	85×85 100×100	138	3	1.6	200
900-4 150	202	210	170	40	85×85 100×100	146	10	1.8	300

909LK-42S-100

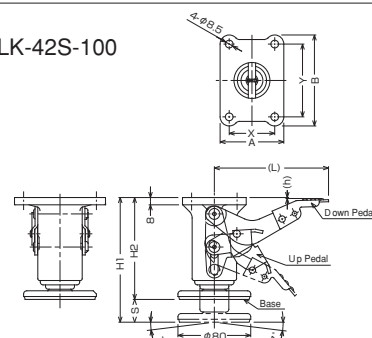
909LK-42S-125

909LK-42S-150

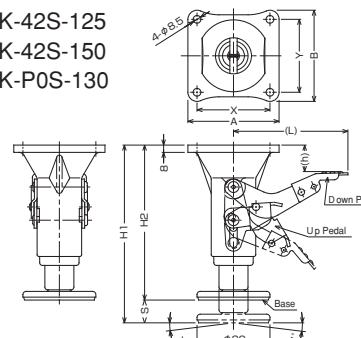
909LK-P0S-130



909LK-42S-100



909LK-42S-125
909LK-42S-150
909LK-P0S-130



Code	Proper mounting height (m/m)	H1	H2	S	Bolt hole spacing (m/m)	L	h	Bolt Hole Dia (m/m)
		Extended height (m/m)	Re-tracted height (m/m)					
909LK-42S	100	132	137	25	50×80	127	1	8.5
	125	168	173					
	150	190	195					
909LK-P0S 130	177	182	157	25	80×80	126	29	8.5

THE "QUIET" CASTER



These are the products of RoHS conformance, which do not contain the certain hazardous substances that RoHS directive restricts.

Non-conformance on RoHS

Special offers as the product of RoHS conformance are available. Please inquire of our sales distributors for the order.

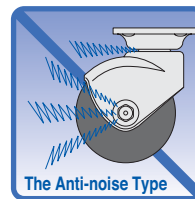


Load Capacity

60daN~120daN

400POS

400PSR



The Anti-noise Type

400POS-FR 100mm E-TYPE

400POS-FR (100,130mm)

400PSR-FR 100mm E-TYPE

400PSR-FR (100,130mm)

• The body is made from resin

Non-conformance on RoHS

Wheel Dia D mm	100	130	100 E-TYPE
Load Capacity daN (Rubber wheel)	80	120	60
Over all Height H mm	144	177	144
Bolt Hole Spacing X×Y mm	71×71 (80×45)	80×80 (100×50)	82×40
Bolt Hole Dia P mm	11	11	8.8

():400PSR



Load Capacity

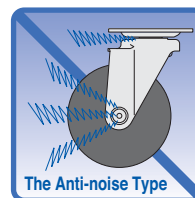
50daN~60daN

420BBS

420BBR

420BBE

420BER



The Anti-noise Type

420BBS-FR (65,75mm)

420BBR-FR (65,75mm)

420BBE-FR (100,125mm)

420BER-FR (100,125mm)

• Conversion coating with trivalent chrome



Wheel Dia D mm	65	75	100	125
Load Capacity daN (Rubber wheel)	50	60	50	60
Over all Height H mm	85	95	122	148
Bolt Hole Spacing X×Y mm	55×42	55×42	82×40	82×40
Bolt Hole Dia P mm	8.8	8.8	8.8	8.8



Load Capacity

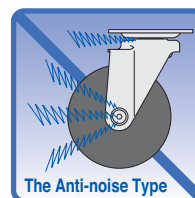
100daN~140daN

420BBS

413BBS
With Stopper

420SR

420SRP



The Anti-noise Type

• Uni-chrome plate finish

Non-conformance on RoHS

Wheel Dia D mm	100	125	150
Load Capacity daN (Rubber wheel)	100	130	140
Over all Height H mm	132	168	190
Bolt Hole Spacing X×Y mm	68×68 (80×45)	75×75 (100×56)	75×75 (100×56)
Bolt Hole Dia P mm	11	11	11

420BBS-FR (100~150mm)

413BBS-FR (100~150mm)

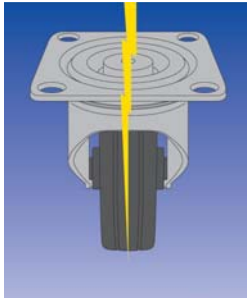
420SR-FR (100~150mm)

420SRP-FR (100~150mm)

():420SR

CONDUCTIVE CASTER

Electrostatic Dissipation through Outstanding Conductivity



- Conductive casters dissipate away the electrical interference to prevent accidents along all manner of working environment.
- The dust-proof property brought by the removal of electricity avoids adhesion of particulates.
- Recommended to apply in super-markets, clean rooms, electronic or medical instruments.
(Conductor: material with volume resistivity value of $10^6 \Omega \cdot \text{cm}$ or less.)

420S

420R

420SA

Electrical resistivity value: $1 \times 10^4 \Omega$ or less.

Non-conformance on RoHS



420S-RB (100~150mm)



420R-N (50~75mm)



420SA-N (50~75mm)

Wheels		Wheel Dia D mm
425S-R	Rubber	65,75
427S-RD	Rubber	50
425E-R	Rubber	50,65,75,85,100,125,150
435S-RB	Rubber(Roller Bearing)	100,125,150,180,200
429G-N	Nylon	50,65,75
429E-N	Nylon	100
429S-NRB	Nylon(Roller Bearing)	100,125,150

- The wheels listed above can be conductive type if requested. Please inquire of our sales distributors for the order.

ANTISTATIC CASTER

Superior Protection against Electrostatic Interference



- Prevents casters from electrification caused by frictions between wheels and floor surfaces.
- The static charge prevention provides casters with excellent dust-proof effect.
- Non-Carbon, No Marking, No Worries.
- Antistatic casters are semi-conducting and accumulate static charges to some extent. while conductive casters hold almost no static charges.
(Semiconductor volume resistivity value: $10^6 - 10^8 \Omega \cdot \text{cm}$.)

420G

413S
With Stopper

420S

Volume resistivity value: $10^7 - 10^{10} \Omega \cdot \text{cm}$.

Non-conformance on RoHS



420G-UR (25~75mm)



413S-UB (100~150mm)



420S-RB (100~150mm)

Wheels		Wheel Dia D mm
439G-UR	Polyurethane	25,32,38,50,65,75
439E-UR	Polyurethane	65,75,85,100,125
439S-UB	Polyurethane(Roller Bearing)	50,65,75
439S-UB	Polyurethane(Roller Bearing)	100,125,150,200
435S-RB	Rubber(Roller Bearing)	100,125,150

- The wheels listed above can be antistatic type if requested. Please inquire of our sales distributors for the order.

CUSHION CASTER

For reduced noise and absorption of shock and vibration due to unevenness of travel surfaces.



Rubber Wheels (with Ball Bearings)

Suited for transport of precision instruments and parts adversely affected by shock or vibration due to travel motion at facilities such as those where semiconductors or medical devices are handled.

940BBE



940BBE-FR 100mm

940ER



940ER-FR 100mm

940BEA



940BEA-FR 100mm

940BBE, 940ER

Wheel Dia D mm	100
Over all Height H mm	143~135
Bolt Hole Spacing X×Y mm	82×40
Bolt Hole Dia P mm	8.8

940BEA

Wheel Dia D mm	100	
Over all Height H mm	148~140	
Threaded Stem Length Dia T × Lmm	FR	M12×1.75×L20
	BLB	UNF1/2×L25

Polyurethane Wheels (with Ball Bearings)

Polyurethane wheels have superior anti-wear performance and tear strength. Conductive polyurethane wheels (electrical resistivity value : $1 \times 10^4 \Omega$ or less) prevent electrostatic hazards and dust adhesion.

935BBE

With Stopper



935BBE-BLB 100mm

935ER

With Stopper



935ER-BLB 100mm

935BEA

With Stopper



935BEA-BLB 100mm

434E(FR)
Rubber

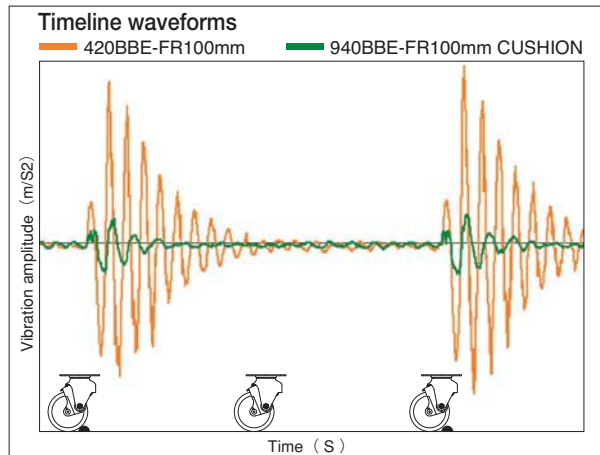
429E(BLB)
Polyurethane

Conductive polyurethane



100mm

Comparison of existing product (420) and cushion caster (940) vibration acceleration



Conical Spring Wire Dia.	Load Capacity
	daN (Rubber wheel)
φ 2.0mm	6
φ 2.3mm	12
φ 2.6mm	18
φ 2.9mm	24
φ 3.2mm	30

Please designate conical springs in accordance with the intended use.
1daN=10N≒1.02kgf (1kgf≒9.8N=0.98daN)

ALL STAINLESS CASTER



•To place an order for the products, please inquire of our sales distributors.

Conical Spring Wire Dia.	Load Capacity
	daN (Rubber wheel)
φ 2.0mm	6
φ 2.3mm	12
φ 2.8mm	18
φ 3.2mm	24

Please designate conical springs in accordance with the intended use.
1daN=10N≒1.02kgf (1kgf≒9.8N=0.98daN)

940BBE



940BBE-FR 100mm

940ER



940ER-FR 100mm

940BEA



940BEA-FR 100mm

940BBE, 940ER

Wheel Dia D mm	100
Over all Height H mm	143~135
Bolt Hole Spacing X×Y mm	82×40
Bolt Hole Dia P mm	8.8

940BEA

Wheel Dia D mm	100	
Over all Height H mm	148~140	
Threaded Stem Length Dia T × Lmm	FR	M12×1.75×L20
	BLB	UNF1/2×L25

935BBE

With Stopper



935BBE-BLB 100mm

935ER

With Stopper



935ER-BLB 100mm

935BEA

With Stopper



935BEA-BLB 100mm

434SOE(FR)
Rubber

429SOE(BLB)
Polyurethane

Conductive polyurethane



100mm

LIGHT-LOAD CASTER



These are the products of RoHS conformance, which do not contain the certain hazardous substances that RoHS directive restricts.

Non-conformance on RoHS

Special offers as the product of RoHS conformance are available. Please inquire of our sales distributors for the order.



Load Capacity **15daN~50daN**



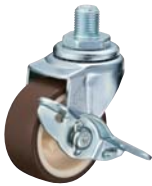
Threaded Stem Casters

420A



420A-N (32~75mm)

415A
With Stopper



415A-UR (40~75mm)

420A



420A-N (32~75mm)

415A
With Stopper



415A-R (40~75mm)
Semi-screw threaded stem

With Socket Casters

420B



420B-R (32~50mm)

415B
With Stopper



415B-N (40,50mm)

420K



420K-UR (40~100mm)

415K
With Stopper



415K-N (40~100mm)

Please order socket separately.



Load Capacity **20daN~25daN**



405P



405P-R (40,50mm)

405 15P
With Stopper



405 15P-N (40,50mm)

405A



405A-UR (40,50mm)

405 15A
With Stopper



405 15A-R (40,50mm)

405B



405B-UR (40,50mm)

405 15B
With Stopper



405 15B-N (40,50mm)

405K



405K-R (40,50mm)

405 15K
With Stopper



405 15K-N (40,50mm)

Please order socket separately.



Load Capacity **20daN~50daN**



450P



450P-UR 50mm

450 15P
With Stopper



450 15P-R 50mm

450A



450A-UR 50mm

450 15A
With Stopper



450 15A-N 50mm

450B



450B-UR 50mm

450 15B
With Stopper



450 15B-N 50mm

450K



450K-UR 50mm

450 15K
With Stopper



450 15K-N 50mm

Please order socket separately.

155



155-R (32~50mm)

•Stem B type comes with socket No,11.

Non-conformance on RoHS

451P



451P-R 50mm

451A



451A-N 50mm

451K



451K-UR 50mm



Load Capacity **40daN**



420SPG



420SPG-BSC (100,125mm)

•The highly sensible caster that allows quick and easy detachability via a single bolt.

Hammer Caster's Replacement Wheels

For the details about wheels, please refer to the composition table at right page.

Rubber Wheels

425G(R) ①
25~40mm



425G(R) ②
50~75mm



425E(R) ①



425E(RN)



437E(NB)



430E(PR)



430E(PR)
With cover



434MB(FHR)
With cover



434MB(RB) ⑤
With cover (Chrome-free steel)



434M(RB) ⑤
With cover (Chrome plated)



425S(R) ①
65/75mm



425S(WR)
Wide type



425S(R) ③
100~150mm



427S(RD) ⑦
50mm



427S(RD) ⑧
100~150mm



437S(NB)
With cover



435S(RB) ⑥



435S(WRB)
Wide type



435S(RBB)



434S(CHR)



434E(FR)
With cover (Polypropylene)



434S(FR)
With cover (Polypropylene)



434S(FR)
100~150mm



445G(R) ④



525S(RB) ⑥
With cover



502BPS(CR)
100~150mm



502BPS(CR)
200mm



435S0S(RB) ⑥
For stainless steel



434S0S(RU)
For stainless steel



434S0S(RBU)
For stainless steel



Nylon Wheels

429G(N) ⑨



429E(N) ⑨



429S(N) ⑨
50mm



429S(N) ⑩
100~150mm



449G(N) ⑨



429S(NRB) ⑫
With cover (100~200mm)



529S(NRB) ⑫
With cover



542H(NRB) ⑫



559P(N2)



429S0S(NRB) ⑪
For stainless steel



Polyurethane Wheels

439G(UR) ⑬
25~50mm



439E(UR) ⑭
85~125mm



439E(UB) ⑮



439S(UB) ⑭
With cover



423S(URB)
With cover (100~200mm)



423S(UBB)



523S(URB)
With cover



542S(BAU)



542S(NRB) ⑫



502BPS(CU)
100~150mm



562S(NRB) ⑫



502BPS(CU)
200mm



559P(BN2)



434MB(FHU)
With cover



429S0S(N) ⑩
For stainless steel



434MB(KUB)
With cover (Chrome-free steel)



434M(KUB)
With cover (Chrome plated)



429E(LB)
With cover (Polypropylene)



429E(BLB)
With cover (Polypropylene)



439S0E(UB) ⑮
For stainless steel



439S0S(UB) ⑮
For stainless steel



MC Nylon Wheels

499G(MC)



499E(MC)



499S(MCB)
With cover



599S(MCB)
With cover

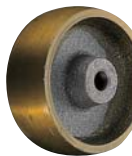


542H(MCB)



Cast Iron Wheels

426G(C) ⑰



426S(C) ⑱



446G(C) ⑱

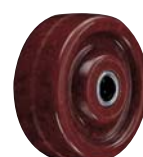


Phenolic Wheels

428S(PH)



428S(PB)



428S0S(PH)
For stainless steel



COMPOSITION TABLE

Every kind of wheel is represented in the wheel column of the dimension table of this catalog by code. Kinds of code are listed below.

Type	Tread	Composition	Type	Tread	Composition
R	Rubber ①	Solid wheel with plain bearing	N	Nylon ⑨	Solid wheel
	Rubber ②	Nylon center		Nylon ⑩	Solid wheel with plastic bush
	Rubber ③	Pressed steel center with plastic bush	NBR	Nylon ⑪	Solid wheel with roller bearing
	Rubber ④	Solid wheel with plastic bush		Nylon ⑫	Solid wheel with ball bearing
RN	Rubber	Nylon center	N2	Nylon	Solid wheel with steel sleeve
NB	Rubber	Solid wheel with roller bearing	BN2	Nylon	Solid wheel with roller bearing
PR	Rubber	Pressed steel center with plastic bush	UR	Polyurethane(TP) ⑬	Nylon center
FHR	Rubber	Nylon center with ball bearing		Polyurethane(TP) ⑭	Nylon center with plain bearing
RB	Rubber ⑤	Nylon center with ball bearing	UB	Polyurethane(TP) ⑮	Nylon center with roller bearing
	Rubber ⑥	Pressed steel center with roller bearing		Polyurethane(TP) ⑯	Nylon center with ball bearing
WR	Rubber(Wide)	Pressed steel center with plastic bush	KUB	Polyurethane(TP)	Nylon center with ball bearing
RD	Rubber ⑦	Solid wheel with plain bearing	URB	Polyurethane(TS)	Pressed steel center with roller bearing
	Rubber ⑧	Solid wheel with plastic bush	BAU	Polyurethane(TS)	Aluminum center with ball bearing
WRB	Rubber(Wide)	Pressed steel center with roller bearing	CU	Polyurethane(TS)	Cast iron center with ball bearing
RBB	Rubber	Pressed steel center with ball bearing	FHU	Polyurethane(TP)	Nylon center with ball bearing
CHR	Rubber	Nylon center with ball bearing	UBB	Polyurethane(TS)	Pressed steel center with ball bearing
FR	Rubber	Nylon center with ball bearing	BLB	Polyurethane(TP)	Nylon center with ball bearing
CR	Rubber	Cast iron center with ball bearing	LB	Elastomer	Polypropylene center with ball bearing
RU	Rubber	Nylon center with stainless steel sleeve	C	Cast iron ⑰	Solid wheel
RBU	Rubber	Nylon center with stainless roller bearing		Cast iron ⑱	Solid wheel with plastic bush
MC	MC Nylon	Solid wheel	PH	Phenolic	Solid wheel with plastic bush
MCB	MC Nylon	Solid wheel with ball bearing	PB	Phenolic	Solid wheel with roller bearing

* TP : Thermoplastic TS : Thermosetting

USES & FEATURES OF WHEEL

● **Rubber wheel**

- Suitable to requirements on cushions through its elasticity and low surface hardness.
- Travel stability throughout indoors to outdoors.

● **Cast iron wheel**

- Heavy in weight but excellent in load bearing, heat and cold resistances.
- Rust-preventive treatment is required.

● **Nylon wheel**

- Light in weight and excellent resistances against heat, chemical, corrosion and wear.

● **Phenolic wheel**

- High in surface hardness and excellent in dry-heat and compression resistance.

● **Polyurethane wheel**

- Suppressive property against fouling to floor surface and the resistances against oil, wear and coldness.
- Wide in range of surface hardness and color tones.

GENERAL PROPERTIES OF WHEEL (TYPE) MATERIAL

Properties	Material	Natural rubber	Butadiene rubber	Nylon	Polyurethane (Thermosetting)	Polyurethane (Thermoplastic)	Phenolic	MC Nylon
Elasticity		◎	◎	×	○	○	×	×
Permanent compression set		○	○	◎	○	○	◎	◎
Wear resistance		○	○	◎	◎	◎	△	◎
Weatherability		△	△	◎	○	○	◎	◎
Oil resistance (Machine oil)		×	×	◎	◎	◎	◎	◎
Gasoline resistance		×	×	◎	◎	◎	◎	◎
Water resistance		○	○	◎	△	△	○	◎
Chemical resistance (weak acid, alkali)		△	△	◎	△	○	◎	◎
Organic solvent resistance		×	×	◎	△	△	◎	◎
Hert resistance (°C)		80	70	70	85	80	180	150
Cold resistance (°C)		-40	-40	-40	-20	-40	-40	-40

(◎→Excellent, ○→Good, △→Fair, ×→Poor) = Change of applicable grease (heat-resistant, cold-resistant) should be made depending upon service temperature and conditions.

(Note)

- The above table shows general properties of material, which should be used as a standard of material selection, since casters undergo various influences such as service conditions, environment, etc.

 **HAMMER CASTER**

