

Drive and hub fitting wheels



Table of Contents

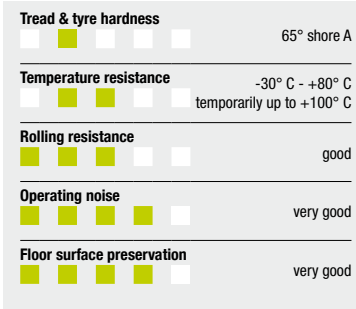
	<p>GEVN/GEVA</p> <p>Series GEVN/GEVA Wheel Ø 160 - 620 mm Load capacity 250 - 3000 kg</p> <p>Page 460, 467</p>
	<p>GSTN/GSTA</p> <p>Series GSTN/GSTA Wheel Ø 75 - 500 mm Load capacity 200 - 4200 kg</p> <p>Page 461, 468</p>
	<p>GTHN</p> <p>Series GTHN Wheel Ø 75 - 1000 mm Load capacity 300 - 25000 kg</p> <p>Page 462/463</p>
	<p>GBN/GBA</p> <p>Serie GBN/GBA Rad-Ø 100 - 1000 mm Tragfähigkeit 350 - 25000 kg</p> <p>Page 464/465, 469</p>
	<p>SPKVSN</p> <p>Series SPKVSN Wheel Ø 200 - 300 mm Load capacity 2500 - 7000 kg</p> <p>Page 466</p>
	<p>PA</p> <p>Series PA Wheel Ø 400 - 536 mm Load capacity 250 - 1300 kg</p> <p>Page 470</p>
	<p>VLEA</p> <p>Series VLEA Wheel Ø 405 - 525 mm Load capacity 950 - 1885 kg</p> <p>Page 471</p>

Series: GEVN

**Heavy duty drive wheels with hub keyway,
with elastic solid rubber tyres,
with cast iron wheel centre**

250 - 3000 kg

RoHS



GEVN-wheel series:

Tyres: Made of superior drive-quality elastic solid rubber, 65° shore A hardness, with steel-band, very high operational comfort, low-noise operation, very good floor preservation, abrasion resistance, colour black.

Wheel Ø 400 and 500 mm: Made of high-quality elastic solid rubber in smooth rolling quality, 65° shore A hardness, steel-wire reinforced, low rolling resistance.

(Material description page 38)

Wheel centre: Made of rugged grey cast iron, plain bore keyed in acc. to DIN 6885, lacquered, colour anthracite.

Other features:

Chemical resistance to many aggressive substances, except oils (table page 36-37).

Operating temperature: -30° C to +80° C, temporarily up to +100° C.

At ambient temperatures above +60° C the load capacity is reduced.

Maintenance-free under standard conditions.

Wheel series overview page 56

Wheels	Wheel Ø (D) [mm]	Tyre width (T2) [mm]	Load cap. at 4 km/h [kg]	Load cap. at 16 km/h [kg]	Axle bore Ø (d) [mm]	Hub groove length (B) [mm]	Hub groove height (H) [mm]	Hub length (T1) [mm]
GEVN 160/25H7	160	50	250	-	25 H7	8 JS9	28.3	60
GEVN 200/25H7	200	50	350	-	25 H7	8 JS9	28.3	60
GEVN 200/30H7	200	50	350	-	30 H7	8 JS9	33.3	60
GEVN 250/30H7	250	60	525	320	30 H7	8 JS9	33.3	60
GEVN 250/40H7	250	60	525	320	40 H7	12 JS9	43.3	60
GEVN 252/40H7	250	80	675	410	40 H7	12 JS9	43.3	80
GEVN 302/35H7	300	90	900	540	35 H7	10 JS9	38.3	90
GEVN 360/35H7	360	60	750	450	35 H7	10 JS9	38.3	60
GEVN 362/40H7	360	75	950	570	40 H7	12 JS9	43.3	75
GEVN 400/40H7	400	75	1000	600	40 H7	12 JS9	43.3	75
GEVN 405/50H7	405	130	1500	900	50 H7	14 JS9	53.8	130
GEVN 415/50H7	415	75	1000	600	50 H7	14 JS9	53.8	75
GEVN 425/60H7	425	150	1800	1100	60 H7	18 JS9	64.4	150
GEVN 500/40H7	500	85	1300	780	40 H7	12 JS9	43.3	90
GEVN 520/50H7	520	100	1525	920	50 H7	14 JS9	53.8	100
GEVN 610/80H7	610	150	2250	1350	80 H7	22 JS9	85.4	150
GEVN 620/80H7	620	200	3000	1800	80 H7	22 JS9	85.4	200

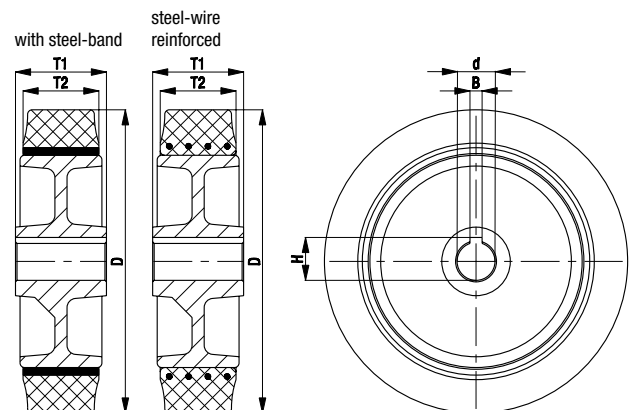
Further dimensions upon request

Options



With steel-band tyre in friction wheel quality

Technical description page	38
Product code suffix	-STR
Available for	upon request



Series: GSTN

Heavy duty drive wheels with hub keyway, with Blickle Softhane® polyurethane tread, with cast iron wheel centre

200 - 4200 kg

RoHS



Tread & tyre hardness	75° shore A
Temperature resistance	-30° C - +70° C temporarily up to +90° C
Rolling resistance	very good
Operating noise	very good
Floor surface preservation	very good



GSTN-wheel series:

Tread: Made of high-quality, reaction-injected polyurethane-elastomer Blickle Softhane®, 75° shore A hardness, very high operational comfort due to an extremely thick, elastic tread, low-noise operation, low rolling resistance, very good floor preservation, high abrasion resistance, high cut and tear propagation resistance, colour green, non-marking, non-staining, very good chemical connection with the wheel centre. (Material description page 39)

Wheel centre: Made of rugged grey cast iron, plain bore keyed in acc. to DIN 6885, lacquered, colour silver.

Other features:

High chemical resistance to many aggressive substances (table page 36-37).

Operating temperature: -30° C to +70° C, temporarily up to +90° C.

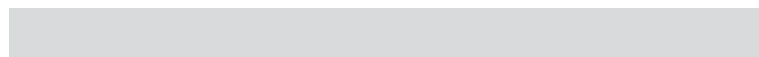
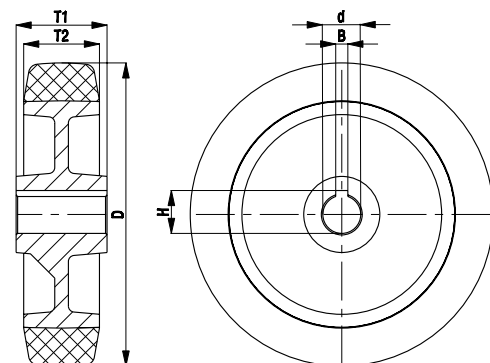
At ambient temperatures above +40° C the load capacity is reduced.

Maintenance-free under standard conditions.

Wheel series overview page 56

Wheels	Wheel Ø (D) [mm]	Wheel width (T2) [mm]	Load capacity [kg]	Axle bore Ø (d) [mm]	Hub groove length (B) [mm]	Hub groove height (H) [mm]	Hub length (T1) [mm]
GSTN 75/20H7	75	40	200	20 H7	6 JS9	22.8	40
GSTN 100/20H7	100	40	250	20 H7	6 JS9	22.8	40
GSTN 100/25H7	100	40	250	25 H7	8 JS9	28.3	40
GSTN 127/25H7	125	50	400	25 H7	8 JS9	28.3	60
GSTN 150/25H7	150	50	500	25 H7	8 JS9	28.3	60
GSTN 150/30H7	150	50	500	30 H7	8 JS9	33.3	60
GSTN 160/25H7	160	50	550	25 H7	8 JS9	28.3	60
GSTN 160/30H7	160	50	550	30 H7	8 JS9	33.3	60
GSTN 200/25H7	200	50	700	25 H7	8 JS9	28.3	60
GSTN 200/30H7	200	50	700	30 H7	8 JS9	33.3	60
GSTN 202/35H7	200	80	1000	35 H7	10 JS9	38.3	80
GSTN 251/30H7	250	50	700	30 H7	8 JS9	33.3	60
GSTN 252/40H7	250	80	1100	40 H7	12 JS9	43.3	80
GSTN 302/40H7	300	80	1600	40 H7	12 JS9	43.3	80
GSTN 304/50H7	300	100	2100	50 H7	14 JS9	53.8	100
GSTN 362/50H7	360	75	1700	50 H7	14 JS9	53.8	75
GSTN 402/50H7	400	80	2100	50 H7	14 JS9	53.8	80
GSTN 502/70H7	500	125	4200	70 H7	20 JS9	74.9	125

Further dimensions upon request



Series: GTHN, wheel Ø 75 - 200 mm

Heavy duty drive wheels with hub keyway, with Blickle Extrathane® polyurethane tread, with cast iron wheel centre

300 - 1400 kg

✓RoHS



Tread & tyre hardness	92° shore A
Temperature resistance	-30° C - +70° C temporarily up to +90° C
Rolling resistance	very good
Operating noise	good
Floor surface preservation	good



GTHN-wheel series:

Tread: Made of high-quality, reaction-injected polyurethane-elastomer Blickle Extrathane®, 92° shore A hardness, low-noise operation, low rolling resistance, good floor preservation, high abrasion resistance, high cut and tear propagation resistance, colour light brown, non-marking, non-staining, very good chemical connection with the wheel centre.

(Material description page 39)

Wheel centre: Made of rugged grey cast iron, plain bore keywayed in acc. to DIN 6885, lacquered, colour silver.

Other features:

High chemical resistance to many aggressive substances (table page 36-37).

Operating temperature: -30° C to +70° C, temporarily up to +90° C.

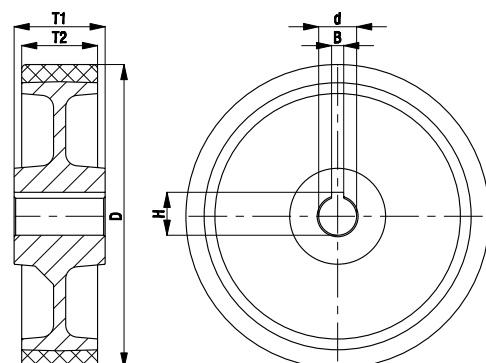
At ambient temperatures above +40° C the load capacity is reduced.

Maintenance-free under standard conditions.

Wheel series overview page 57

Wheels	Wheel Ø (D) [mm]	Wheel width (T2) [mm]	Load capacity [kg]	Axle bore Ø (d) [mm]	Hub groove length (B) [mm]	Hub groove height (H) [mm]	Hub length (T1) [mm]
GTHN 75/20H7	75	40	300	20 H7	6 JS9	22.8	40
GTHN 100/20H7	100	40	350	20 H7	6 JS9	22.8	40
GTHN 100/25H7	100	40	350	25 H7	8 JS9	28.3	40
GTHN 125/20H7	125	40	400	20 H7	6 JS9	22.8	40
GTHN 125/25H7	125	40	400	25 H7	8 JS9	28.3	40
GTHN 127/25H7	125	50	550	25 H7	8 JS9	28.3	60
GTHN 127/30H7	125	50	550	30 H7	8 JS9	33.3	60
GTHN 140/25H7	140	50	600	25 H7	8 JS9	28.3	60
GTHN 140/30H7	140	50	600	30 H7	8 JS9	33.3	60
GTHN 150/25H7	150	50	650	25 H7	8 JS9	28.3	60
GTHN 150/30H7	150	50	650	30 H7	8 JS9	33.3	60
GTHN 150/35H7	150	50	650	35 H7	10 JS9	38.3	60
GTHN 160/25H7	160	50	700	25 H7	8 JS9	28.3	60
GTHN 160/30H7	160	50	700	30 H7	8 JS9	33.3	60
GTHN 180/25H7	180	50	800	25 H7	8 JS9	28.3	60
GTHN 180/30H7	180	50	800	30 H7	8 JS9	33.3	60
GTHN 180/35H7	180	50	800	35 H7	10 JS9	38.3	60
GTHN 200/25H7	200	50	900	25 H7	8 JS9	28.3	60
GTHN 200/30H7	200	50	900	30 H7	8 JS9	33.3	60
GTHN 200/35H7	200	50	900	35 H7	10 JS9	38.3	60
GTHN 200/40H7	200	50	900	40 H7	12 JS9	43.3	60
GTHN 202/35H7	200	80	1400	35 H7	10 JS9	38.3	80
GTHN 202/40H7	200	80	1400	40 H7	12 JS9	43.3	80
GTHN 202/50H7	200	80	1400	50 H7	14 JS9	53.8	80

For further wheel Ø refer to the next page



Series: GTHN, wheel Ø 250 - 1000 mm

Heavy duty drive wheels with hub keyway, with Blickle Extrathane® polyurethane tread, with cast iron wheel centre

1100 - 25000 kg RoHS



Tread & tyre hardness
 92° shore A

Temperature resistance
 -30° C - +70° C temporarily up to +90° C

Rolling resistance
 very good

Operating noise
 good

Floor surface preservation
 good



GTHN-wheel series:

Tread: Made of high-quality, reaction-injected polyurethane-elastomer Blickle Extrathane®, 92° shore A hardness, low-noise operation, low rolling resistance, good floor preservation, high abrasion resistance, high cut and tear propagation resistance, colour light brown, non-marking, non-staining, very good chemical connection with the wheel centre.

(Material description page 39)

Wheel centre: Made of rugged grey cast iron, plain bore keywayed in acc. to DIN 6885, lacquered, colour silver.

Other features:

High chemical resistance to many aggressive substances (table page 36-37).

Operating temperature: -30° C to +70° C, temporarily up to +90° C.

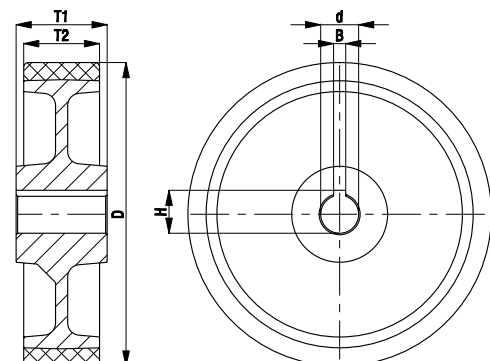
At ambient temperatures above +40° C the load capacity is reduced.

Maintenance-free under standard conditions.

Wheel series overview page 57

Wheels	Wheel Ø (D) [mm]	Wheel width (T2) [mm]	Load capacity [kg]	Axle bore Ø (d) [mm]	Hub groove length (B) [mm]	Hub groove height (H) [mm]	Hub length (T1) [mm]
GTHN 251/30H7	250	50	1100	30 H7	8 JS9	33.3	60
GTHN 251/40H7	250	50	1100	40 H7	12 JS9	43.3	60
GTHN 252/40H7	250	80	1600	40 H7	12 JS9	43.3	80
GTHN 252/50H7	250	80	1600	50 H7	14 JS9	53.8	80
GTHN 253/40H7	250	100	2200	40 H7	12 JS9	43.3	100
GTHN 253/50H7	250	100	2200	50 H7	14 JS9	53.8	100
GTHN 300/40H7	300	60	1500	40 H7	12 JS9	43.3	60
GTHN 300/50H7	300	60	1500	50 H7	14 JS9	53.8	60
GTHN 302/40H7	300	80	2100	40 H7	12 JS9	43.3	80
GTHN 302/50H7	300	80	2100	50 H7	14 JS9	53.8	80
GTHN 304/40H7	300	100	2700	40 H7	12 JS9	43.3	100
GTHN 304/50H7	300	100	2700	50 H7	14 JS9	53.8	100
GTHN 304/60H7	300	100	2700	60 H7	18 JS9	64.4	100
GTHN 362/40H7	360	75	2200	40 H7	12 JS9	43.3	75
GTHN 362/50H7	360	75	2200	50 H7	14 JS9	53.8	75
GTHN 362/60H7	360	75	2200	60 H7	18 JS9	64.4	75
GTHN 402/50H7	400	80	2800	50 H7	14 JS9	53.8	80
GTHN 402/60H7	400	80	2800	60 H7	18 JS9	64.4	80
GTHN 404/60H7	400	100	3400	60 H7	18 JS9	64.4	100
GTHN 404/70H7	400	100	3400	70 H7	20 JS9	74.9	100
GTHN 406/70H7	400	125	4500	70 H7	20 JS9	74.9	125
GTHN 406/80H7	400	125	4500	80 H7	22 JS9	85.4	125
GTHN 500/80H7	500	100	4500	80 H7	22 JS9	85.4	100
GTHN 504/100H7	500	150	6700	100 H7	28 JS9	106.4	150
GTHN 506/120H7	500	200	9000	120 H7	32 JS9	127.4	200
GTHN 602/120H7	600	150	8000	120 H7	32 JS9	127.4	150
GTHN 604/120H7	600	200	10000	120 H7	32 JS9	127.4	200
GTHN 750/150H7	750	200	12500	150 H7	36 JS9	158.4	200
GTHN 1000/250H7	1000	300	25000	250 H7	56 JS9	262.4	300

Further dimensions upon request



Series: GBN, wheel Ø 100 - 250 mm

Heavy duty drive wheels with hub keyway, with Blickle Besthane® polyurethane tread, with cast iron wheel centre

350 - 2200 kg

RoHS



Tread & tyre hardness	92° shore A
Temperature resistance	-30° C - +70° C temporarily up to +90° C
Rolling resistance	excellent
Operating noise	good
Floor surface preservation	good



GBN-wheel series:

Tread: Made of high-quality, reaction-injected polyurethane-elastomer Blickle Besthane®, 92° shore A hardness, low-noise operation, very low rolling resistance, **high dynamic load capacity**, good floor preservation, high abrasion resistance, high cut and tear propagation resistance, colour brown, non-marking, non-staining, very good chemical connection with the wheel centre.

(Material description page 39)

Wheel centre: Made of rugged grey cast iron, plain bore keyed in acc. to DIN 6885, lacquered, colour silver.

Other features:

High chemical resistance to many aggressive substances (table page 36-37).

Operating temperature: -30° C to +70° C, temporarily up to +90° C.

At ambient temperatures above +40° C the load capacity is reduced.

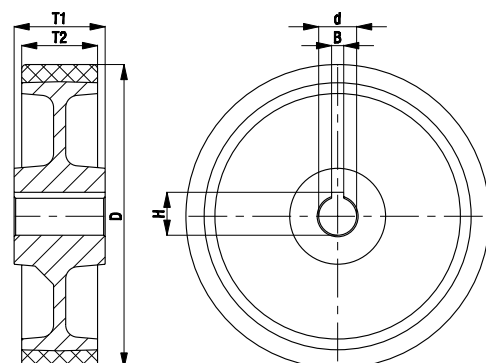
Maintenance-free under standard conditions.

Wheel series overview page 57

Wheels	Wheel Ø (D) [mm]	Wheel width (T2) [mm]	Load cap. at 4 km/h [kg]	Load cap. at 10 km/h* [kg]	Load cap. at 16 km/h* [kg]	Axle bore Ø (d) [mm]	Hub groove length (B) [mm]	Hub groove height (H) [mm]	Hub length (T1) [mm]
GBN 100/20H7	100	40	350	200	-	20 H7	6 JS9	22.8	40
GBN 100/25H7	100	40	350	200	-	25 H7	8 JS9	28.3	40
GBN 101/25H7	100	50	450	300	-	25 H7	8 JS9	28.3	60
GBN 127/25H7	125	50	550	350	-	25 H7	8 JS9	28.3	60
GBN 127/30H7	125	50	550	350	-	30 H7	8 JS9	33.3	60
GBN 150/25H7	150	50	650	425	-	25 H7	8 JS9	28.3	60
GBN 150/30H7	150	50	650	425	-	30 H7	8 JS9	33.3	60
GBN 150/35H7	150	50	650	425	-	35 H7	10 JS9	38.3	60
GBN 160/25H7	160	50	700	450	-	25 H7	8 JS9	28.3	60
GBN 160/30H7	160	50	700	450	-	30 H7	8 JS9	33.3	60
GBN 200/25H7	200	50	900	600	350	25 H7	8 JS9	28.3	60
GBN 200/30H7	200	50	900	600	350	30 H7	8 JS9	33.3	60
GBN 200/35H7	200	50	900	600	350	35 H7	10 JS9	38.3	60
GBN 200/40H7	200	50	900	600	350	40 H7	12 JS9	43.3	60
GBN 202/35H7	200	80	1400	900	500	35 H7	10 JS9	38.3	80
GBN 202/40H7	200	80	1400	900	500	40 H7	12 JS9	43.3	80
GBN 202/50H7	200	80	1400	900	500	50 H7	14 JS9	53.8	80
GBN 252/40H7	250	80	1600	1200	650	40 H7	12 JS9	43.3	80
GBN 252/50H7	250	80	1600	1200	650	50 H7	14 JS9	53.8	80
GBN 253/40H7	250	100	2200	1500	800	40 H7	12 JS9	43.3	100
GBN 253/50H7	250	100	2200	1500	800	50 H7	14 JS9	53.8	100

* Considerably higher load capacities are possible for applications without obstacles

For further wheel Ø refer to the next page



Series: GBN, wheel Ø 300 - 1000 mm

Heavy duty drive wheels with hub keyway, with Blickle Besthane® polyurethane tread, with cast iron wheel centre

2100 - 25000 kg RoHS



Tread & tyre hardness	92° shore A
Temperature resistance	-30° C - +70° C temporarily up to +90° C
Rolling resistance	excellent
Operating noise	good
Floor surface preservation	good



GBN-wheel series:

Tread: Made of high-quality, reaction-injected polyurethane-elastomer Blickle Besthane®, 92° shore A hardness, low-noise operation, very low rolling resistance, **high dynamic load capacity**, good floor preservation, high abrasion resistance, high cut and tear propagation resistance, colour brown, non-marking, non-staining, very good chemical connection with the wheel centre.

Wheel centre: Made of rugged grey cast iron, plain bore keyed in acc. to DIN 6885, lacquered, colour silver.

Other features:

High chemical resistance to many aggressive substances (table page 36-37).

Operating temperature: -30° C to +70° C, temporarily up to +90° C.

At ambient temperatures above +40° C the load capacity is reduced.

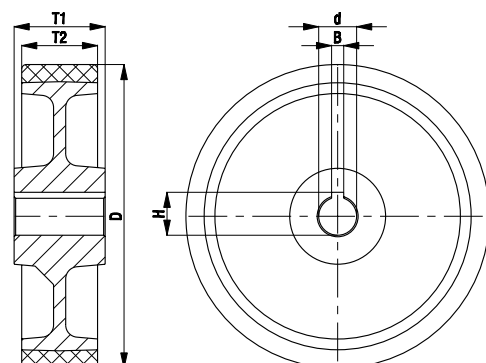
Maintenance-free under standard conditions.

Wheel series overview page 57

Wheels	Wheel Ø (D) [mm]	Wheel width (T2) [mm]	Load cap. at 4 km/h [kg]	Load cap. at 10 km/h* [kg]	Load cap. at 16 km/h* [kg]	Axle bore Ø (d) [mm]	Hub groove length (B) [mm]	Hub groove height (H) [mm]	Hub length (T1) [mm]
GBN 302/40H7	300	80	2100	1400	750	40 H7	12 JS9	43.3	80
GBN 302/50H7	300	80	2100	1400	750	50 H7	14 JS9	53.8	80
GBN 304/40H7	300	100	2700	1800	1000	40 H7	12 JS9	43.3	100
GBN 304/50H7	300	100	2700	1800	1000	50 H7	14 JS9	53.8	100
GBN 304/60H7	300	100	2700	1800	1000	60 H7	18 JS9	64.4	100
GBN 362/40H7	360	75	2200	1500	800	40 H7	12 JS9	43.3	75
GBN 362/50H7	360	75	2200	1500	800	50 H7	14 JS9	53.8	75
GBN 362/60H7	360	75	2200	1500	800	60 H7	18 JS9	64.4	75
GBN 363/70H7	360	100	3200	2200	1200	70 H7	20 JS9	74.9	100
GBN 404/60H7	400	100	3400	2500	1300	60 H7	18 JS9	64.4	100
GBN 404/70H7	400	100	3400	2500	1300	70 H7	20 JS9	74.9	100
GBN 406/70H7	400	125	4500	3000	1600	70 H7	20 JS9	74.9	125
GBN 406/80H7	400	125	4500	3000	1600	80 H7	22 JS9	85.4	125
GBN 408/80H7	400	150	5100	3700	2000	80 H7	22 JS9	85.4	150
GBN 500/80H7	500	100	4500	3000	1600	80 H7	22 JS9	85.4	100
GBN 504/100H7	500	150	6700	4500	2500	100 H7	28 JS9	106.4	150
GBN 506/120H7	500	200	9000	6200	3300	120 H7	32 JS9	127.4	200
GBN 602/120H7	600	150	8000	5500	3000	120 H7	32 JS9	127.4	150
GBN 604/120H7	600	200	10000	7000	3700	120 H7	32 JS9	127.4	200
GBN 750/150H7	750	200	12500	8700	4500	150 H7	36 JS9	158.4	200
GBN 1000/250H7	1000	300	25000	17000	9000	250 H7	56 JS9	262.4	300

* Considerably higher load capacities are possible for applications without obstacles

Further dimensions upon request



Series: SPKVSN

Solid steel flanged drive wheels with hub keyway

2500 - 7000 kg

RoHS



Tread & tyre hardness	190 - 230 HB
Temperature resistance	-30° C - +300° C
Rolling resistance	excellent
Operating noise	sufficient
Floor surface preservation	sufficient

SPKVSN-wheel series:

Made of mild steel, with lightly oiled surface, with horizontal taper of 3°, plain bore keywayed in acc. to DIN 6885, exceptionally low rolling resistance, outstanding wear resistance, extremely high static and dynamic load capacity.

(Material description page 40)

Other features:

For chemical resistance refer to material description page 40.

Operating temperature: -30° C to +300° C, load capacity reduction of 50 % at +300° C.

The load capacities indicated in the table refer to the following rail profiles in acc. to DIN 536 (crane rail standard):

SPKVSN 200: A 45

SPKVSN 250: A 55

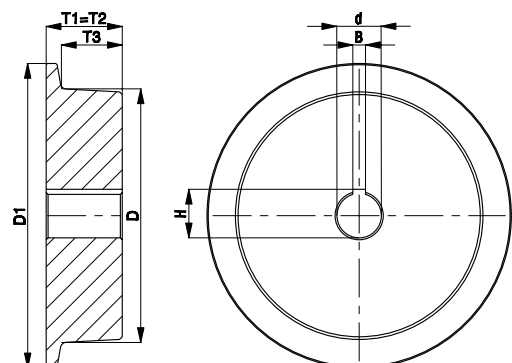
SPKVSN 300: A 65.

Maintenance-free under standard conditions.

Wheel series overview page 57

Wheels	Wheel Ø w/o flange (D) [mm]	Wheel Ø incl. flange (D1) [mm]	Wheel width (T2) [mm]	Tread width (T3) [mm]	Load capacity [kg]	Axle bore Ø (d) [mm]	Hub groove length (B) [mm]	Hub groove height (H) [mm]	Hub length (T1) [mm]
SPKVSN 200/40H7	200	240	60	48	2500	40 H7	12 JS9	43.3	60
SPKVSN 250/50H7	250	290	75	60	4000	50 H7	14 JS9	53.8	75
SPKVSN 300/60H7	300	345	90	72	7000	60 H7	18 JS9	64.4	90

Further dimensions upon request



Series: GEVA

Heavy duty hub fitting wheels with elastic solid rubber tyres, with cast iron wheel centre

525 - 3000 kg

RoHS



Tread & tyre hardness	65° shore A
Temperature resistance	-30° C - +80° C temporarily up to +100° C
Rolling resistance	very good
Operating noise	very good
Floor surface preservation	very good

GEVA-wheel series:

Tyres: Made of high-quality elastic solid rubber in smooth rolling quality, 65° shore A hardness, steel-wire reinforced, very high operational comfort, low-noise operation, low rolling resistance, very good floor preservation, colour black. (Material description page 38)

Wheel centre: Made of rugged grey cast iron, centre piece with a central hole and fixing holes. Fixing holes are counter-sunk. Lacquered, colour silver.

Other features:

Chemical resistance to many aggressive substances, except oils (table page 36-37). Operating temperature: -30° C to +80° C, temporarily up to +100° C.

At ambient temperatures above +60° C the load capacity is reduced.

Maintenance-free under standard conditions.

Wheel series overview page 57

Wheels	Wheel Ø (D) [mm]	Tyre width (T2) [mm]	Load cap. at 4 km/h [kg]	Load cap. at 16 km/h [kg]	No. of fixing holes	Fixing hole Ø (d2) [mm]	Central hole Ø (d) [mm]	PCD (d1) [mm]
GEVA 250/4	250	60	525	320	4	16.5	60	100
GEVA 252/4	250	80	675	410	4	16.5	60	100
GEVA 300/4	300	75	750	450	4	16.5	60	100
GEVA 300/5	300	75	750	450	5	16.5	67	112
GEVA 302/4	300	90	900	540	4	16.5	60	100
GEVA 302/5	300	90	900	540	5	16.5	67	112
GEVA 360/4	360	60	750	450	4	16.5	60	100
GEVA 360/5	360	60	750	450	5	16.5	67	112
GEVA 400/4	400	65	900	540	4	16.5	60	100
GEVA 400/5-67	400	65	900	540	5	16.5	67	112
GEVA 400/5-82	400	65	900	540	5	16.5	82	130
GEVA 402/4	400	75	1000	600	4	16.5	60	100
GEVA 402/5-67	400	75	1000	600	5	16.5	67	112
GEVA 402/5-82	400	75	1000	600	5	16.5	82	130
GEVA 405/5	405	130	1500	900	5	18.5	110	145
GEVA 405/6	405	130	1500	900	6	21.5	160	205
GEVA 415/6	415	90	1150	690	6	21.5	160	205
GEVA 500/6	500	85	1300	780	6	21.5	160	205
GEVA 520/6	520	100	1525	920	6	21.5	160	205
GEVA 620/6	620	200	3000	1800	6	21.5	160	205

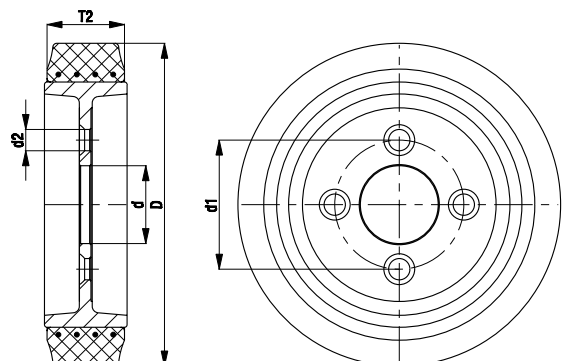
Further dimensions upon request

Options



With steel-band tyre in drive-quality

Technical description page	38
Product code suffix	-STA
Available for	upon request



Series: GSTA

Heavy duty hub fitting wheels with Blickle Softhane® polyurethane tread, with cast iron wheel centre

700 - 2500 kg

✓RoHS



Tread & tyre hardness	75° shore A
Temperature resistance	-30° C - +70° C temporarily up to +90° C
Rolling resistance	very good
Operating noise	very good
Floor surface preservation	very good



GSTA-wheel series:

Tread: Made of high-quality, reaction-injected polyurethane-elastomer Blickle Softhane®, 75° shore A hardness, very high operational comfort due to an extremely thick, elastic tread, low-noise operation, low rolling resistance, very good floor preservation, high abrasion resistance, high cut and tear propagation resistance, colour green, non-marking, non-staining, very good chemical connection with the wheel centre. (Material description page 39)

Wheel centre: Made of rugged grey cast iron, centre piece with a central hole and fixing holes. Fixing holes are counter-sunk. Lacquered, colour silver.

Other features:

High chemical resistance to many aggressive substances (table page 36-37).

Operating temperature: -30° C to +70° C, temporarily up to +90° C.

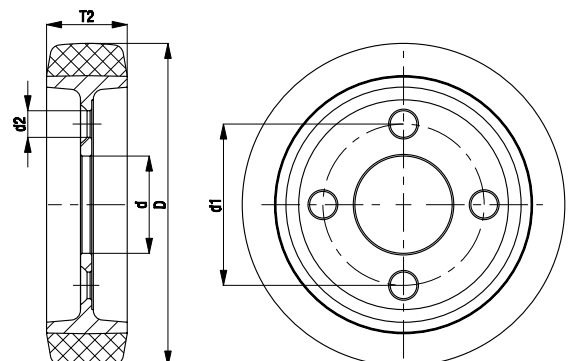
At ambient temperatures above +40° C the load capacity is reduced.

Maintenance-free under standard conditions.

Wheel series overview page 58

Wheels	Wheel Ø (D) [mm]	Wheel width (T2) [mm]	Load capacity [kg]	No. of fixing holes	Fixing hole Ø (d2) [mm]	Central hole Ø (d) [mm]	PCD (d1) [mm]
GSTA 200/4	200	50	700	4	16.5	60	100
GSTA 250/4	250	60	800	4	16.5	60	100
GSTA 252/4	250	80	1100	4	16.5	60	100
GSTA 302/5	300	80	1600	5	16.5	67	112
GSTA 404/6	400	100	2500	6	21.5	160	205

Further dimensions upon request



Series: GBA

Heavy duty hub fitting wheels with Blickle Besthane® polyurethane tread, with cast iron wheel centre

900 - 3400 kg

✓RoHS



Tread & tyre hardness	92° shore A
Temperature resistance	-30° C - +70° C temporarily up to +90° C
Rolling resistance	excellent
Operating noise	good
Floor surface preservation	good



GBA-wheel series:

Tread: Made of high-quality, reaction-injected polyurethane-elastomer Blickle Besthane®, 92° shore A hardness, low-noise operation, very low rolling resistance, **high dynamic load capacity**, good floor preservation, high abrasion resistance, high cut and tear propagation resistance, colour brown, non-marking, non-staining, very good chemical connection with the wheel centre.

(Material description page 39)

Wheel centre: Made of rugged grey cast iron, centre piece with a central hole and fixing holes. Fixing holes are counter-sunk. Lacquered, colour silver.

Other features:

High chemical resistance to many aggressive substances (table page 36-37).

Operating temperature: -30° C to +70° C, temporarily up to +90° C.

At ambient temperatures above +40° C the load capacity is reduced.

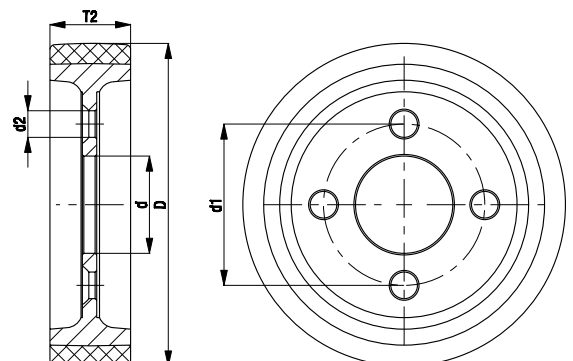
Maintenance-free under standard conditions.

Wheel series overview page 58

Wheels	Wheel Ø (D) [mm]	Wheel width (T2) [mm]	Load cap. at 4 km/h [kg]	Load cap. at 10 km/h* [kg]	Load cap. at 16 km/h* [kg]	No. of fixing holes	Fixing hole Ø (d2) [mm]	Central hole Ø (d) [mm]	PCD (d1) [mm]
GBA 200/4	200	50	900	600	350	4	16.5	60	100
GBA 250/4	250	60	1300	900	500	4	16.5	60	100
GBA 252/5	250	80	1600	1200	650	5	16.5	67	112
GBA 302/5	300	90	2100	1400	750	5	16.5	67	112
GBA 404/6	400	100	3400	2500	1300	6	21.5	160	205

* Considerably higher load capacities are possible for applications without obstacles

Further dimensions upon request



Series: PA

Hub fitting wheels with pneumatic tyres, with pressed steel rim

250 - 1300 kg

RoHS



Wheel Ø 400-415 mm
Drop based rim

Wheel Ø 420-536 mm
Flat based rim

Tread & tyre hardness	60° shore A
Temperature resistance	-30° C - +50° C
Rolling resistance	good
Operating noise	excellent
Floor surface preservation	excellent

PA-wheel series:

Tyres: Pneumatic tyres with ribbed or zig-zag profile, 2 to 10 ply rating, with tube, highest operational comfort, excellent floor preservation, colour black, PAH conform in acc. to EU-directive 2005/69/EC. (Material description page 38)

Rims: Made of pressed steel, bolted or welded, centre piece with a central hole and fixing holes. Fixing holes are counter-sunk. Lacquered, colour silver.

Wheel Ø 420 mm or larger: Zinc-plated, blue-passivated, Cr6-free.

Other features:

Chemical resistance to many aggressive substances, except oils (table page 36-37). Operating temperature: -30° C to +50° C.

Wheel and tyre dimensions are valid for unloaded, new tyres and may slightly change in width and diameter during operation.

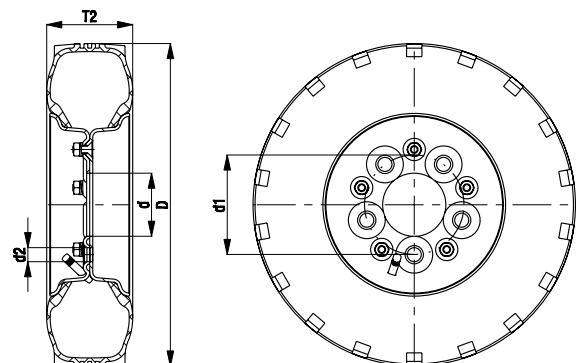
Wheel series overview page 58

With a reduced load capacity, max. speeds of up to 25 km/h are permissible.

Wheels	Wheel Ø (D) [mm]	Tyre width (T2) [mm]	Tyre dimension	Ply rating	Load cap. at 4 km/h [kg]	Load cap. at 25 km/h [kg]	Tyre pressure [bar/psi]	No. of fixing holes	Fixing hole Ø (d2) [mm]	Central hole Ø (d) [mm]	PCD (d1) [mm]	Profile *
PA 402/4	400	100	4.00-8	2	250	100	2.0/30	4	14.5	60	100	B07
PA 412/4	400	100	4.00-8	4	350	160	3.5/50	4	14.5	60	100	B07
PA 420/4	415	115	4.00-8	4	525	300	3.5/50	4	14.5	60	100	R02
PA 430/5	420	115	4.00-8	6	650	500	7.0/101	5	16.5	82	130	B08
PA 432/5	420	115	4.00-8	8	750	600	7.0/101	5	16.5	82	130	B08
PA 464/5	460	145	5.00-8	8	1140	770	7.0/101	5	16.5	82	130	B08
PA 536/5	536	165	6.00-9	10	1300	1050	7.0/101	5	16.5	110	145	B08

* R = Ribbed profile, B = Zig-zag profile, refer to image on page 198

Further fitting dimensions upon request



Series: VLEA

Heavy duty hub fitting wheels with super-elastic solid rubber tyres, with pressed steel rim

950 - 1885 kg

RoHS



Tread & tyre hardness	70° shore A
Temperature resistance	-30° C - +80° C temporarily up to +100° C
Rolling resistance	good
Operating noise	very good
Floor surface preservation	very good

VLEA-wheel series:

Tyres: Made of super-elastic solid rubber, 3-component tyre, tough and hard rubber core, steel-wire reinforced, super-elastic cushion layer and abrasion-resistant tread, very high operational comfort, very good floor preservation, colour black.

Rims: Made of heavy pressed steel, bolted, centre piece with a central hole and fixing holes. Fixing holes are counter-sunk. Zinc-plated, blue-passivated, Cr6-free.

Other features:

Chemical resistance to many aggressive substances, except oils (table page 36-37). Operating temperature: -30° C to +80° C, temporarily up to +100° C. At ambient temperatures above +60° C the load capacity is reduced.

An alternative to pneumatic tyres - Advantages: Puncture-proof, maintenance-free under standard conditions, good stability, precise steering behaviour.

Wheel series overview page 58
With a reduced load capacity, max. speeds of up to 25 km/h are permissible.

Wheels	Wheel Ø * (D) [mm]	Tyre width * (T2) [mm]	Tyre dimension	Rim dimension	Load cap. at 6 km/h [kg]	Load cap. at 25 km/h [kg]	No. of fixing holes	Fixing hole Ø (d2) [mm]	Central hole Ø (d) [mm]	PCD (d1) [mm]
VLEA 410/5	405	105	4.00-8	3.00D-8	950	730	5	16.5	82	130
VLEA 460/5	455	120	5.00-8	3.00D-8	1415	1090	5	16.5	82	130
VLEA 530/5	525	140	6.00-9	4.00E-9	1885	1450	5	16.5	110	145

* Wheel and tyre dimensions are valid for unloaded, new tyres and may slightly change during operation

Further fitting dimensions upon request

Options



	With non-marking tyre	Antistatic version, black tyre	Drive wheel with hub keyway
Technical description page	38	36, 38	
Product code suffix	-SN	-AS	VLEN series
Available for	upon request	upon request	upon request

