

## Compact and levelling castors



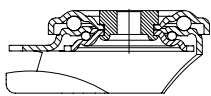
# Table of Contents

		LRA/LKRA LPA/LKPA	LER/LE LR/L	LKR/LK	LH/LHD	LSD	LD	HRLH/ HRLHD	HRIG	HRP/ HRSP
	<b>POA</b> Series POA Wheel Ø 35 - 150 mm Load capacity 75 - 280 kg Page 104									
		LRA/LKRA/LPA/LKPA 35 - 50 mm 75 - 120 kg 420/421					LD-POA 50 mm 250 kg 424		HRIG-POA 45 - 72 mm 180 - 750 kg 426	HRP-/HRSP-POA 45 - 72 mm 180 - 1000 kg 427
	<b>POEV</b> Series POEV Wheel Ø 80 - 300 mm Load capacity 140 - 650 kg Page 164									
					LHD-POEV 80 mm 280 kg 423					
	<b>SE</b> Series SE Wheel Ø 80 - 415 mm Load capacity 200 - 1150 kg Page 180									
					LHD-SE 80 mm 400 kg 423					
	<b>ALST</b> Series ALST Wheel Ø 80 - 300 mm Load capacity 180 - 1150 kg Page 222									
					LHD-ALST 80 mm 360 kg 423					
	<b>ALTH/VSTH</b> Series ALTH/VSTH Wheel Ø 35 - 250 mm Load capacity 100 - 1000 kg Page 246, 258									
		LRA/LKRA/LPA/LKPA 35 - 50 mm 100 - 150 kg 420/421	LR-/L-VSTH 60 mm 200 kg 420/421	LKR-/LK-VSTH 65 mm 250 kg 420/421	LH-/LHD-VSTH-/ALTH 60 - 80 mm 280 - 560 kg 422/423		LD-VSTH 50 - 60 mm 250 kg 424			
	<b>PO</b> Series PO Wheel Ø 50 - 300 mm Load capacity 75 - 1500 kg Page 276/277									
			LER-/LE-PO 60 mm 150 kg 420/421				LD-PO 60 mm 250 kg 424			
	<b>SPO</b> Series SPO Wheel Ø 75 - 250 mm Load capacity 300 - 2000 kg Page 300/301									
					LH-/LHD-SPO 75 - 80 mm 300 - 650 kg 422/423		HRLH-/HRLHD-SPO 75 mm 300 - 600 kg 425			
	<b>GSPO</b> Series GSPO Wheel Ø 35 - 1000 mm Load capacity 100 - 50000 kg Page 314									
		LRA/LKRA/LPA/LKPA 35 - 50 mm 100 - 150 kg 420/421	LR-/L-GSPO 60 mm 200 kg 420/421	LKR-/LK-GSPO 65 mm 350 kg 420/421	LH-/LHD-GSPO 60 - 80 mm 650 - 700 kg 422/423	LSD-GSPO 80 mm 1750 kg 423				HRSP-GSPO 90 mm 2000 kg 427
	<b>SVS</b> Series SVS Wheel Ø 65 - 300 mm Load capacity 750 - 15000 kg Page 330									
					LH-SVS 65 - 80 mm 700 kg 422					

## Pressed steel compact castors with bolt hole fitting

75 - 350 kg

RoHS



### Brackets:

Made of pressed steel, with double ball bearing in the swivel head, strong central kingpin, ball protection by the special top plate and ball disc design. The special Blickle dynamic riveting process of the swivel head results in minimal swivel head play and smooth rolling characteristics with an increased service life achieved by the work hardening of the ball race grooves.

Bolted wheel axle.

Zinc-plated, blue-passivated, Cr6-free.

Bracket overview:

LRA series page 62

LKRA series page 62

LER series page 65

LR series page 65

LKR series page 66



### VSTH-wheel series:

Tread: Made of high-quality polyurethane-elastomer Blickle Extrathane®, 92° shore A, light brown, non-marking, non-staining. Wheel centre: Made of steel, with two pressed-in ball bearings. Detailed description: Page 258 and 48



### POA-wheel series:

Made of high-quality, impact-resistant nylon, 70° shore D, black, with plain bore. Detailed description: Page 104 and 43



### PO-wheel series:

Made of high-quality, impact-resistant nylon, 70° shore D, natural white, with plain bore or two pressed-in ball bearings. Detailed description: Page 276 and 49



### GSPO-wheel series:

Made of high-quality, impact-resistant, hard and tough, highly compressed cast nylon, 80° shore D, natural beige, with two pressed-in ball bearings. Detailed description: Page 314 and 50

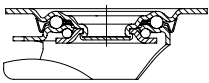
Swivel castors	Wheel Ø [mm]	Wheel width [mm]	Load capacity at 3 km/h [kg]	Bearing type	Total height [mm]	Plate Ø [mm]	Bolt hole Ø [mm]	Offset [mm]
<b>LRA series</b>								
LRA-POA 35G	35	25	75	Plain bore	50	43	11	15
LRA-VSTH 35K	35	27	100	Ball bearing	50	43	11	15
LRA-GSPO 35K	35	28	100 *	Ball bearing	50	43	11	15
<b>LKRA series</b>								
LKRA-POA 52G	50	29	120	Plain bore	70	57	13	29
LKRA-VSTH 50K	50	33	150	Ball bearing	70	57	13	29
LKRA-GSPO 50K	50	32	150 *	Ball bearing	70	57	13	29
<b>LER series</b>								
LER-PO 60G	60	29	150	Plain bore	80	70	13	35
LER-PO 60K	60	32	150	Ball bearing	80	70	13	35
<b>LR series</b>								
LR-VSTH 60K	60	35	200	Ball bearing	80	70	13	35
LR-GSPO 60K	60	32	200 *	Ball bearing	80	70	13	35
<b>LKR series</b>								
LKR-VSTH 65K	65	40	250	Ball bearing	88	88	13	40
LKR-GSPO 65K	65	40	350 *	Ball bearing	88	88	13	40

\* Test in accordance to DIN 12530 with extended resting periods in order to avoid thermal overstressing

## Pressed steel compact castors with top plate fitting

75 - 350 kg

RoHS



### Brackets:

Made of pressed steel, swivel bracket with double ball bearing in the swivel head, swivel head seals (except LPA and LKPA series). The special Blickle dynamic riveting process of the swivel head results in minimal swivel head play and smooth rolling characteristics with an increased service life achieved by the work hardening of the ball race grooves.

Bolted wheel axle.

Zinc-plated, blue-passivated, Cr6-free.

Bracket overview:

LPA series page 62

LKPA series page 62

LE/B series page 64

L/B series page 65

LK/BK series page 66

Top plate drawings: Page 76 and 77



### VSTH-wheel series:

Tread: Made of high-quality polyurethane-elastomer Blickle Extrathane®, 92° shore A, light brown, non-marking, non-staining. Wheel centre: Made of steel, with two pressed-in ball bearings. Detailed description: Page 258 and 48



### POA-wheel series:

Made of high-quality, impact-resistant nylon, 70° shore D, black, with plain bore. Detailed description: Page 104 and 43



### PO-wheel series:

Made of high-quality, impact-resistant nylon, 70° shore D, natural white, with plain bore or two pressed-in ball bearings. Detailed description: Page 276 and 49



### GSP0-wheel series:

Made of high-quality, impact-resistant, hard and tough, highly compressed cast nylon, 80° shore D, natural beige, with two pressed-in ball bearings. Detailed description: Page 314 and 50

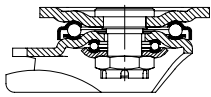
Swivel castors	Fixed castors	Wheel Ø [mm]	Wheel width [mm]	Load capacity at 3 km/h [kg]	Bearing type	Total height [mm]	Plate size [mm]	Bolt hole spacing [mm]	Bolt hole Ø [mm]	Offset swivel castor [mm]
<b>LPA series</b>										
LPA-POA 35G		35	25	75	Plain bore	52	60 x 60	38x38/48x48	6.2	15
LPA-VSTH 35K		35	27	100	Ball bearing	52	60 x 60	38x38/48x48	6.2	15
LPA-GSP0 35K		35	28	100 *	Ball bearing	52	60 x 60	38x38/48x48	6.2	15
<b>LKPA series</b>										
LKPA-POA 52G		50	29	120	Plain bore	73	90 x 66	75x45/61x51	8.5	29
LKPA-VSTH 50K		50	33	150	Ball bearing	73	90 x 66	75x45/61x51	8.5	29
LKPA-GSP0 50K		50	32	150 *	Ball bearing	73	90 x 66	75x45/61x51	8.5	29
<b>LE/B series</b>										
LE-PO 60G	B-PO 60G	60	29	150	Plain bore	80	100 x 85	80 x 60	9	35
LE-PO 60K	B-PO 60K	60	32	150	Ball bearing	80	100 x 85	80 x 60	9	35
<b>L/B series</b>										
L-VSTH 60K	B-VSTH 60K	60	35	200	Ball bearing	80	100 x 85	80 x 60	9	35
L-GSP0 60K	B-GSP0 60K	60	32	200 *	Ball bearing	80	100 x 85	80 x 60	9	35
<b>LK/BK series</b>										
LK-VSTH 65K	BK-VSTH 65K	65	40	250	Ball bearing	90	100 x 85	80 x 60	9	40
LK-GSP0 65K	BK-GSP0 65K	65	40	350 *	Ball bearing	90	100 x 85	80 x 60	9	40

\* Test in accordance to DIN 12530 with extended resting periods in order to avoid thermal overstressing

## Pressed steel compact castors, heavy duty brackets, with top plate fitting

280 - 700 kg

RoHS



### LH/BH-bracket series:

Made of heavy pressed steel, swivel bracket with heavy fork and top plate, very strong bolted and secured central kingpin, double ball bearing in the swivel head, additionally reinforced by the integration of **four specially shaped and hardened bearing seats** resulting in a very high resistance to shock and impact loads.  
Bolted wheel axle.  
Zinc-plated, blue-passivated, Cr6-free.  
Bracket overview: Page 66  
Top plate drawings: Page 77  
Wheel and swivel head 'stop-fix' brake: Page 80



### VSTH-wheel series:

Tread: Made of high-quality polyurethane-elastomer Blickle Extrathane®, 92° shore A, light brown, non-marking, non-staining.  
Wheel centre: Made of steel, with two pressed-in ball bearings.  
Detailed description: Page 258 and 48



### SPO-wheel series:

Made of high-quality, impact-resistant nylon, very rugged, heavy wheel design, 70° shore D, natural white, with plain bore or two pressed-in ball bearings.  
Detailed description: Page 300 and 49



### GSP0-wheel series:

Made of high-quality, impact-resistant, hard and tough, highly compressed cast nylon, 80° shore D, natural beige, with two pressed-in ball bearings.  
Detailed description: Page 314 and 50



### SVS-wheel series:

Made of mild steel, with slightly crowned tread, with two pressed-in ball bearings.  
Detailed description: Page 330 and 50

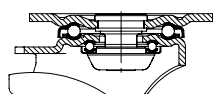
Swivel castors	Fixed castors	Swivel castors with 'stop-fix' brake	Wheel Ø [mm]	Wheel width [mm]	Load cap. at 3 km/h [kg]	Bearing type	Total height [mm]	Plate size [mm]	Bolt hole spacing [mm]	Bolt hole Ø [mm]	Offset swvl castor [mm]
<b>LH/BH series</b>											
LH-VSTH 62K			60	60	320	Ball bearing	92	100 x 85	80 x 60	9	45
LH-GSP0 65K	BH-GSP0 65K		65	40	650 *	Ball bearing	97	100 x 85	80 x 60	9	45
LH-SVS 65K	BH-SVS 65K		65	40	700	Ball bearing	97	100 x 85	80 x 60	9	45
LH-SPO 75G	BH-SPO 75G	LH-SPO 75G-FI	75	32	300	Plain bore	118	100 x 85	80 x 60	9	45
LH-SPO 75K	BH-SPO 75K	LH-SPO 75K-FI	75	32	300	Ball bearing	118	100 x 85	80 x 60	9	45
LH-VSTH 80K	BH-VSTH 80K	LH-VSTH 80K-FI	80	40	280	Ball bearing	120	100 x 85	80 x 60	9	45
LH-SPO 80K	BH-SPO 80K	LH-SPO 80K-FI	80	37	350	Ball bearing	120	100 x 85	80 x 60	9	45
LH-GSP0 80K	BH-GSP0 80K	LH-GSP0 80K-FI	80	40	700 *	Ball bearing	120	100 x 85	80 x 60	9	45
LH-SVS 80K	BH-SVS 80K		80	40	700	Ball bearing	120	100 x 85	80 x 60	9	45
LH-VSTH 82K			80	70	500	Ball bearing	112	100 x 85	80 x 60	9	45
LH-SPO 82K			80	70	650	Ball bearing	112	100 x 85	80 x 60	9	45

\* Test in accordance to DIN 12530 with extended resting periods in order to avoid thermal overstressing

## Pressed steel or welded steel extra heavy duty twin wheel compact castors, with top plate fitting

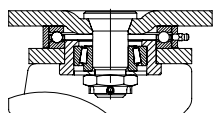
280 - 1750 kg

RoHS



### LHD-bracket series:

Made of heavy pressed steel, with heavy fork and top plate, very strong bolted and secured central kingpin, double ball bearing in the swivel head, additionally reinforced by the integration of **four specially shaped and hardened bearing seats** resulting in a very high resistance to shock and impact loads. Bolted wheel axle. Zinc-plated, blue-passivated, Cr6-free. Bracket overview: Page 67 Top plate drawings: Page 77



### LSD-bracket series:

Particularly rugged welded steel construction, with axial grooved ball bearing DIN 711 and tapered roller bearing DIN 720 in the swivel head, dust and splash-proof, fitted grease nipple, bolted and secured with a welded very strong central kingpin. Bolted wheel axle. Zinc-plated, yellow-passivated, Cr6-free. Bracket overview: Page 68 Top plate drawings: Page 77



### POEV-wheel series:

Tyres: Made of high-quality elastic solid rubber in smooth rolling quality 'Blickle EasyRoll', 65° shore A, black. Wheel centre: Made of high-quality, impact-resistant nylon, black, with a centrally encapsulated ball bearing (C). Detailed description: Page 164 and 44



### SE-wheel series:

Tyres: Made of high-quality elastic solid rubber in smooth rolling quality 'Blickle EasyRoll', 65° shore A, black. Wheel centre: Made of high-quality, impact-resistant nylon, black, with two pressed-in ball bearings. Detailed description: Page 180 and 45



### ALST-wheel series:

Tread: Made of high-quality polyurethane-elastomer Blickle Softhane®, 75° shore A, green, non-marking, non-staining. Wheel centre: Made of die-cast aluminium, with two pressed-in ball bearings. Detailed description: Page 222 and 47



### ALTH-wheel series:

Tread: Made of high-quality polyurethane-elastomer Blickle Extrathane®, 92° shore A, light brown, non-marking, non-staining. Wheel centre: Made of die-cast aluminium, with two pressed-in ball bearings. Detailed description: Page 246 and 48



### VSTH-wheel series:

Tread: Made of high-quality polyurethane-elastomer Blickle Extrathane®, 92° shore A, light brown, non-marking, non-staining. Wheel centre: Made of steel, with two pressed-in ball bearings. Detailed description: Page 258 and 48



### SPO-wheel series:

Made of high-quality, impact-resistant nylon, very rugged, heavy wheel design, 70° shore D, natural white, with plain bore or two pressed-in ball bearings. Detailed description: Page 300 and 49



### GSPO-wheel series:

Made of high-quality, impact-resistant, hard and tough, highly compressed cast nylon, 80° shore D, natural beige, with two pressed-in ball bearings. Detailed description: Page 314 and 50

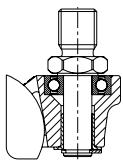
Swivel castors	Wheel Ø [mm]	Wheel width [mm]	Load capacity at 3 km/h [kg]	Bearing type	Total height [mm]	Plate size [mm]	Bolt hole spacing [mm]	Bolt hole Ø [mm]	Offset [mm]
<b>LHD series</b>									
LHD-VSTH 60K	60	2 x 35	360	Ball bearing	92	100 x 85	80 x 60	9	40
LHD-GSPO 60K	60	2 x 32	700 *	Ball bearing	92	100 x 85	80 x 60	9	40
LHD-SPO 75K	75	2 x 32	600	Ball bearing	110	100 x 85	80 x 60	9	45
LHD-POEV 80K	80	2 x 32	280	Ball bearing (C)	112	100 x 85	80 x 60	9	45
LHD-ALST 80K	80	2 x 30	360	Ball bearing	112	100 x 85	80 x 60	9	45
LHD-ALTH 80K	80	2 x 30	360	Ball bearing	112	100 x 85	80 x 60	9	45
LHD-SE 80K	80	2 x 45	400	Ball bearing	115	140 x 110	105 x 75-80	11	45
LHD-VSTH 80K	80	2 x 40	560	Ball bearing	115	140 x 110	105 x 75-80	11	45
<b>LSD series</b>									
LSD-GSPO 80K	80	2 x 40	1750 *	Ball bearing	125	140 x 110	105 x 75-80	11	40

\* Test in accordance to DIN 12530 with extended resting periods in order to avoid thermal overstressing

## Twin wheel compact castors

250 kg

RoHS



### LD-bracket series:

Zinc die-cast swivel bracket, with high-quality ball bearing in the swivel head, with zinc-plated steel threaded pin M16x20. Bolted wheel axle. Bracket overview: Page 73



### VSTH-wheel series:

Tread: Made of high-quality polyurethane-elastomer Blickle Extrathane®, 92° shore A, light brown, non-marking, non-staining. Wheel centre: Made of steel, with two pressed-in ball bearings. Detailed description: Page 258 and 48



### POA-wheel series:

Made of high-quality, impact-resistant nylon, 70° shore D, black, with plain bore. Detailed description: Page 104 and 43



### PO-wheel series:

Made of high-quality, impact-resistant nylon, 70° shore D, natural white, with plain bore. Detailed description: Page 276 and 49

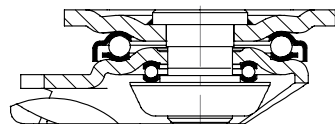
Swivel castors	Wheel Ø [mm]	Wheel width [mm]	Total width castor [mm]	Load capacity at 3 km/h [kg]	Bearing type	Total height [mm]	Threaded pin [mm]	Offset [mm]
<b>LD series</b>								
LD-POA 52G	50	2 x 29	95	250	Plain bore	56	M16x20	39
LD-VSTH 50K	50	2 x 33	100	250	Ball bearing	56	M16x20	39
LD-PO 60G	60	2 x 29	105	250	Plain bore	65	M16x20	39
LD-VSTH 60K	60	2 x 35	105	250	Ball bearing	65	M16x20	39

Series: HRLH-SPO, HRLHD-SPO

**Levelling castors with integrated truck lock, with top plate fitting, with heavy duty nylon wheel**

300 - 600 kg

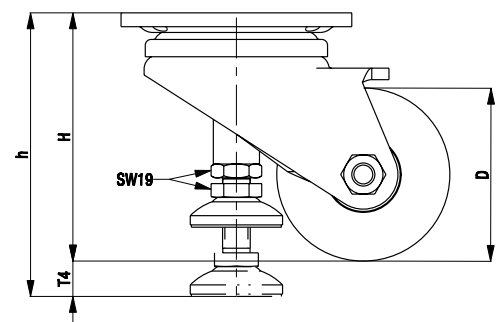
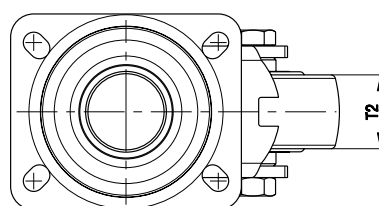
RoHS



**Brackets:** HRLH/HRLHD series - Made of heavy pressed steel, with heavy fork and top plate fitting, very strong bolted and secured central kingpin, double ball bearing in the swivel head, additionally reinforced by the integration of **four specially shaped and hardened bearing seats** resulting in a very high resistance to shock and impact loads.  
Truck lock made of steel.  
Bolted wheel axle.  
Zinc-plated, blue-passivated, Cr6-free.  
Bracket overview: Page 73  
Top plate drawings: Page 77

**Wheels:** SPO series - Made of high-quality, impact-resistant nylon, very rugged, heavy wheel design, 70° shore D, natural white.  
Bearing type: Two pressed-in ball bearings.  
Detailed description: Page 300 and 49

Swivel castor	Twin wheel swivel castor	Wheel Ø (D) [mm]	Wheel width (T2) [mm]	Load capacity [kg]	Bearing type	Total height (H) [mm]	Max. total height (h) [mm]	Adjustment range (T4) [mm]	Plate size [mm]	Bolt hole spacing [mm]	Bolt hole Ø [mm]	Offset [mm]
HRLH-SPO 75K		75	32	300	Ball bearing	108	123	15	100 x 85	80 x 60	9	55
	HRLHD-SPO 75K	75	2 x 32	600	Ball bearing	108	123	15	100 x 85	80 x 60	9	55





Series: HRIG-POA

**Levelling castors with integrated truck lock, with bolt hole fitting (female thread), with nylon wheel**

180 - 750 kg

RoHS



**Brackets:** HRIG series - Made of die-cast aluminium, with sealed ball bearing in the swivel head, hexagon steel plate, female thread in the bolt hole.  
Powder-coated, colour ivory.  
Truck lock made of hard rubber, black.  
Height adjustment with flat spanner or integrated adjustment wheel.  
Bolted wheel axle.  
Steel parts are zinc-plated, blue-passivated, Cr6-free.  
Bracket overview: Page 73

**Wheels:** POA series - Made of high-quality, impact-resistant nylon, 70° shore D, black.  
Bearing type: Plain bore.



Swivel castors	Wheel Ø	Wheel width	Load capacity *	Bearing type	Total height	Max. total height	Adjustment range	Width across flats on hexagon	Bolt hole Ø	Offset
	(D) [mm]	(T2) [mm]			(H) [mm]	(h) [mm]		(SW) [mm]		
<b>HRIG-POA 45G</b>	45	18	180	Plain bore	72	80	8	40	M8 x 12	32
<b>HRIG-POA 50G</b>	50	24	250	Plain bore	84	90	6	46	M12 x 15	38
<b>HRIG-POA 63G</b>	63	30	500	Plain bore	104	114	10	65	M12 x 15	46
<b>HRIG-POA 72G</b>	72	32	750	Plain bore	122	132	10	67	M16 x 16	52

\* The load capacity is determined under the following test conditions:

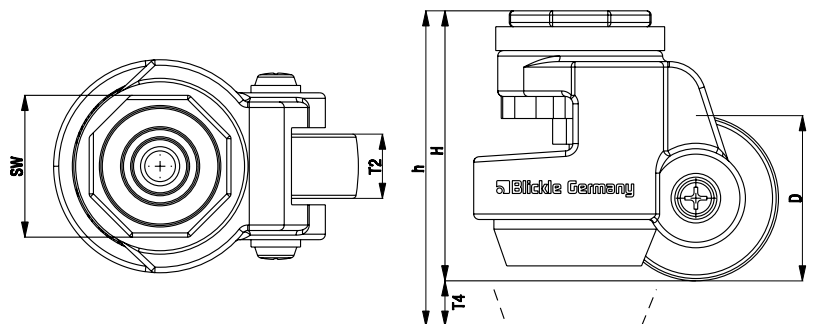
- Speed: max. 1 km/h
- Temperature: +15° C to +30° C
- Hard, horizontal surface without obstacles
- Travel distance: Cool down periods of 15 min. are required after max. 50 m

21

Options



Stainless steel version	
Technical description page	36
Product code suffix	
Available for	upon request



Series: HRP-POA, HRSP-POA, HRSP-GSPO

## Levelling castors with integrated truck lock, with top plate fitting, with nylon wheel or extra heavy duty cast nylon wheel

180 - 2000 kg

RoHS



**Brackets:** HRP/HRSP series - Made of die-cast aluminium, with sealed ball bearing in the swivel head, steel top plate fitting.

Powder-coated, colour ivory.

Truck lock made of hard rubber, HRSP series made of aluminium, black.

Height adjustment with flat spanner or integrated adjustment wheel; HRSP series only with flat spanner.

Bolted wheel axle.

Steel parts are zinc-plated, blue-passivated, Cr6-free.

Bracket overview: Page 73

Top plate drawings: Page 79

**Wheels:** POA series - Made of high-quality, impact-resistant nylon, 70° shore D, black.

GSPO series - Made of high-quality, impact-resistant, hard and tough, highly compressed cast nylon, 80° shore D, natural beige.

Bearing type: Plain bore.

Swivel castors	Wheel Ø	Wheel width	Load capacity *	Bearing type	Total height (H) [mm]	Max. total height (h) [mm]	Adjustment range (T4) [mm]	Plate size [mm]	Bolt hole spacing [mm]	Bolt hole Ø [mm]	Offset [mm]
	(D) [mm]	(T2) [mm]									
HRP-POA 45G	45	18	180	Plain bore	72	80	8	55 x 55	42 x 42	7	32
HRP-POA 50G	50	24	250	Plain bore	84	90	6	73 x 73	58 x 58	7	38
HRP-POA 63G	63	30	500	Plain bore	104	116	12	90 x 90	70 x 70	9	46
HRP-POA 72G	72	32	750	Plain bore	122	134	12	95 x 95	70 x 70	11	52
HRSP-POA 72G	72	32	1000	Plain bore	122	134	12	95 x 95	70 x 70	11	55
HRSP-GSPO 90G	90	55	2000	Plain bore	130	150	20	100 x 100	70 x 70	13	70

\* The load capacity is determined under the following test conditions:

- Speed: max. 1 km/h
- Temperature: +15° C to +30° C
- Hard, horizontal surface without obstacles
- Travel distance: Cool down periods of 15 min. are required after max. 50 m

### Options



Stainless steel version

Technical description page 36

Product code suffix upon request

Available for upon request

