


## Heavy duty wheels and castors with cast polyurethane tread **Blickle Besthane**<sup>®</sup>



12

## Table of Contents

	<b>VSB/GB</b>	<b>LU</b>	<b>LH</b>	<b>LS</b>	<b>LSD</b>
					
Series	VSB/GB	LU-GB	LH-VSB/GB	LS-GB	LSD-GB
Wheel Ø	80 - 1000 mm	125 - 200 mm	80 - 250 mm	125 - 600 mm	100 - 500 mm
Load capacity	400 - 30000 kg	700 - 750 kg	400 - 900 kg	700 - 12000 kg	720 - 10000 kg
Page	<b>268/269</b>	<b>270</b>	<b>271</b>	<b>272</b>	<b>273</b>

Series: VSB, GB, wheel Ø 80 - 200 mm

## Heavy duty wheels with Blickle Besthane® polyurethane tread, with steel or cast iron wheel centre

400 - 1600 kg

RoHS



<b>Tread &amp; tyre hardness</b>	92° shore A
<b>Temperature resistance</b>	-25° C - +70° C temporarily up to +90° C
<b>Rolling resistance</b>	excellent
<b>Operating noise</b>	good
<b>Floor surface preservation</b>	good



### VSB, GB-wheel series:

**Tread:** Made of high-quality, reaction-injected polyurethane-elastomer Blickle Besthane®, 92° shore A hardness, low-noise operation, very low rolling resistance, **high dynamic load capacity**, good floor preservation, high abrasion resistance, high cut and tear propagation resistance, colour brown, non-marking, non-staining, very good chemical connection with the wheel centre.

(Material description page 39)

**Wheel centre:** VSB series: Made of steel.

GB series: Made of rugged grey cast iron, wheel Ø 150 mm or larger with grease nipple, lacquered, colour silver.

### Bearing type:

- Ball bearing: Two pressed-in ball bearings, lubricated with long-life grease.

### Other features:

High chemical resistance to many aggressive substances (table page 36-37).

Operating temperature: -25° C to +70° C, temporarily up to +90° C.

At ambient temperatures above +40° C the load capacity is reduced.

Maintenance-free under standard conditions.

**Wheel series overview page 48**

Wheels	Wheel Ø (D) [mm]	Wheel width (T2) [mm]	Load cap. at 4 km/h [kg]	Load cap. at 10 km/h * [kg]	Load cap. at 16 km/h * [kg]	Bearing type	Axle bore Ø (d) [mm]	Hub length (T1) [mm]
VSB 82/20K	80	70	500	300	-	Ball bearing	20	70
GB 100/15K	100	40	400	240	-	Ball bearing	15	40
GB 101/20-50K	100	50	500	300	-	Ball bearing	20	50
GB 101/20K	100	50	500	300	-	Ball bearing	20	60
GB 125/15K	125	40	500	300	-	Ball bearing	15	45
GB 128/20K	125	60	700	420	-	Ball bearing	20	60
GB 140/20K	140	54	800	480	-	Ball bearing	20	60
GB 150/20-50K	150	50	750	450	-	Ball bearing	20	50
GB 150/20K	150	50	750	450	-	Ball bearing	20	60
GB 152/20K	150	60	850	500	-	Ball bearing	20	60
GB 152/25K	150	60	850	500	-	Ball bearing	25	60
GB 154/25K	150	80	1050	630	-	Ball bearing	25	80
GB 160/20K	160	50	800	480	-	Ball bearing	20	60
GB 160/25K	160	50	800	480	-	Ball bearing	25	60
GB 180/20K	180	50	900	550	-	Ball bearing	20	60
GB 180/25K	180	50	900	550	-	Ball bearing	25	60
GB 182/25K	180	65	1100	700	-	Ball bearing	25	75
GB 184/25K	180	80	1400	900	-	Ball bearing	25	80
GB 200/20K	200	50	1000	700	400	Ball bearing	20	60
GB 200/25K	200	50	1000	700	400	Ball bearing	25	60
GB 201/25K	200	60	1200	800	450	Ball bearing	25	60
GB 202/25K	200	80	1600	1100	600	Ball bearing	25	90
GB 202/30K	200	80	1600	1100	600	Ball bearing	30	90
GB 202/35K	200	80	1600	1100	600	Ball bearing	35	90

\* Considerably higher load capacities are possible for applications without obstacles

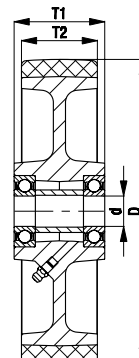
For further wheel Ø refer to the next page

12

### Options



	Hydrolysis resistant, with cast nylon wheel centre	Drive wheels with hub keyway	Hub fitting wheels
Technical description page	39	57	58
<b>Product code suffix</b>	<b>GSP0B series</b>	<b>GBN series</b>	<b>GBA series</b>
Available for	upon request	refer to page 464-465	refer to page 469



Series: GB, wheel Ø 250 - 1000 mm

**Heavy duty wheels with Blickle Besthane® polyurethane tread, with cast iron wheel centre**

1250 - 30000 kg RoHS



<b>Tread &amp; tyre hardness</b>	92° shore A
<b>Temperature resistance</b>	-25° C - +70° C temporarily up to +90° C
<b>Rolling resistance</b>	excellent
<b>Operating noise</b>	good
<b>Floor surface preservation</b>	good



**GB-wheel series:**

**Tread:** Made of high-quality, reaction-injected polyurethane-elastomer Blickle Besthane®. 92° shore A hardness, low-noise operation, very low rolling resistance, **high dynamic load capacity**, good floor preservation, high abrasion resistance, high cut and tear propagation resistance, colour brown, non-marking, non-staining, very good chemical connection with the wheel centre.

(Material description page 39)

**Wheel centre:** Made of rugged grey cast iron, with grease nipple, lacquered, colour silver.

**Bearing types:**

- Ball bearing: Two pressed-in ball bearings, lubricated with long-life grease.
- Spherical roller bearing: Two pressed-in spherical roller bearings, sealed, extremely rugged, very durable, lubricated with long-life grease.

**Other features:**

High chemical resistance to many aggressive substances (table page 36-37).

Operating temperature: -25° C to +70° C, temporarily up to +90° C.

At ambient temperatures above +40° C the load capacity is reduced.

Maintenance-free under standard conditions.

**Wheel series overview page 48**

Wheels	Wheel Ø (D) [mm]	Wheel width (T2) [mm]	Load cap. at 4 km/h [kg]	Load cap. at 10 km/h * [kg]	Load cap. at 16 km/h * [kg]	Bearing type	Axle bore Ø (d) [mm]	Hub length (T1) [mm]
GB 251/25K	250	50	1250	850	500	Ball bearing	25	60
GB 251/30K	250	50	1250	850	500	Ball bearing	30	60
GB 250/25K	250	60	1500	1000	550	Ball bearing	25	70
GB 250/30K	250	60	1500	1000	550	Ball bearing	30	70
GB 250/35K	250	60	1500	1000	550	Ball bearing	35	70
GB 252/25K	250	80	1800	1400	750	Ball bearing	25	90
GB 252/30K	250	80	2000	1400	750	Ball bearing	30	90
GB 253/35K	250	100	2500	1700	1000	Ball bearing	35	100
GB 254/40K	250	130	3000	2100	1200	Ball bearing	40	140
GB 300/30K	300	60	1800	1200	700	Ball bearing	30	70
GB 302/30K	300	80	2400	1600	900	Ball bearing	30	90
GB 302/35K	300	80	2400	1600	900	Ball bearing	35	90
GB 304/35K	300	100	3000	2000	1200	Ball bearing	35	120
GB 306/50K	300	140	3700	2800	1600	Ball bearing	50	140
GB 362/40K	360	75	2500	1700	1000	Ball bearing	40	90
GB 363/40K	360	100	3600	2400	1350	Ball bearing	40	100
GB 364/40K	360	120	3800	2800	1600	Ball bearing	40	120
GB 402/40K	400	80	3000	2200	1200	Ball bearing	40	90
GB 404/40K	400	100	3800	2600	1500	Ball bearing	40	120
GB 406/50K	400	125	5000	3300	1800	Ball bearing	50	125
GB 408/50K	400	150	5700	4000	2200	Ball bearing	50	150
GB 500/50K	500	100	5000	3300	1800	Ball bearing	50	100
GB 504/60K	500	150	7500	5000	2800	Ball bearing	60	150
GB 506/80K	500	200	10000	6500	3700	Ball bearing	80	200
GB 602/80K	600	150	9000	6000	3400	Ball bearing	80	150
GB 604/80K	600	200	12000	8000	4500	Ball bearing	80	200
GB 750/120K	750	200	15000	10000	5500	Ball bearing	120	200
GB 1000/160PR	1000	300	30000	20000	11000	Sph. rol. brg.	160	330

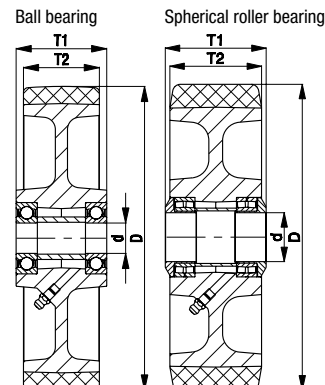
\* Considerably higher load capacities are possible for applications without obstacles

Further dimensions upon request

**Options**



	Hydrolysis resistant, with cast nylon wheel centre	Drive wheels with hub keyway	Hub fitting wheels
Technical description page	39	57	58
<b>Product code suffix</b>	<b>GSP0B series</b>	<b>GBN series</b>	<b>GBA series</b>
Available for	upon request	refer to page 464-465	refer to page 469

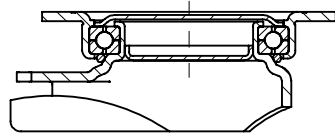
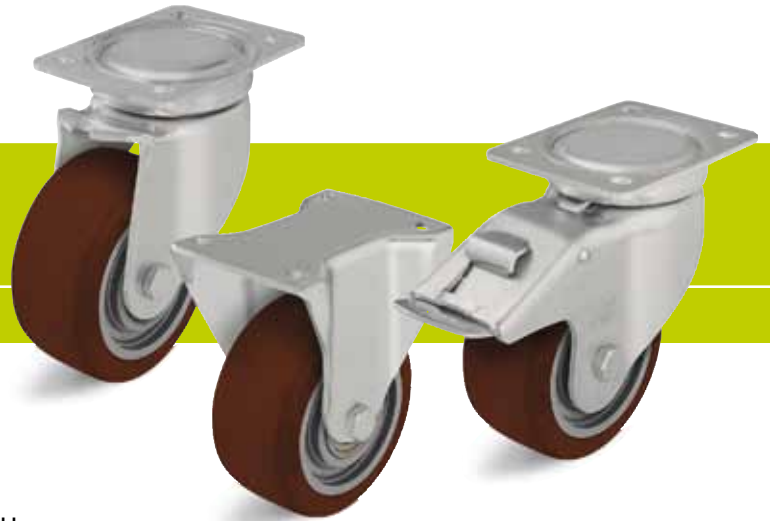


Series: LU-GB, BH-GB

**Pressed steel castors, closed medium heavy duty brackets, top plate fitting, wheel with Blickle Besthane® polyurethane tread**

700 - 750 kg

RoHS



**Brackets:** LU/BH series - Made of heavy pressed steel, swivel bracket with four-point contact ball bearing in the swivel head for optimal absorption of vertical and horizontal forces, closed sealed swivel head. The use of hardened bearing seats in conjunction with the special Blickle dynamic riveting process provides increased protection against shocks and impact loads and results in smooth rolling characteristics, low abrasion and an increased service life. Bolted wheel axle.

Zinc-plated, blue-passivated, Cr6-free.

Bracket overview: Page 66

Top plate drawings: Page 77

Wheel and swivel head 'stop-fix' brake: Page 80

**Wheels:** GB series - Tread: Made of high-quality polyurethane-elastomer Blickle Besthane®, 92° shore A, **high dynamic load capacity**, brown, non-marking, non-staining.

Wheel centre: Made of rugged grey cast iron, wheel Ø 150 mm or larger with grease nipple, lacquered, silver. Bearing type: Two pressed-in ball bearings.

Detailed description: Page 268 and 48



Swivel castors	Fixed castors	Swivel castors with 'stop-fix' brake	Wheel Ø [mm]	Wheel width [mm]	Load capacity [kg]	Bearing type	Total height [mm]	Plate size [mm]	Bolt hole spacing [mm]	Bolt hole Ø [mm]	Offset swivel castor [mm]
LU-GB 128K	BH-GB 128K	LU-GB 128K-FI	125	60	700	Ball bearing	170	140 x 110	105 x 75-80	11	55
LU-GB 150K	BH-GB 150K	LU-GB 150K-FI	150	50	750	Ball bearing	197	140 x 110	105 x 75-80	11	61
LU-GB 160K	BH-GB 160K	LU-GB 160K-FI	160	50	750	Ball bearing	202	140 x 110	105 x 75-80	11	61
LU-GB 200K	BH-GB 200K	LU-GB 200K-FI	200	50	750	Ball bearing	245	140 x 110	105 x 75-80	11	63

12

**Options**



	With hydrolysis resistant wheel	Directional lock (retro fit) 1 x 360° *	With steel foot guard
Technical description page	39	83	84
Product code suffix	<b>GSPOB series</b>	<b>RI-05.03</b>	<b>-FS</b>
Available for	upon request	all sizes	upon request

\* Only for swivel castors without brake

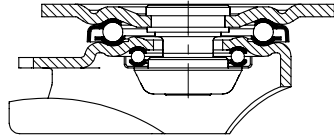


Series: LH-VSB, BH-VSB, LH-GB, BH-GB

**Pressed steel castors, heavy duty brackets, with top plate fitting, wheel with Blickle Besthane® polyurethane tread**

400 - 900 kg

RoHS



**Brackets:** LH/BH series - Made of heavy pressed steel, swivel bracket with heavy fork and top plate, very strong bolted and secured central kingpin, double ball bearing in the swivel head, additionally reinforced by the integration of **four specially shaped and hardened bearing seats** resulting in a very high resistance to shock and impact loads.  
 Bolted wheel axle.  
 Zinc-plated, blue-passivated, Cr6-free.  
 Bracket overview: Page 66  
 Top plate drawings: Page 77  
 Wheel and swivel head 'stop-fix' brake: Page 80

**Wheels:** VSB/GB series - Tread: Made of high-quality polyurethane-elastomer Blickle Besthane®, 92° shore A, **high dynamic load capacity**, brown, non-marking, non-staining.  
 Wheel centre: VSB series: Made of steel.  
 GB series: Made of rugged grey cast iron, wheel Ø 150 mm or larger with grease nipple, lacquered, silver.  
 Bearing type: Two pressed-in ball bearings.  
 Detailed description: Page 268, 269 and 48



Swivel castors	Fixed castors	Swivel castors with 'stop-fix' brake	Wheel Ø [mm]	Wheel width [mm]	Load capacity [kg]	Bearing type	Total height [mm]	Plate size [mm]	Bolt hole spacing [mm]	Bolt hole Ø [mm]	Offset swivel castor [mm]
LH-VSB 82K			80	70	500	Ball bearing	112	100 x 85	80 x 60	9	45
LH-GB 100K-1	BH-GB 100K-1	LH-GB 100K-1-FI	100	40	400	Ball bearing	140	100 x 85	80 x 60	9	45
LH-GB 100K-3	BH-GB 100K-3	LH-GB 100K-3-FI	100	40	400	Ball bearing	140	140 x 110	105 x 75-80	11	45
LH-GB 125K-1	BH-GB 125K-1	LH-GB 125K-1-FI	125	40	500	Ball bearing	165	100 x 85	80 x 60	9	45
LH-GB 125K-3	BH-GB 125K-3	LH-GB 125K-3-FI	125	40	500	Ball bearing	165	140 x 110	105 x 75-80	11	45
LH-GB 128K	BH-GB 128K	LH-GB 128K-FI	125	60	700	Ball bearing	170	140 x 110	105 x 75-80	11	55
LH-GB 150K	BH-GB 150K	LH-GB 150K-FI	150	50	750	Ball bearing	197	140 x 110	105 x 75-80	11	65
LH-GB 160K	BH-GB 160K	LH-GB 160K-FI	160	50	800	Ball bearing	202	140 x 110	105 x 75-80	11	65
LH-GB 180K	BH-GB 180K	LH-GB 180K-FI	180	50	900	Ball bearing	223	140 x 110	105 x 75-80	11	65
LH-GB 200K	BH-GB 200K	LH-GB 200K-FI	200	50	900	Ball bearing	245	140 x 110	105 x 75-80	11	70
LH-GB 202K	BH-GB 202K *	**	200	80	800	Ball bearing	245	140 x 110	105 x 75-80	11	70
LH-GB 250K	BH-GB 250K	**	250	60	900	Ball bearing	295	140 x 110	105 x 75-80	11	82

\* Welded steel construction

\*\* For the 'stop-top' brake version refer to 'Options'

12

**Options**



	With hydrolysis resistant wheel	With 'stop-top' brake	With central braking system 'central-stop'	With 'ideal-stop' brake ttl. height +17mm ***	Directional lock (retro-fit) 1 x 360°	With steel foot guard	Truck lock
Technical description page	39	80	81	80	83	84	82, 483
Product code suffix	<b>GSPOB series</b>	<b>-ST</b>	<b>-CS13</b>	<b>-IS</b>	<b>refer to ****</b>	<b>-FS</b>	<b>FF 125/150/160/200</b>
Available for	upon request	wheel Ø 100-250 mm	wheel Ø 125x60, 160, 200x50, 250 mm	wheel Ø 125x60, 160, 200x50, 250 mm	for wheel Ø and plate dim. refer to ****	upon request	wheel Ø 125x60, 150, 160, 200 mm

\*\*\* Matching synthetic adapter plate for total height compensation for swivel and fixed castors without 'ideal-stop' brake: **Product code AP3**

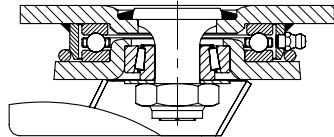
\*\*\*\* **RI-04.01** available for wheel Ø 100 - 125 mm with plate 100x85 mm, **RI-04.03** available for wheel Ø 100 - 125x40 mm with plate 140x110 mm, **RI-05.03** available for wheel Ø 125x60 - 200x50 mm (only for swivel castors without brake)

Series: LS-GB, BS-GB

**Welded steel heavy duty castors, strong swivel head design, wheel with Blickle Besthane® polyurethane tread**

700 - 12000 kg

RoHS



**Brackets:** LS/BS series - Particularly rugged welded steel construction, swivel bracket with axial grooved ball bearing DIN 711 and tapered roller bearing DIN 720 in the swivel head, dust and splash-proof, fitted grease nipple, bolted and secured with a welded very strong central kingpin. Bolted wheel axle.  
 Wheel Ø 125-400 mm: Zinc-plated, yellow-passivated, Cr6-free.  
 Wheel Ø 500-600 mm: Lacquered, red.  
 Bracket overview: Page 68  
 Top plate drawings: Page 77 and 78  
 Wheel and swivel head 'stop-top' brake: Page 80

**Wheels:** GB series - Tread: Made of high-quality polyurethane-elastomer Blickle Besthane®, 92° shore A, **high dynamic load capacity**, brown, non-marking, non-staining.  
 Wheel centre: Made of rugged grey cast iron, wheel Ø 150 mm or larger with grease nipple, lacquered, silver.  
 Bearing type: Two pressed-in ball bearings.  
 Detailed description: Page 268, 269 and 48



Swivel castors	Fixed castors	Swivel castors with 'stop-top' brake	Wheel Ø [mm]	Wheel width [mm]	Load capacity [kg]	Bearing type	Total height [mm]	Plate size [mm]	Bolt hole spacing [mm]	Bolt hole Ø [mm]	Offset swivel castor [mm]
LS-GB 128K	BS-GB 128K	LS-GB 128K-ST	125	60	700	Ball bearing	170	140 x 110	105 x 75-80	11	50
LS-GB 150K	BS-GB 150K	LS-GB 150K-ST	150	50	750	Ball bearing	200	140 x 110	105 x 75-80	11	55
LS-GB 152K	BS-GB 152K	LS-GB 152K-ST	150	60	850	Ball bearing	200	140 x 110	105 x 75-80	11	55
LS-GB 154K	BS-GB 154K	LS-GB 154K-ST	150	80	1050	Ball bearing	205	175 x 140	140 x 105	14	65
LS-GB 160K	BS-GB 160K	LS-GB 160K-ST	160	50	800	Ball bearing	205	140 x 110	105 x 75-80	11	55
LS-GB 200K	BS-GB 200K	LS-GB 200K-ST	200	50	1000	Ball bearing	245	140 x 110	105 x 75-80	11	60
LS-GB 202K	BS-GB 202K	LS-GB 202K-ST	200	80	1600	Ball bearing	255	175 x 140	140 x 105	14	65
LS-GB 250K	BS-GB 250K	LS-GB 250K-ST	250	60	1500	Ball bearing	305	175 x 140	140 x 105	14	75
LS-GB 252K	BS-GB 252K	LS-GB 252K-ST	250	80	1800	Ball bearing	305	175 x 140	140 x 105	14	75
LS-GB 300K	BS-GB 300K	LS-GB 300K-ST	300	60	1800	Ball bearing	355	175 x 140	140 x 105	14	85
LS-GB 302K	BS-GB 302K	LS-GB 302K-ST	300	80	2400	Ball bearing	355	175 x 140	140 x 105	14	85
LS-GB 304K	BS-GB 304K	*	300	100	3000	Ball bearing	370	200 x 160	160 x 120	14	85
LS-GB 362K	BS-GB 362K	*	360	75	2500	Ball bearing	430	200 x 160	160 x 120	14	100
LS-GB 364K	BS-GB 364K	*	360	120	3800	Ball bearing	430	255 x 200	210 x 160	18	100
LS-GB 402K	BS-GB 402K	*	400	80	3000	Ball bearing	470	200 x 160	160 x 120	14	100
LS-GB 406K	BS-GB 406K	*	400	125	5000	Ball bearing	480	255 x 200	210 x 160	18	125
LS-GB 504K	BS-GB 504K	*	500	150	7500	Ball bearing	630	400 x 300	340 x 240	26	125
LS-GB 604K	BS-GB 604K	*	600	200	12000	Ball bearing	730	400 x 300	340 x 240	26	130

\* For the 'Radstop' brake version refer to 'Options'

**Options**

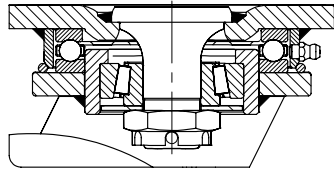
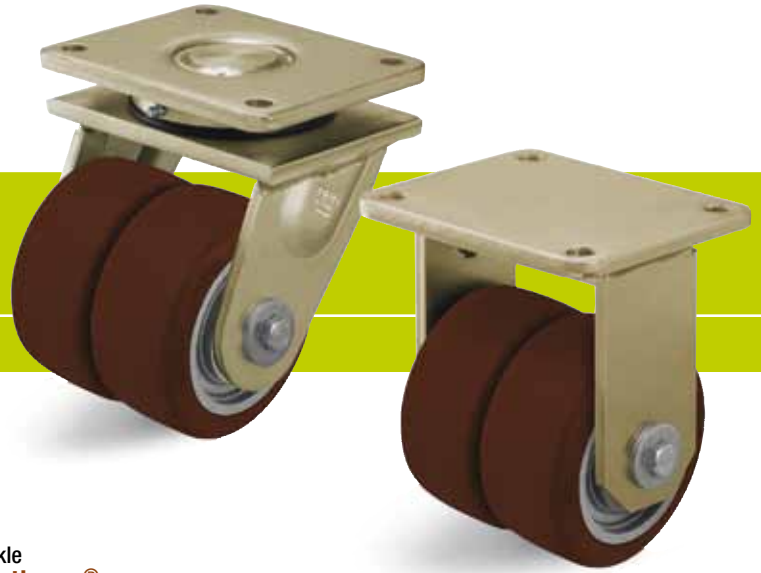


	Image with red lacquered bracket Ø 500-600 mm	With hydrolysis resistant wheel	With 'Radstop' wheel brake	With directional lock 2 x 180° (-RI2) / 4 x 90° (-RI4)	With directional lock 4 x 90° (hand-operated)	With steel foot guard	Truck lock
Technical description page		39	81	83	83	84	82, 483
Product code suffix		<b>GSPOB series</b>	<b>-RAH</b>	<b>-RI2 / -RI4</b>	<b>-RI4H</b>	<b>-FS</b>	<b>FF 125/150/160/200</b>
Available for		upon request	Ø 300x100 or larger upon request	wheel Ø 125 - 300x80 mm	Ø 300x100 or larger upon request	upon request	wheel Ø 125 - 200x50 mm

Series: LSD-GB, BSD-GB

**Welded steel heavy duty twin wheel castors, strong swivel head design, wheels with Blickle Besthane® polyurethane tread**

720 - 10000 kg RoHS



**Brackets:** LSD/BSG series - Particularly rugged welded steel construction, swivel bracket with axial grooved ball bearing DIN 711 and tapered roller bearing DIN 720 in the swivel head, dust and splash-proof, fitted grease nipple, bolted and secured with a welded very strong central kingpin.  
 Bolted wheel axle.  
 Wheel Ø 100-300 mm: Zinc-plated, yellow-passivated, Cr6-free.  
 Wheel Ø 400-500 mm: Lacquered, red.  
 Bracket overview: Page 68  
 Top plate drawings: Page 77 and 78

**Wheels:** GB series - Tread: Made of high-quality polyurethane-elastomer Blickle Besthane®, 92° shore A, **high dynamic load capacity**, brown, non-marking, non-staining.  
 Wheel centre: Made of rugged grey cast iron, wheel Ø 150 mm or larger with grease nipple, lacquered, silver.  
 Bearing type: Two pressed-in ball bearings.  
 Detailed description: Page 268, 269 and 48



Swivel castors	Fixed castors	Wheel Ø [mm]	Wheel width [mm]	Load capacity [kg]	Bearing type	Total height [mm]	Plate size [mm]	Bolt hole spacing [mm]	Bolt hole Ø [mm]	Offset swivel castor [mm]
LSD-GB 100K	BSD-GB 100K	100	2 x 40	720	Ball bearing	145	110 x 140 *	75-80 x 105	11	45
LSD-GB 128K	BSD-GB 128K	125	2 x 60	1250	Ball bearing	185	140 x 175 *	105 x 140	14	50
LSD-GB 150K-35	BSD-GB 150K-35	150	2 x 50	1350	Ball bearing	215	140 x 175 *	105 x 140	14	55
LSD-GB 200K-35	BSD-GB 200K-35	200	2 x 50	1800	Ball bearing	260	140 x 175 *	105 x 140	14	60
LSD-GB 202K	BSD-GB 202K	200	2 x 80	2800	Ball bearing	280	200 x 255 *	160 x 210	18	60
LSD-GB 250K	BSD-GB 250K	250	2 x 60	2700	Ball bearing	330	200 x 255 *	160 x 210	18	70
LSD-GB 252K	BSD-GB 252K	250	2 x 80	3200	Ball bearing	330	200 x 255 *	160 x 210	18	70
LSD-GB 302K	BSD-GB 302K	300	2 x 80	4300	Ball bearing	390	200 x 255 *	160 x 210	18	80
LSD-GB 304K		300	2 x 100	5400	Ball bearing	390	200 x 255 *	160 x 210	18	80
	BSD-GB 304K	300	2 x 100	5400	Ball bearing	390	200 x 300 *	160 x 210	18	
LSD-GB 404K-42	BSD-GB 404K-42	400	2 x 100	6800	Ball bearing	530	300 x 400 *	240 x 340	26	125
LSD-GB 504K	BSD-GB 504K	500	2 x 150	10000	Ball bearing	630	300 x 400 *	240 x 340	26	125

\* Fixed castors: Long plate side is parallel to the axle

12

**Options**



	Image with red lacquered bracket Ø 400-500 mm	With hydrolysis resistant wheel	With 'Radstop' wheel brake up to wheel Ø 200x50 mm	With 'Radstop' wheel brake, wheel Ø 200x80 mm or larger	With directional lock 2 x 180° (-RI2) / 4 x 90° (-RI4)	With directional lock 4 x 90° (hand-operated)	With steel foot guard
Technical description page		39	81	81	83	83	84
Product code suffix		<b>GSPOB series</b>	<b>-RA</b>	<b>-RAH</b>	<b>-RI2 / -RI4</b>	<b>-RI4H</b>	<b>-FS</b>
Available for		upon request	upon request	upon request	wheel Ø 100-200x50 upon request	wheel Ø 200x80 or larger upon request	upon request