

## Heavy duty wheels and castors with cast polyurethane tread **Blickle Extrathane**<sup>®</sup>



11

## Table of Contents

		L	LK/LKR	LU	LH	LHZ	LO	LS	LOD	LSD
	<b>ALTH</b> Series ALTH Wheel Ø 80 - 250 mm Load capacity 180 - 1000 kg <b>Page 246</b>									
		L-ALTH 80 - 250 mm 180 - 500 kg <b>247</b>	LK-/LKR-ALTH 80 - 200 mm 180 - 600 kg <b>248/249</b>	LU-ALTH 125 - 200 mm 450 - 750 kg <b>250</b>	LH-ALTH 80 - 250 mm 180 - 900 kg <b>251</b>	LHZ-ALTH 125 - 200 mm 450 - 800 kg <b>252</b>	LO-ALTH 125 - 250 mm 450 - 1000 kg <b>253</b>		LOD-ALTH 100 mm 600 kg <b>264</b>	
	<b>SETH</b> Series SETH Wheel Ø 125 - 250 mm Load capacity 500 - 1350 kg <b>Page 254</b>									
					LH-SETH 125 - 250 mm 500 - 900 kg <b>255</b>		LO-SETH 125 - 250 mm 500 - 1200 kg <b>256</b>	LS-SETH 125 - 250 mm 500 - 1350 kg <b>257</b>		
	<b>VSTH/GTH</b> Series VSTH/GTH Wheel Ø 35 - 1000 mm Load capacity 100 - 30000 kg <b>Page 258/259</b>									
				LU-GTH 125 - 200 mm 600 - 750 kg <b>260</b>	LH-VSTH/-GTH 60 - 250 mm 280 - 900 kg <b>261</b>		LO-GTH 125 - 250 mm 600 - 1200 kg <b>262</b>	LS-GTH 125 - 600 mm 600 - 12000 kg <b>263</b>	LOD-VSTH/-GTH 75 - 125 mm 500 - 900 kg <b>264</b>	LSD-VSTH/-GTH 80 - 500 mm 520 - 10000 kg <b>265</b>

Series: ALTH

## Heavy duty wheels with Blickle Extrathane® polyurethane tread, with aluminium wheel centre

180 - 1000 kg

RoHS



<b>Tread &amp; tyre hardness</b>	92° shore A
<b>Temperature resistance</b>	-25° C - +70° C temporarily up to +90° C
<b>Rolling resistance</b>	very good
<b>Operating noise</b>	good
<b>Floor surface preservation</b>	good



### ALTH-wheel series:

**Tread:** Made of high-quality, reaction-injected polyurethane-elastomer Blickle Extrathane®, 92° shore A hardness, low-noise operation, low rolling resistance, good floor preservation, high abrasion resistance, high cut and tear propagation resistance, colour light brown, non-marking, non-staining, very good chemical connection with the wheel centre.

(Material description page 39)

**Wheel centre:** Made of die-cast aluminium.

#### Bearing type:

- Ball bearing: Two pressed-in ball bearings, lubricated with long-life grease.

#### Other features:

High chemical resistance to many aggressive substances (table page 36-37).

Operating temperature: -25° C to +70° C, temporarily up to +90° C.

At ambient temperatures above +40° C the load capacity is reduced.

Maintenance-free under standard conditions.

**Wheel series overview page 48**

Wheels	Wheel Ø (D) [mm]	Wheel width (T2) [mm]	Load capacity [kg]	Bearing type	Axle bore Ø (d) [mm]	Hub length (T1) [mm]
ALTH 80/15K	80	30	180	Ball bearing	15	35
ALTH 100/15K	100	40	250	Ball bearing	15	45
ALTH 101/15K *	100	40	350	Ball bearing	15	40
ALTH 125/15K	125	40	350	Ball bearing	15	45
ALTH 127/20K	125	54	450	Ball bearing	20	60
ALTH 140/20K	140	54	500	Ball bearing	20	60
ALTH 151/15K	150	40	400	Ball bearing	15	60
ALTH 150/20K	150	50	500	Ball bearing	20	60
ALTH 160/20K	160	50	550	Ball bearing	20	60
ALTH 180/20K	180	50	600	Ball bearing	20	60
ALTH 200/20K	200	50	800	Ball bearing	20	60
ALTH 200/25K	200	50	800	Ball bearing	25	60
ALTH 250/25K	250	60	1000	Ball bearing	25	70

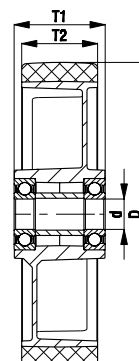
\* Heavy design

11

### Options



	Antistatic version, non-marking grey	With extra crowned running tread
Technical description page	36, 39	
Product code suffix	-AS	-CO
Available for	all sizes except wheel Ø 140 mm	upon request

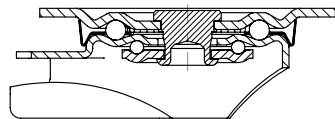
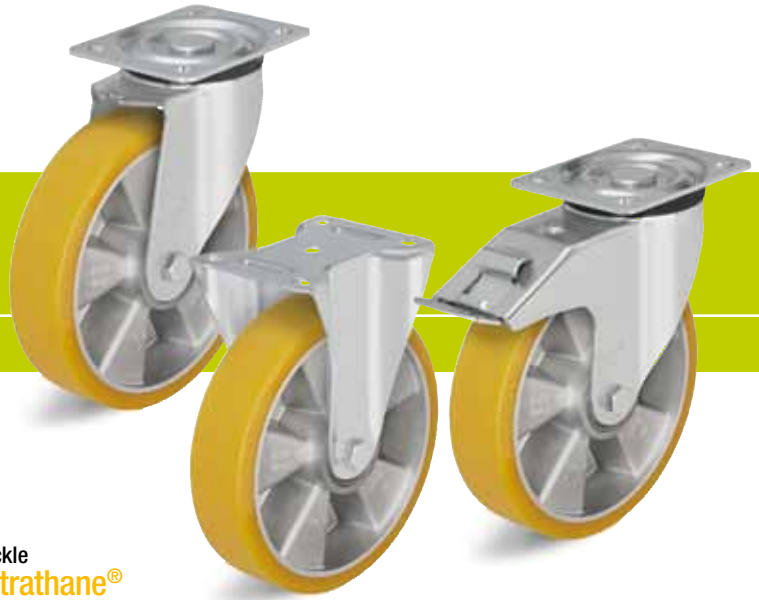


Series: L-ALTH, B-ALTH, BH-ALTH

**Pressed steel castors, medium duty brackets, with top plate fitting, wheel with Blickle Extrathane® polyurethane tread**

180 - 500 kg

RoHS



**Brackets:** L/B/BH series - Made of pressed steel, swivel bracket with double ball bearing in the swivel head, strong central kingpin (wheel Ø 150-250 mm), swivel head seals. The special Blickle dynamic riveting process of the swivel head results in minimal swivel head play and smooth rolling characteristics with an increased service life achieved by the work hardening of the ball race grooves. Bolted wheel axle. Zinc-plated, blue-passivated, Cr6-free. Bracket overview: Page 65 Top plate drawings: Page 77 Wheel and swivel head 'stop-fix' brake: Page 80

**Wheels:** ALTH series - Tread: Made of high-quality polyurethane-elastomer Blickle Extrathane®, 92° shore A, light brown, non-marking, non-staining. Wheel centre: Made of die-cast aluminium. Bearing type: Two pressed-in ball bearings. Detailed description: Page 246 and 48



Swivel castors	Fixed castors	Swivel castors with 'stop-fix' brake	Wheel Ø [mm]	Wheel width [mm]	Load capacity [kg]	Bearing type	Total height [mm]	Plate size [mm]	Bolt hole spacing [mm]	Bolt hole Ø [mm]	Offset swivel castor [mm]
L-ALTH 80K	B-ALTH 80K	L-ALTH 80K-FI	80	30	180	Ball bearing	102	100 x 85	80 x 60	9	38
L-ALTH 100K	B-ALTH 100K	L-ALTH 100K-FI	100	40	200	Ball bearing	125	100 x 85	80 x 60	9	36
L-ALTH 125K	B-ALTH 125K	L-ALTH 125K-FI	125	40	200	Ball bearing	150	100 x 85	80 x 60	9	40
L-ALTH 151K	B-ALTH 151K	L-ALTH 151K-FI	150	40	400	Ball bearing	190	140 x 110	105 x 75-80	11	60
L-ALTH 150K	B-ALTH 150K	L-ALTH 150K-FI	150	50	400	Ball bearing	190	140 x 110	105 x 75-80	11	60
L-ALTH 160K	B-ALTH 160K	L-ALTH 160K-FI	160	50	400	Ball bearing	195	140 x 110	105 x 75-80	11	60
L-ALTH 180K	B-ALTH 180K	L-ALTH 180K-FI	180	50	400	Ball bearing	215	140 x 110	105 x 75-80	11	60
L-ALTH 200K	B-ALTH 200K	L-ALTH 200K-FI	200	50	400	Ball bearing	235	140 x 110	105 x 75-80	11	65
L-ALTH 250K-3	BH-ALTH 250K	*	250	60	500	Ball bearing	295	140 x 110	105 x 75-80	11	77

\* For the 'stop-top' brake version refer to 'Options'

11

**Options**



	Antistatic version, non-marking grey	With extra crowned running tread	With 'stop-top' brake	With central braking system 'central-stop'	Directional lock (retro fit) 1 x 360° **	Directional lock (retro fit) 1 x 360° **	With synthetic (-FP) or steel (-FS) foot guard
Technical description page	36, 39		80	81	83	83	84
Product code suffix	-AS	-CO	-ST	-CS11	RI-03.01	RI-05.03	-FP / -FS
Available for	all sizes	upon request	all sizes	wheel Ø 160+200 mm	wheel Ø 100-125 mm	wheel Ø 150-200 mm	upon request

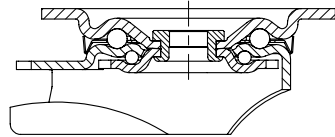
\*\* Only for swivel castors without brake

Series: LK-ALTH, BK-ALTH, BH-ALTH

## Pressed steel castors, medium heavy duty brackets, with top plate fitting, wheel with Blickle Extrathane® polyurethane tread

180 - 600 kg

✓RoHS



**Brackets:** LK/BK/BH series - Made of heavy pressed steel, swivel bracket with double ball bearing in the swivel head, strong central kingpin (wheel Ø 125x54 - 200 mm), swivel head seals. The special Blickle dynamic riveting process of the swivel head results in minimal swivel head play and smooth rolling characteristics with an increased service life achieved by the work hardening of the ball race grooves. Bolted wheel axle. Zinc-plated, blue-passivated, Cr6-free. Bracket overview: Page 66 Top plate drawings: Page 77 Wheel and swivel head 'stop-fix' brake: Page 80

**Wheels:** ALTH series - Tread: Made of high-quality polyurethane-elastomer Blickle Extrathane®, 92° shore A, light brown, non-marking, non-staining. Wheel centre: Made of die-cast aluminium. Bearing type: Two pressed-in ball bearings. Detailed description: Page 246 and 48



Swivel castors	Fixed castors	Swivel castors with 'stop-fix' brake	Wheel Ø [mm]	Wheel width [mm]	Load capacity [kg]	Bearing type	Total height [mm]	Plate size [mm]	Bolt hole spacing [mm]	Bolt hole Ø [mm]	Offset swivel castor [mm]
LK-ALTH 80K	BK-ALTH 80K	LK-ALTH 80K-FI	80	30	180	Ball bearing	110	100 x 85	80 x 60	9	40
LK-ALTH 100K-1	BK-ALTH 100K-1	LK-ALTH 100K-1-FI	100	40	250	Ball bearing	130	100 x 85	80 x 60	9	45
LK-ALTH 100K-3	BK-ALTH 100K-3	LK-ALTH 100K-3-FI	100	40	250	Ball bearing	130	140 x 110	105 x 75-80	11	45
LK-ALTH 125K-1	BK-ALTH 125K-1	LK-ALTH 125K-1-FI	125	40	350	Ball bearing	155	100 x 85	80 x 60	9	48
LK-ALTH 125K-3	BK-ALTH 125K-3	LK-ALTH 125K-3-FI	125	40	350	Ball bearing	155	140 x 110	105 x 75-80	11	48
LK-ALTH 127K	BH-ALTH 127K	LK-ALTH 127K-FI	125	54	450	Ball bearing	170	140 x 110	105 x 75-80	11	55
LK-ALTH 150K	BH-ALTH 150K	LK-ALTH 150K-FI	150	50	500	Ball bearing	197	140 x 110	105 x 75-80	11	63
LK-ALTH 160K	BH-ALTH 160K	LK-ALTH 160K-FI	160	50	550	Ball bearing	202	140 x 110	105 x 75-80	11	63
LK-ALTH 180K	BH-ALTH 180K	LK-ALTH 180K-FI	180	50	600	Ball bearing	223	140 x 110	105 x 75-80	11	65
LK-ALTH 200K	BH-ALTH 200K	LK-ALTH 200K-FI	200	50	600	Ball bearing	245	140 x 110	105 x 75-80	11	65

11



Options	Antistatic version, non-marking grey	With extra crowned running tread	With 'stop-top' brake	With central braking system 'central-stop'	With 'ideal-stop' brake tti. height +17mm *	Directional lock (retro-fit) 1 x 360°	With steel foot guard
Technical description page	36, 39		80	81	80	83	84
Product code suffix	-AS	-CO	-ST	-CS11	-IS	refer to **	-FS
Available for	all sizes	upon request	all sizes	wheel Ø 100 - 125x40 mm	Ø 100, 125, 160, 200 with plate 140x110	for wheel Ø and plate dimensions refer to **	upon request

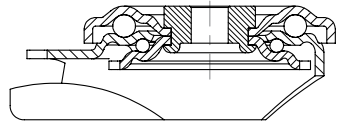
\* Matching synthetic adapter plate for total height compensation for swivel and fixed castors without 'ideal-stop' brake: **Product code AP3**  
 \*\* **RI-05.01** available for wheel Ø 80 - 125 mm with plate 100x85 mm, **RI-03.03** available for wheel Ø 100 - 125x40 mm with plate 140x110 mm, **RI-05.03** available for wheel Ø 125x54 - 200 mm (only for swivel castors without brake)

Series: LKR-ALTH

**Pressed steel castors, medium heavy duty brackets, with bolt hole fitting, wheel with Blickle Extrathane® polyurethane tread**

180 - 350 kg

RoHS



**Brackets:** LKR series - Made of heavy pressed steel, with double ball bearing in the swivel head, strong central kingpin, ball protection by the special top plate and ball disc design. The special Blickle dynamic riveting process of the swivel head results in minimal swivel head play and smooth rolling characteristics with an increased service life achieved by the work hardening of the ball race grooves. Bolted wheel axle. Zinc-plated, blue-passivated, Cr6-free. Bracket overview: Page 66 Wheel and swivel head 'stop-fix' brake: Page 80

**Wheels:** ALTH series - Tread: Made of high-quality polyurethane-elastomer Blickle Extrathane®, 92° shore A, light brown, non-marking, non-staining. Wheel centre: Made of die-cast aluminium. Bearing type: Two pressed-in ball bearings. Detailed description: Page 246 and 48



Swivel castors	Swivel castors with 'stop-fix' brake	Wheel Ø [mm]	Wheel width [mm]	Load capacity [kg]	Bearing type	Total height [mm]	Plate Ø [mm]	Bolt hole Ø [mm]	Offset [mm]
LKR-ALTH 80K	LKR-ALTH 80K-FI	80	30	180	Ball bearing	110	88	13	40
LKR-ALTH 100K	LKR-ALTH 100K-FI	100	40	250	Ball bearing	130	88	13	45
LKR-ALTH 125K	LKR-ALTH 125K-FI	125	40	350	Ball bearing	155	88	13	48

**Options**



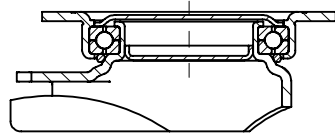
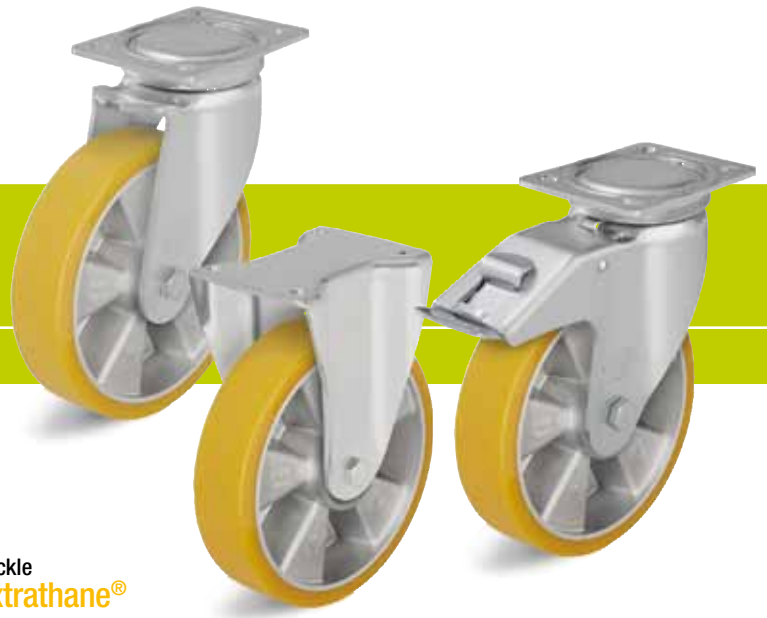
Antistatic version, non-marking grey	With extra crowned running tread
Technical description page	36, 39
Product code suffix	-AS      -CO
Available for	all sizes      upon request

Series: LU-ALTH, BH-ALTH

**Pressed steel castors, closed medium heavy duty brackets, top plate fitting, wheel with Blickle Extrathane® polyurethane tread**

450 - 750 kg

RoHS



**Brackets:** LU/BH series - Made of heavy pressed steel, swivel bracket with four-point contact ball bearing in the swivel head for optimal absorption of vertical and horizontal forces, closed sealed swivel head. The use of hardened bearing seats in conjunction with the special Blickle dynamic riveting process provides increased protection against shocks and impact loads and results in smooth rolling characteristics, low abrasion and an increased service life. Bolted wheel axle.  
Zinc-plated, blue-passivated, Cr6-free.  
Bracket overview: Page 66  
Top plate drawings: Page 77  
Wheel and swivel head 'stop-fix' brake: Page 80

**Wheels:** ALTH series - Tread: Made of high-quality polyurethane-elastomer Blickle Extrathane®, 92° shore A, light brown, non-marking, non-staining.  
Wheel centre: Made of die-cast aluminium.  
Bearing type: Two pressed-in ball bearings.  
Detailed description: Page 246 and 48



Swivel castors	Fixed castors	Swivel castors with 'stop-fix' brake	Wheel Ø [mm]	Wheel width [mm]	Load capacity [kg]	Bearing type	Total height [mm]	Plate size [mm]	Bolt hole spacing [mm]	Bolt hole Ø [mm]	Offset swivel castor [mm]
LU-ALTH 127K	BH-ALTH 127K	LU-ALTH 127K-FI	125	54	450	Ball bearing	170	140 x 110	105 x 75-80	11	55
LU-ALTH 150K	BH-ALTH 150K	LU-ALTH 150K-FI	150	50	500	Ball bearing	197	140 x 110	105 x 75-80	11	61
LU-ALTH 160K	BH-ALTH 160K	LU-ALTH 160K-FI	160	50	550	Ball bearing	202	140 x 110	105 x 75-80	11	61
LU-ALTH 200K	BH-ALTH 200K	LU-ALTH 200K-FI	200	50	750	Ball bearing	245	140 x 110	105 x 75-80	11	63

11

**Options**



	Antistatic version, non-marking grey	With extra crowned running tread	Directional lock (retro fit) 1 x 360° *	With steel foot guard
Technical description page	36, 39		83	84
Product code suffix	-AS	-CO	RI-05.03	-FS
Available for	all sizes	upon request	all sizes	upon request

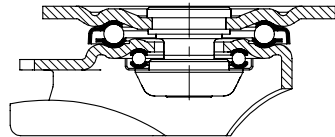
\* Only for swivel castors without brake

Series: LH-ALTH, BH-ALTH

**Pressed steel castors, heavy duty brackets, with top plate fitting, wheel with Blickle Extrathane® polyurethane tread**

180 - 900 kg

RoHS



**Brackets:** LH/BH series - Made of heavy pressed steel, swivel bracket with heavy fork and top plate, very strong bolted and secured central kingpin, double ball bearing in the swivel head, additionally reinforced by the integration of **four specially shaped and hardened bearing seats** resulting in a very high resistance to shock and impact loads.

Bolted wheel axle.

Zinc-plated, blue-passivated, Cr6-free.

Bracket overview: Page 66

Top plate drawings: Page 77

Wheel and swivel head 'stop-fix' brake: Page 80

**Wheels:** ALTH series - Tread: Made of high-quality polyurethane-elastomer Blickle Extrathane®, 92° shore A, light brown, non-marking, non-staining.

Wheel centre: Made of die-cast aluminium.

Bearing type: Two pressed-in ball bearings.

Detailed description: Page 246 and 48

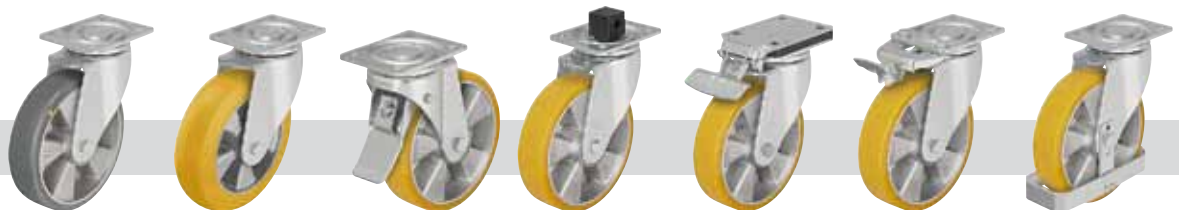


Swivel castors	Fixed castors	Swivel castors with 'stop-fix' brake	Wheel Ø [mm]	Wheel width [mm]	Load capacity [kg]	Bearing type	Total height [mm]	Plate size [mm]	Bolt hole spacing [mm]	Bolt hole Ø [mm]	Offset swivel castor [mm]
LH-ALTH 80K	BH-ALTH 80K	LH-ALTH 80K-FI	80	30	180	Ball bearing	120	100 x 85	80 x 60	9	45
LH-ALTH 100K-1	BH-ALTH 100K-1	LH-ALTH 100K-1-FI	100	40	250	Ball bearing	140	100 x 85	80 x 60	9	45
LH-ALTH 100K-3	BH-ALTH 100K-3	LH-ALTH 100K-3-FI	100	40	250	Ball bearing	140	140 x 110	105 x 75-80	11	45
LH-ALTH 101K-1 *	BH-ALTH 101K-1 *	LH-ALTH 101K-1-FI *	100	40	350	Ball bearing	140	100 x 85	80 x 60	9	45
LH-ALTH 101K-3 *	BH-ALTH 101K-3 *	LH-ALTH 101K-3-FI *	100	40	350	Ball bearing	140	140 x 110	105 x 75-80	11	45
LH-ALTH 125K-1	BH-ALTH 125K-1	LH-ALTH 125K-1-FI	125	40	350	Ball bearing	165	100 x 85	80 x 60	9	45
LH-ALTH 125K-3	BH-ALTH 125K-3	LH-ALTH 125K-3-FI	125	40	350	Ball bearing	165	140 x 110	105 x 75-80	11	45
LH-ALTH 127K	BH-ALTH 127K	LH-ALTH 127K-FI	125	54	450	Ball bearing	170	140 x 110	105 x 75-80	11	55
LH-ALTH 150K	BH-ALTH 150K	LH-ALTH 150K-FI	150	50	500	Ball bearing	197	140 x 110	105 x 75-80	11	65
LH-ALTH 160K	BH-ALTH 160K	LH-ALTH 160K-FI	160	50	550	Ball bearing	202	140 x 110	105 x 75-80	11	65
LH-ALTH 180K	BH-ALTH 180K	LH-ALTH 180K-FI	180	50	600	Ball bearing	223	140 x 110	105 x 75-80	11	67
LH-ALTH 200K	BH-ALTH 200K	LH-ALTH 200K-FI	200	50	800	Ball bearing	245	140 x 110	105 x 75-80	11	70
LH-ALTH 250K	BH-ALTH 250K	**	250	60	900	Ball bearing	295	140 x 110	105 x 75-80	11	82

\* Heavy wheel design

\*\* For the 'stop-top' brake version refer to 'Options'

**Options**



	Antistatic version, non-marking grey	With extra crowned running tread	With 'stop-top' brake	With central braking system 'central-stop'	With 'ideal-stop' brake tti. height +17mm ***	Directional lock (retro-fit) 1 x 360°	With steel foot guard
Technical description page	36, 39		80	81	80	83	84
Product code suffix	-AS	-CO	-ST	-CS13	-IS	refer to ****	-FS
Available for	all sizes	upon request	all sizes	wheel Ø 125x54, 160, 200, 250 mm	wheel Ø 125x54, 160, 200, 250 mm	for wheel Ø and plate dim. refer to ****	upon request

\*\*\* Matching synthetic adapter plate for total height compensation for swivel and fixed castors without 'ideal-stop' brake: **Product code AP3**

\*\*\*\* **RI-04.01** available for wheel Ø 80 - 125 mm with plate 100x85 mm, **RI-04.03** available for wheel Ø 100 - 125x40 mm with plate 140x110 mm, **RI-05.03** available for wheel Ø 125x54 - 200 mm (only for swivel castors without brake)

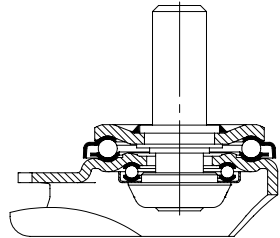
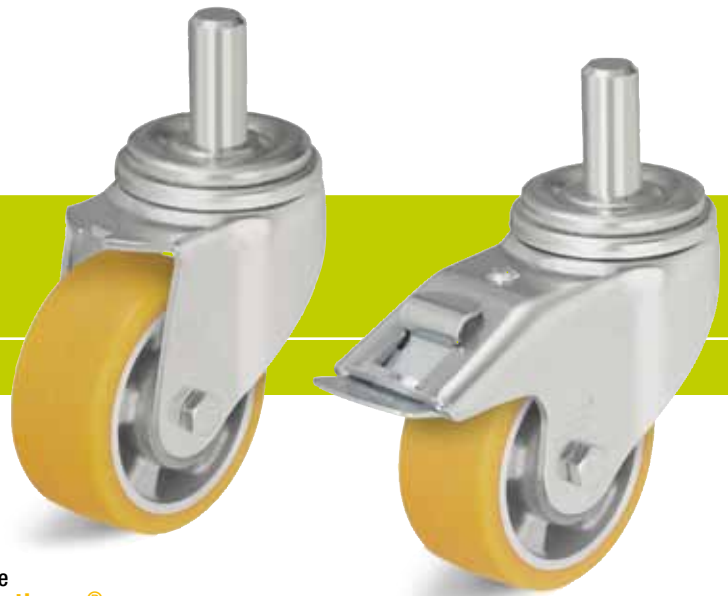


Series: LHZ-ALTH

**Pressed steel castors, heavy duty brackets, with stem fitting, wheel with Blickle Extrathane® polyurethane tread**

450 - 800 kg

RoHS



**Brackets:** LHZ series - Made of heavy pressed steel, with heavy fork and top plate, very strong bolted and secured welded steel plug-in stem, double ball bearing in the swivel head, additionally reinforced by the integration of **four specially shaped and hardened bearing seats** resulting in a very high resistance to shock and impact loads.

Bolted wheel axle.

Zinc-plated, blue-passivated, Cr6-free.

Bracket overview: Page 67

Wheel and swivel head 'stop-fix' brake: Page 80

**Wheels:** ALTH series - Tread: Made of high-quality polyurethane-elastomer Blickle Extrathane®, 92° shore A, light brown, non-marking, non-staining.

Wheel centre: Made of die-cast aluminium.

Bearing type: Two pressed-in ball bearings.

Detailed description: Page 246 and 48



Swivel castors	Swivel castors with 'stop-fix' brake	Wheel Ø [mm]	Wheel width [mm]	Load capacity [kg]	Bearing type	Total height [mm]	Stem Ø [mm]	Stem length [mm]	Offset [mm]
LHZ-ALTH 127K	LHZ-ALTH 127K-FI	125	54	450	Ball bearing	170	27	60	55
LHZ-ALTH 160K	LHZ-ALTH 160K-FI	160	50	550	Ball bearing	202	27	60	65
LHZ-ALTH 200K	LHZ-ALTH 200K-FI	200	50	800	Ball bearing	245	27	60	70

**Options**



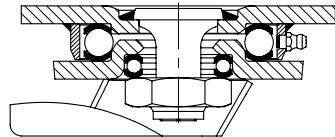
	Antistatic version, non-marking grey	With extra crowned running tread	With 'stop-top' brake	With steel foot guard
Technical description page	36, 39		80	84
Product code suffix	-AS	-CO	-ST	-FS
Available for	all sizes	upon request	all sizes	upon request

Series: LO-ALTH, BO-ALTH

## Welded steel heavy duty castors, wheel with Blickle Extrathane® polyurethane tread

450 - 1000 kg

RoHS



**Brackets:** LO/BO series - Sturdy welded steel construction, swivel bracket with double ball bearing in the swivel head, additionally reinforced by the integration of **four specially shaped and hardened bearing seats**, swivel head seal with labyrinth design, fitted grease nipple, bolted and secured with a welded very strong central kingpin.  
Bolted wheel axle.  
Zinc-plated, blue-passivated, Cr6-free.  
Bracket overview: Page 67  
Top plate drawings: Page 77  
Wheel and swivel head 'stop-top' brake: Page 80

**Wheels:** ALTH series - Tread: Made of high-quality polyurethane-elastomer Blickle Extrathane®, 92° shore A, light brown, non-marking, non-staining.  
Wheel centre: Made of die-cast aluminium.  
Bearing type: Two pressed-in ball bearings.  
Detailed description: Page 246 and 48



Swivel castors	Fixed castors	Swivel castors with 'stop-top' brake	Wheel Ø [mm]	Wheel width [mm]	Load capacity [kg]	Bearing type	Total height [mm]	Plate size [mm]	Bolt hole spacing [mm]	Bolt hole Ø [mm]	Offset swivel castor [mm]
LO-ALTH 127K	BO-ALTH 127K	LO-ALTH 127K-ST	125	54	450	Ball bearing	170	140 x 110	105 x 75-80	11	50
LO-ALTH 150K	BO-ALTH 150K	LO-ALTH 150K-ST	150	50	500	Ball bearing	200	140 x 110	105 x 75-80	11	55
LO-ALTH 160K	BO-ALTH 160K	LO-ALTH 160K-ST	160	50	550	Ball bearing	205	140 x 110	105 x 75-80	11	55
LO-ALTH 200K	BO-ALTH 200K	LO-ALTH 200K-ST	200	50	800	Ball bearing	245	140 x 110	105 x 75-80	11	60
LO-ALTH 250K	BO-ALTH 250K	LO-ALTH 250K-ST	250	60	1000	Ball bearing	295	140 x 110	105 x 75-80	11	70

11

### Options



	Antistatic version, non-marking grey	With extra crowned running tread	With directional lock 2 x 180°	With directional lock 4 x 90°	With steel foot guard	Truck lock
Technical description page	36, 39		83	83	84	82, 483
Product code suffix	-AS	-CO	-RI2	-RI4	-FS	FF 125/150/160/200
Available for	all sizes	upon request	wheel Ø 125-200 mm	wheel Ø 125-200 mm	upon request	wheel Ø 125-200 mm

Series: SETH

## Heavy duty wheels with Blickle Extrathane® polyurethane tread, with welded steel wheel centre

500 - 1350 kg

RoHS



<b>Tread &amp; tyre hardness</b>	92° shore A
<b>Temperature resistance</b>	-25° C - +70° C temporarily up to +90° C
<b>Rolling resistance</b>	very good
<b>Operating noise</b>	good
<b>Floor surface preservation</b>	good



### SETH-wheel series:

**Tread:** Made of high-quality, reaction-injected polyurethane-elastomer Blickle Extrathane®, 92° shore A hardness, low-noise operation, low rolling resistance, good floor preservation, high abrasion resistance, high cut and tear propagation resistance, colour light brown, non-marking, non-staining, very good chemical connection with the wheel centre.

(Material description page 39)

**Wheel centre:** Made of pressed thick-walled steel, triple-welded, with tubular steel hub, resistant to dirt, shocks and impacts, elegant and smooth design, lacquered, colour silver grey.

### Bearing type:

- Ball bearing: Two pressed-in ball bearings, lubricated with long-life grease.

### Other features:

High chemical resistance to many aggressive substances (table page 36-37).

Operating temperature: -25° C to +70° C, temporarily up to +90° C.

At ambient temperatures above +40° C the load capacity is reduced.

Maintenance-free under standard conditions.

**Wheel series overview page 48**

Wheels	Wheel Ø (D) [mm]	Wheel width (T2) [mm]	Load capacity [kg]	Bearing type	Axle bore Ø (d) [mm]	Hub length (T1) [mm]
SETH 125/20K	125	50	500	Ball bearing	20	60
SETH 150/20K	150	50	650	Ball bearing	20	60
SETH 150/25K	150	50	650	Ball bearing	25	60
SETH 160/20K	160	50	700	Ball bearing	20	60
SETH 160/25K	160	50	700	Ball bearing	25	60
SETH 200/20K	200	50	1000	Ball bearing	20	60
SETH 200/25K	200	50	1000	Ball bearing	25	60
SETH 250/25K	250	60	1350	Ball bearing	25	70

11

### Options

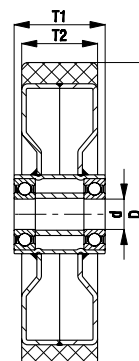


With grease nipple

Technical description page

**Product code suffix** -NI

Available for upon request

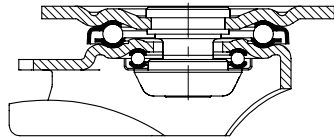


Series: LH-SETH, BH-SETH

**Pressed steel castors, heavy duty brackets, with top plate fitting, wheel with Blickle Extrathane® polyurethane tread**

500 - 900 kg

RoHS



**Brackets:** LH/BH series - Made of heavy pressed steel, swivel bracket with heavy fork and top plate, very strong bolted and secured central kingpin, double ball bearing in the swivel head, additionally reinforced by the integration of **four specially shaped and hardened bearing seats** resulting in a very high resistance to shock and impact loads.  
 Bolted wheel axle.  
 Zinc-plated, blue-passivated, Cr6-free.  
 Bracket overview: Page 66  
 Top plate drawings: Page 77  
 Wheel and swivel head 'stop-fix' brake: Page 80

**Wheels:** SETH series - Tread: Made of high-quality polyurethane-elastomer Blickle Extrathane®, 92° shore A, light brown, non-marking, non-staining.  
 Wheel centre: Made of pressed steel, with tubular steel hub, lacquered, silver.  
 Bearing type: Two pressed-in ball bearings.  
 Detailed description: Page 254 and 48



Swivel castors	Fixed castors	Swivel castors with 'stop-fix' brake	Wheel Ø [mm]	Wheel width [mm]	Load capacity [kg]	Bearing type	Total height [mm]	Plate size [mm]	Bolt hole spacing [mm]	Bolt hole Ø [mm]	Offset swivel castor [mm]
LH-SETH 125K	BH-SETH 125K	LH-SETH 125K-FI	125	50	500	Ball bearing	170	140 x 110	105 x 75-80	11	55
LH-SETH 150K	BH-SETH 150K	LH-SETH 150K-FI	150	50	650	Ball bearing	197	140 x 110	105 x 75-80	11	65
LH-SETH 160K	BH-SETH 160K	LH-SETH 160K-FI	160	50	700	Ball bearing	202	140 x 110	105 x 75-80	11	65
LH-SETH 200K	BH-SETH 200K	LH-SETH 200K-FI	200	50	900	Ball bearing	245	140 x 110	105 x 75-80	11	70
LH-SETH 250K	BH-SETH 250K	*	250	60	900	Ball bearing	295	140 x 110	105 x 75-80	11	82

\* For the 'stop-top' brake version refer to 'Options'

11

**Options**



	With 'stop-top' brake	With 'ideal-stop' brake ttl. height +17mm **	Directional lock (retro fit) 1 x 360° ***	With steel foot guard	Truck lock
Technical description page	80	80	83	84	82, 483
Product code suffix	-ST	-IS	RI-05.03	-FS	FF 125/150/160/200
Available for	all sizes	wheel Ø 125, 160 - 250 mm	wheel Ø 125-200 mm	upon request	wheel Ø 125-200 mm

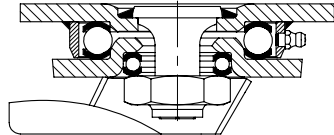
\*\* Matching synthetic adapter plate for total height compensation for swivel and fixed castors without 'ideal-stop' brake: **Product code AP3**  
 \*\*\* Only for swivel castors without brake

Series: LO-SETH, BO-SETH

**Welded steel heavy duty castors,  
wheel with Blickle Extrathane®  
polyurethane tread**

500 - 1200 kg

RoHS



**Brackets:** LO/BO series - Sturdy welded steel construction, swivel bracket with double ball bearing in the swivel head, additionally reinforced by the integration of **four specially shaped and hardened bearing seats**, swivel head seal with labyrinth design, fitted grease nipple, bolted and secured with a welded very strong central kingpin. Bolted wheel axle. Zinc-plated, blue-passivated, Cr6-free. Bracket overview: Page 67 Top plate drawings: Page 77 Wheel and swivel head 'stop-top' brake: Page 80

**Wheels:** SETH series - Tread: Made of high-quality polyurethane-elastomer Blickle Extrathane®, 92° shore A, light brown, non-marking, non-staining. Wheel centre: Made of pressed steel, with tubular steel hub, lacquered, silver. Bearing type: Two pressed-in ball bearings. Detailed description: Page 254 and 48



Swivel castors	Fixed castors	Swivel castors with 'stop-top' brake	Wheel Ø [mm]	Wheel width [mm]	Load capacity [kg]	Bearing type	Total height [mm]	Plate size [mm]	Bolt hole spacing [mm]	Bolt hole Ø [mm]	Offset swivel castor [mm]
LO-SETH 125K	BO-SETH 125K	LO-SETH 125K-ST	125	50	500	Ball bearing	170	140 x 110	105 x 75-80	11	50
LO-SETH 150K	BO-SETH 150K	LO-SETH 150K-ST	150	50	650	Ball bearing	200	140 x 110	105 x 75-80	11	55
LO-SETH 160K	BO-SETH 160K	LO-SETH 160K-ST	160	50	700	Ball bearing	205	140 x 110	105 x 75-80	11	55
LO-SETH 200K	BO-SETH 200K	LO-SETH 200K-ST	200	50	1000	Ball bearing	245	140 x 110	105 x 75-80	11	60
LO-SETH 250K	BO-SETH 250K	LO-SETH 250K-ST	250	60	1200	Ball bearing	295	140 x 110	105 x 75-80	11	70

**Options**

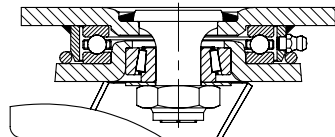


	With directional lock 2 x 180°	With directional lock 4 x 90°	With steel foot guard	Truck lock
Technical description page	83	83	84	82, 483
Product code suffix	-RI2	-RI4	-FS	FF 125/150/160/200
Available for	wheel Ø 125-200 mm	wheel Ø 125-200 mm	upon request	wheel Ø 125-200 mm

Series: LS-SETH, BS-SETH

**Welded steel heavy duty castors, strong swivel head design, wheel with Blickle Extrathane® polyurethane tread**

500 - 1350 kg RoHS



**Brackets:** LS/BS series - Particularly rugged welded steel construction, swivel bracket with axial grooved ball bearing DIN 711 and tapered roller bearing DIN 720 in the swivel head, dust and splash-proof, fitted grease nipple, bolted and secured with a welded very strong central kingpin. Bolted wheel axle. Zinc-plated, yellow-passivated, Cr6-free. Bracket overview: Page 68 Top plate drawings: Page 77 and 78 Wheel and swivel head 'stop-top' brake: Page 80

**Wheels:** SETH series - Tread: Made of high-quality polyurethane-elastomer Blickle Extrathane®, 92° shore A, light brown, non-marking, non-staining. Wheel centre: Made of pressed steel, with tubular steel hub, lacquered, silver. Bearing type: Two pressed-in ball bearings. Detailed description: Page 254 and 48



Swivel castors	Fixed castors	Swivel castors with 'stop-top' brake	Wheel Ø [mm]	Wheel width [mm]	Load capacity [kg]	Bearing type	Total height [mm]	Plate size [mm]	Bolt hole spacing [mm]	Bolt hole Ø [mm]	Offset swivel castor [mm]
LS-SETH 125K	BS-SETH 125K	LS-SETH 125K-ST	125	50	500	Ball bearing	170	140 x 110	105 x 75-80	11	50
LS-SETH 150K	BS-SETH 150K	LS-SETH 150K-ST	150	50	650	Ball bearing	200	140 x 110	105 x 75-80	11	55
LS-SETH 160K	BS-SETH 160K	LS-SETH 160K-ST	160	50	700	Ball bearing	205	140 x 110	105 x 75-80	11	55
LS-SETH 200K	BS-SETH 200K	LS-SETH 200K-ST	200	50	1000	Ball bearing	245	140 x 110	105 x 75-80	11	60
LS-SETH 250K	BS-SETH 250K	LS-SETH 250K-ST	250	60	1350	Ball bearing	305	175 x 140	140 x 105	14	75

11

**Options**



	With directional lock 2 x 180°	With directional lock 4 x 90°	With steel foot guard	Truck lock
Technical description page	83	83	84	82, 483
Product code suffix	-RI2	-RI4	-FS	FF 125/150/160/200
Available for	all sizes	all sizes	upon request	wheel Ø 125-200 mm

Series: VSTH, GTH, wheel Ø 35 - 200 mm

## Heavy duty wheels with Blickle Extrathane® polyurethane tread, with steel or cast iron wheel centre

100 - 1600 kg

RoHS



<b>Tread &amp; tyre hardness</b>	92° shore A
<b>Temperature resistance</b>	-25° C - +70° C temporarily up to +90° C
<b>Rolling resistance</b>	very good
<b>Operating noise</b>	good
<b>Floor surface preservation</b>	good



### VSTH, GTH-wheel series:

**Tread:** Made of high-quality, reaction-injected polyurethane-elastomer Blickle Extrathane®, 92° shore A hardness, low-noise operation, low rolling resistance, good floor preservation, high abrasion resistance, high cut and tear propagation resistance, colour light brown, non-marking, non-staining, very good chemical connection with the wheel centre.

(Material description page 39)

**Wheel centre:** VSTH series: Made of steel.

GTH series: Made of rugged grey cast iron, wheel Ø 150 mm or larger with grease nipple, lacquered, colour silver.

#### Bearing type:

- Ball bearing: Two pressed-in ball bearings, lubricated with long-life grease.

#### Other features:

High chemical resistance to many aggressive substances (table page 36-37).

Operating temperature: -25° C to +70° C, temporarily up to +90° C.

At ambient temperatures above +40° C the load capacity is reduced.

Maintenance-free under standard conditions.

**Wheel series overview page 48**

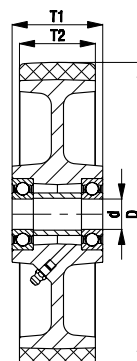
Wheels	Wheel Ø (D) [mm]	Wheel width (T2) [mm]	Load capacity [kg]	Bearing type	Axle bore Ø (d) [mm]	Hub length (T1) [mm]
VSTH 35/6K	35	27	100	Ball bearing	6	30
VSTH 50/8K	50	33	150	Ball bearing	8	36
VSTH 60/15K	60	35	200	Ball bearing	15	35
VSTH 62/10K	60	60	320	Ball bearing	10	60
VSTH 65/15K	65	40	250	Ball bearing	15	40
VSTH 75/20K	75	40	270	Ball bearing	20	40
VSTH 80/20K	80	40	280	Ball bearing	20	40
VSTH 82/20K	80	70	500	Ball bearing	20	70
GTH 100/15K	100	40	400	Ball bearing	15	40
GTH 101/20-50K	100	50	500	Ball bearing	20	50
GTH 101/20K	100	50	500	Ball bearing	20	60
GTH 125/15K	125	40	500	Ball bearing	15	45
GTH 127/20-50K	125	50	600	Ball bearing	20	50
GTH 127/20K	125	50	600	Ball bearing	20	60
GTH 127/25-50K	125	50	600	Ball bearing	25	50
GTH 140/20K	140	54	800	Ball bearing	20	60
GTH 150/20-50K	150	50	750	Ball bearing	20	50
GTH 150/20K	150	50	750	Ball bearing	20	60
GTH 160/20K	160	50	800	Ball bearing	20	60
GTH 160/25K	160	50	800	Ball bearing	25	60
GTH 175/20K	175	50	875	Ball bearing	20	60
GTH 175/25K	175	50	875	Ball bearing	25	60
GTH 177/25K	175	80	1300	Ball bearing	25	80
GTH 181/25K	180	40	800	Ball bearing	25	40
GTH 182/25K	180	65	1100	Ball bearing	25	75
GTH 200/20K	200	50	1000	Ball bearing	20	60
GTH 200/25K	200	50	1000	Ball bearing	25	60
GTH 202/25K	200	80	1600	Ball bearing	25	90
GTH 202/30K	200	80	1600	Ball bearing	30	90
GTH 202/35K	200	80	1600	Ball bearing	35	90

For further wheel Ø refer to the next page

### Options



Image	Antistatic version, non-marking grey	Drive wheels with hub keyway
Technical description page	36, 39	57
<b>Product code suffix</b>	<b>-AS</b>	<b>GTHN series</b>
Available for	upon request	refer to page 462



Series: GTH, wheel Ø 250 - 1000 mm

## Heavy duty wheels with Blickle Extrathane® polyurethane tread, with cast iron wheel centre

📦 1250 - 30000 kg    ✓RoHS



<b>Tread &amp; tyre hardness</b>	92° shore A
<b>Temperature resistance</b>	-25° C - +70° C temporarily up to +90° C
<b>Rolling resistance</b>	very good
<b>Operating noise</b>	good
<b>Floor surface preservation</b>	good



### GTH-wheel series:

**Tread:** Made of high-quality, reaction-injected polyurethane-elastomer Blickle Extrathane®, 92° shore A hardness, low-noise operation, low rolling resistance, good floor preservation, high abrasion resistance, high cut and tear propagation resistance, colour light brown, non-marking, non-staining, very good chemical connection with the wheel centre.

(Material description page 39)

**Wheel centre:** Made of rugged grey cast iron, with grease nipple, lacquered, colour silver.

### Bearing types:

- Ball bearing: Two pressed-in ball bearings, lubricated with long-life grease.
- Spherical roller bearing: Two pressed-in spherical roller bearings, sealed, extremely rugged, very durable, lubricated with long-life grease.

### Other features:

High chemical resistance to many aggressive substances (table page 36-37).

Operating temperature: -25° C to +70° C, temporarily up to +90° C.

At ambient temperatures above +40° C the load capacity is reduced.

Maintenance-free under standard conditions.

**Wheel series overview page 48**

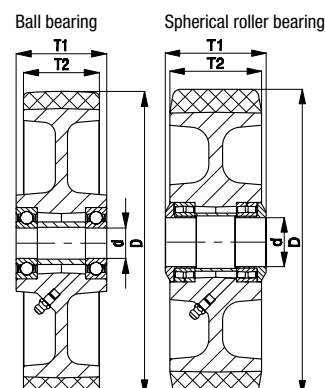
Wheels	Wheel Ø (D) [mm]	Wheel width (T2) [mm]	Load capacity [kg]	Bearing type	Axle bore Ø (d) [mm]	Hub length (T1) [mm]
GTH 251/25K	250	50	1250	Ball bearing	25	60
GTH 251/30K	250	50	1250	Ball bearing	30	60
GTH 250/25K	250	60	1500	Ball bearing	25	70
GTH 250/30K	250	60	1500	Ball bearing	30	70
GTH 252/25K	250	80	1800	Ball bearing	25	90
GTH 252/30K	250	80	1800	Ball bearing	30	90
GTH 254/40K	250	130	3000	Ball bearing	40	140
GTH 301/25K	300	45	1300	Ball bearing	25	60
GTH 300/30K	300	60	1800	Ball bearing	30	70
GTH 302/30K	300	80	2400	Ball bearing	30	90
GTH 302/35K	300	80	2400	Ball bearing	35	90
GTH 304/35K	300	100	3000	Ball bearing	35	120
GTH 360/35K	360	60	2400	Ball bearing	35	75
GTH 362/40K	360	75	2500	Ball bearing	40	90
GTH 363/40K	360	100	3600	Ball bearing	40	100
GTH 364/40K	360	120	3800	Ball bearing	40	120
GTH 400/35K	400	60	2400	Ball bearing	35	75
GTH 402/40K	400	80	3000	Ball bearing	40	90
GTH 404/40K	400	100	3800	Ball bearing	40	120
GTH 406/50K	400	125	5000	Ball bearing	50	125
GTH 500/50K	500	100	5000	Ball bearing	50	100
GTH 504/60K	500	150	7500	Ball bearing	60	150
GTH 506/80K	500	200	10000	Ball bearing	80	200
GTH 602/80K	600	150	9000	Ball bearing	80	150
GTH 604/80K	600	200	12000	Ball bearing	80	200
GTH 750/120K	750	200	15000	Ball bearing	120	200
GTH 1000/160PR	1000	300	30000	Spherical roller brg.	160	330

Further dimensions upon request

### Options



	Antistatic version, non-marking grey	Drive wheels with hub keyway
Technical description page	36, 39	57
Product code suffix	-AS	GTHN series
Available for	upon request	refer to page 463



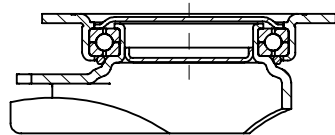
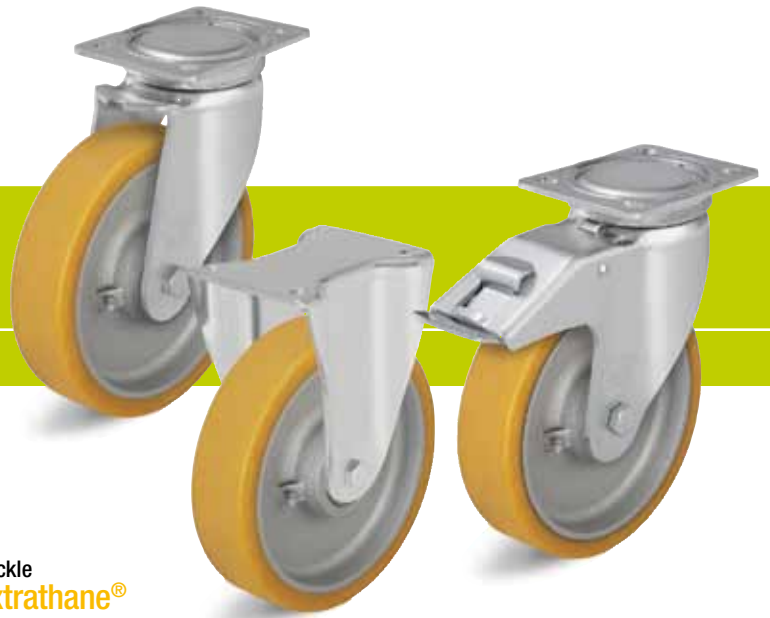


Series: LU-GTH, BH-GTH

**Pressed steel castors, closed medium heavy duty brackets, top plate fitting, wheel with Blickle Extrathane® polyurethane tread**

600 - 750 kg

RoHS



**Brackets:** LU/BH series - Made of heavy pressed steel, swivel bracket with four-point contact ball bearing in the swivel head for optimal absorption of vertical and horizontal forces, closed sealed swivel head. The use of hardened bearing seats in conjunction with the special Blickle dynamic riveting process provides increased protection against shocks and impact loads and results in smooth rolling characteristics, low abrasion and an increased service life. Bolted wheel axle.

Zinc-plated, blue-passivated, Cr6-free.

Bracket overview: Page 66

Top plate drawings: Page 77

Wheel and swivel head 'stop-fix' brake: Page 80

**Wheels:** GTH series - Tread: Made of high-quality polyurethane-elastomer Blickle Extrathane®, 92° shore A, light brown, non-marking, non-staining.

Wheel centre: Made of rugged grey cast iron, wheel Ø 150 mm or larger with grease nipple, lacquered, silver. Bearing type: Two pressed-in ball bearings.

Detailed description: Page 258 and 48



Swivel castors	Fixed castors	Swivel castors with 'stop-fix' brake	Wheel Ø [mm]	Wheel width [mm]	Load capacity [kg]	Bearing type	Total height [mm]	Plate size [mm]	Bolt hole spacing [mm]	Bolt hole Ø [mm]	Offset swivel castor [mm]
LU-GTH 127K	BH-GTH 127K	LU-GTH 127K-FI	125	50	600	Ball bearing	170	140 x 110	105 x 75-80	11	55
LU-GTH 150K	BH-GTH 150K	LU-GTH 150K-FI	150	50	750	Ball bearing	197	140 x 110	105 x 75-80	11	61
LU-GTH 160K	BH-GTH 160K	LU-GTH 160K-FI	160	50	750	Ball bearing	202	140 x 110	105 x 75-80	11	61
LU-GTH 200K	BH-GTH 200K	LU-GTH 200K-FI	200	50	750	Ball bearing	245	140 x 110	105 x 75-80	11	63

**Options**



	Antistatic version, non-marking grey	Directional lock (retro fit) 1 x 360° *	With steel foot guard
Technical description page	36, 39	83	84
Product code suffix	-AS	RI-05.03	-FS
Available for	upon request	all sizes	upon request

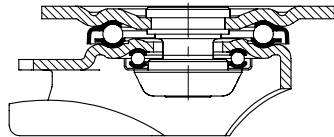
\* Only for swivel castors without brake

Series: LH-VSTH, BH-VSTH, LH-GTH, BH-GTH

**Pressed steel castors, heavy duty brackets, with top plate fitting, wheel with Blickle Extrathane® polyurethane tread**

280 - 900 kg

RoHS



**Brackets:** LH/BH series - Made of heavy pressed steel, swivel bracket with heavy fork and top plate, very strong bolted and secured central kingpin, double ball bearing in the swivel head, additionally reinforced by the integration of **four specially shaped and hardened bearing seats** resulting in a very high resistance to shock and impact loads.  
 Bolted wheel axle.  
 Zinc-plated, blue-passivated, Cr6-free.  
 Bracket overview: Page 66  
 Top plate drawings: Page 77  
 Wheel and swivel head 'stop-fix' brake: Page 80

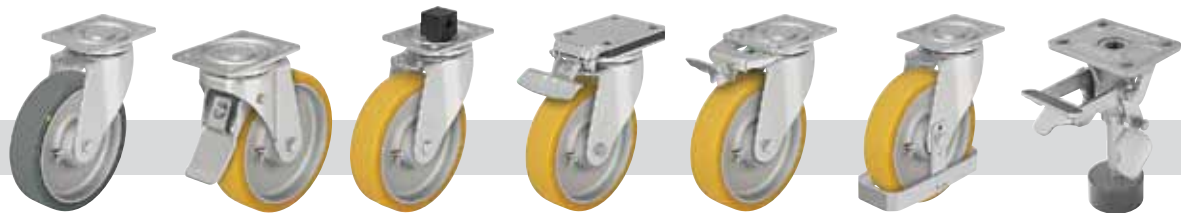
**Wheels:** VSTH/GTH series - Tread: Made of high-quality polyurethane-elastomer Blickle Extrathane®, 92° shore A, light brown, non-marking, non-staining.  
 Wheel centre: VSTH series: Made of steel.  
 GTH series: Made of rugged grey cast iron, wheel Ø 150 mm or larger with grease nipple, lacquered, silver.  
 Bearing type: Two pressed-in ball bearings.  
 Detailed description: Page 258, 259 and 48



Swivel castors	Fixed castors	Swivel castors with 'stop-fix' brake	Wheel Ø [mm]	Wheel width [mm]	Load capacity [kg]	Bearing type	Total height [mm]	Plate size [mm]	Bolt hole spacing [mm]	Bolt hole Ø [mm]	Offset swivel castor [mm]
LH-VSTH 62K			60	60	320	Ball bearing	92	100 x 85	80 x 60	9	45
LH-VSTH 80K	BH-VSTH 80K	LH-VSTH 80K-FI	80	40	280	Ball bearing	120	100 x 85	80 x 60	9	45
LH-VSTH 82K			80	70	500	Ball bearing	112	100 x 85	80 x 60	9	45
LH-GTH 100K-1	BH-GTH 100K-1	LH-GTH 100K-1-FI	100	40	400	Ball bearing	140	100 x 85	80 x 60	9	45
LH-GTH 100K-3	BH-GTH 100K-3	LH-GTH 100K-3-FI	100	40	400	Ball bearing	140	140 x 110	105 x 75-80	11	45
LH-GTH 125K-1	BH-GTH 125K-1	LH-GTH 125K-1-FI	125	40	500	Ball bearing	165	100 x 85	80 x 60	9	45
LH-GTH 125K-3	BH-GTH 125K-3	LH-GTH 125K-3-FI	125	40	500	Ball bearing	165	140 x 110	105 x 75-80	11	45
LH-GTH 127K	BH-GTH 127K	LH-GTH 127K-FI	125	50	600	Ball bearing	170	140 x 110	105 x 75-80	11	55
LH-GTH 150K	BH-GTH 150K	LH-GTH 150K-FI	150	50	750	Ball bearing	197	140 x 110	105 x 75-80	11	65
LH-GTH 160K	BH-GTH 160K	LH-GTH 160K-FI	160	50	800	Ball bearing	202	140 x 110	105 x 75-80	11	65
LH-GTH 175K	BH-GTH 175K	LH-GTH 175K-FI	175	50	875	Ball bearing	220	140 x 110	105 x 75-80	11	67
LH-GTH 200K	BH-GTH 200K	LH-GTH 200K-FI	200	50	900	Ball bearing	245	140 x 110	105 x 75-80	11	70
LH-GTH 202K	BG-GTH 202K *	**	200	80	800	Ball bearing	245	140 x 110	105 x 75-80	11	70
LH-GTH 250K	BH-GTH 250K	**	250	60	900	Ball bearing	295	140 x 110	105 x 75-80	11	82

\* Welded steel construction, for technical description refer to page 262  
 \*\* For the 'stop-top' brake version refer to 'Options'

**Options**



	Antistatic version, non-marking grey	With 'stop-top' brake	With central braking system 'central-stop'	With 'ideal-stop' brake ttl. height +17mm ***	Directional lock (retro-fit) 1 x 360°	With steel foot guard	Truck lock
Technical description page	36, 39	80	81	80	83	84	82, 483
Product code suffix	-AS	-ST	-CS13	-IS	refer to ****	-FS	FF 125/150/160/200
Available for	upon request	wheel Ø 80x40, 100 - 250 mm	wheel Ø 125x50, 160, 200x50, 250 mm	wheel Ø 125x50, 160, 200x50, 250 mm	for wheel Ø and plate dim. refer to ****	upon request	wheel Ø 125x50, 150, 160, 200 mm

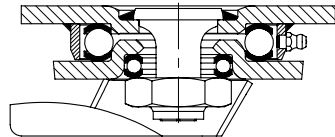
\*\*\* Matching synthetic adapter plate for total height compensation for swivel and fixed castors without 'ideal-stop' brake: **Product code AP3**  
 \*\*\*\* **RI-04.01** available for wheel Ø 80x40, 100, 125 mm with plate 100x85 mm, **RI-04.03** available for wheel Ø 100 - 125x40 mm with plate 140x110 mm, **RI-05.03** available for wheel Ø 125x50 - 200x50 mm (only for swivel castors without brake)

Series: LO-GTH, BO-GTH

## Welded steel heavy duty castors, wheel with Blickle Extrathane® polyurethane tread

600 - 1200 kg

✓RoHS



**Brackets:** LO/BO series - Sturdy welded steel construction, swivel bracket with double ball bearing in the swivel head, additionally reinforced by the integration of **four specially shaped and hardened bearing seats**, swivel head seal with labyrinth design, fitted grease nipple, bolted and secured with a welded very strong central kingpin. Bolted wheel axle. Zinc-plated, blue-passivated, Cr6-free. Bracket overview: Page 67 Top plate drawings: Page 77 Wheel and swivel head 'stop-top' brake: Page 80

**Wheels:** GTH series - Tread: Made of high-quality polyurethane-elastomer Blickle Extrathane®, 92° shore A, light brown, non-marking, non-staining. Wheel centre: Made of rugged grey cast iron, wheel Ø 150 mm or larger with grease nipple, lacquered, silver. Bearing type: Two pressed-in ball bearings. Detailed description: Page 258, 259 and 48



Swivel castors	Fixed castors	Swivel castors with 'stop-top' brake	Wheel Ø [mm]	Wheel width [mm]	Load capacity [kg]	Bearing type	Total height [mm]	Plate size [mm]	Bolt hole spacing [mm]	Bolt hole Ø [mm]	Offset swivel castor [mm]
LO-GTH 127K	BO-GTH 127K	LO-GTH 127K-ST	125	50	600	Ball bearing	170	140 x 110	105 x 75-80	11	50
LO-GTH 150K	BO-GTH 150K	LO-GTH 150K-ST	150	50	750	Ball bearing	200	140 x 110	105 x 75-80	11	55
LO-GTH 160K	BO-GTH 160K	LO-GTH 160K-ST	160	50	800	Ball bearing	205	140 x 110	105 x 75-80	11	55
LO-GTH 200K	BO-GTH 200K	LO-GTH 200K-ST	200	50	1000	Ball bearing	245	140 x 110	105 x 75-80	11	60
LO-GTH 202K	BO-GTH 202K	LO-GTH 202K-ST	200	80	1100	Ball bearing	245	140 x 110	105 x 75-80	11	65
LO-GTH 251K	BO-GTH 251K	LO-GTH 251K-ST	250	50	1200	Ball bearing	295	140 x 110	105 x 75-80	11	70
LO-GTH 250K	BO-GTH 250K	LO-GTH 250K-ST	250	60	1200	Ball bearing	295	140 x 110	105 x 75-80	11	70

### Options



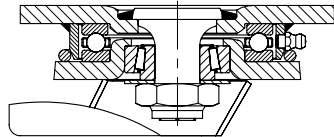
	Antistatic version, non-marking grey	With plate size 175 x 140 mm	With directional lock 2 x 180°	With directional lock 4 x 90°	With steel foot guard	Truck lock
Technical description page	36, 39	78	83	83	84	82, 483
Product code suffix	-AS	-35	-RI2	-RI4	-FS	FF 125/150/160/200
Available for	upon request	upon request	wheel Ø 125 - 200x50 mm	wheel Ø 125 - 200x50 mm	upon request	wheel Ø 125-200 mm

Series: LS-GTH, BS-GTH

**Welded steel heavy duty castors, strong swivel head design, wheel with Blickle Extrathane® polyurethane tread**

600 - 12000 kg

RoHS



**Brackets:** LS/BS series - Particularly rugged welded steel construction, swivel bracket with axial grooved ball bearing DIN 711 and tapered roller bearing DIN 720 in the swivel head, dust and splash-proof, fitted grease nipple, bolted and secured with a welded very strong central kingpin. Bolted wheel axle.  
 Wheel Ø 125-400 mm: Zinc-plated, yellow-passivated, Cr6-free.  
 Wheel Ø 500-600 mm: Lacquered, red.  
 Bracket overview: Page 68  
 Top plate drawings: Page 77 and 78  
 Wheel and swivel head 'stop-top' brake: Page 80

**Wheels:** GTH series - Tread: Made of high-quality polyurethane-elastomer Blickle Extrathane®, 92° shore A, light brown, non-marking, non-staining.  
 Wheel centre: Made of rugged grey cast iron, wheel Ø 150 mm or larger with grease nipple, lacquered, silver.  
 Bearing type: Two pressed-in ball bearings.  
 Detailed description: Page 258, 259 and 48



Swivel castors	Fixed castors	Swivel castors with 'stop-top' brake	Wheel Ø [mm]	Wheel width [mm]	Load capacity [kg]	Bearing type	Total height [mm]	Plate size [mm]	Bolt hole spacing [mm]	Bolt hole Ø [mm]	Offset swivel castor [mm]
LS-GTH 127K	BS-GTH 127K	LS-GTH 127K-ST	125	50	600	Ball bearing	170	140 x 110	105 x 75-80	11	50
LS-GTH 150K	BS-GTH 150K	LS-GTH 150K-ST	150	50	750	Ball bearing	200	140 x 110	105 x 75-80	11	55
LS-GTH 160K	BS-GTH 160K	LS-GTH 160K-ST	160	50	800	Ball bearing	205	140 x 110	105 x 75-80	11	55
LS-GTH 200K	BS-GTH 200K	LS-GTH 200K-ST	200	50	1000	Ball bearing	245	140 x 110	105 x 75-80	11	60
LS-GTH 202K	BS-GTH 202K	LS-GTH 202K-ST	200	80	1600	Ball bearing	255	175 x 140	140 x 105	14	65
LS-GTH 250K	BS-GTH 250K	LS-GTH 250K-ST	250	60	1500	Ball bearing	305	175 x 140	140 x 105	14	75
LS-GTH 252K	BS-GTH 252K	LS-GTH 252K-ST	250	80	1800	Ball bearing	305	175 x 140	140 x 105	14	75
LS-GTH 300K	BS-GTH 300K	LS-GTH 300K-ST	300	60	1800	Ball bearing	355	175 x 140	140 x 105	14	85
LS-GTH 302K	BS-GTH 302K	LS-GTH 302K-ST	300	80	2400	Ball bearing	355	175 x 140	140 x 105	14	85
LS-GTH 304K	BS-GTH 304K	*	300	100	3000	Ball bearing	370	200 x 160	160 x 120	14	85
LS-GTH 362K	BS-GTH 362K	*	360	75	2500	Ball bearing	430	200 x 160	160 x 120	14	100
LS-GTH 364K	BS-GTH 364K	*	360	120	3800	Ball bearing	430	255 x 200	210 x 160	18	100
LS-GTH 402K	BS-GTH 402K	*	400	80	3000	Ball bearing	470	200 x 160	160 x 120	14	100
LS-GTH 406K	BS-GTH 406K	*	400	125	5000	Ball bearing	480	255 x 200	210 x 160	18	125
LS-GTH 504K	BS-GTH 504K	*	500	150	7500	Ball bearing	630	400 x 300	340 x 240	26	125
LS-GTH 604K	BS-GTH 604K	*	600	200	12000	Ball bearing	730	400 x 300	340 x 240	26	130

\* For the 'Radstop' brake version refer to 'Options'

11

**Options**



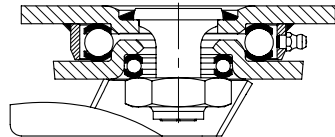
	Image with red lacquered bracket Ø 500-600 mm	Antistatic version, non-marking grey	With 'Radstop' wheel brake	With directional lock 2 x 180° (-RI2) / 4 x 90° (-RI4)	With directional lock 4 x 90° (hand-operated)	With steel foot guard	Truck lock
Technical description page		36, 39	81	83	83	84	82, 483
Product code suffix		-AS	-RAH	-RI2 / -RI4	-RI4H	-FS	FF 125/150/160/200
Available for		upon request	Ø 300x100 or larger upon request	wheel Ø 125 - 300x80 mm	Ø 300x100 or larger upon request	upon request	wheel Ø 125 - 200x50 mm

Series: LOD-VSTH, BOD-VSTH, LOD-ALTH, BOD-ALTH,  
LOD-GTH, BOD-GTH

## Welded steel heavy duty twin wheel castors, wheels with Blickle Extrathane® polyurethane tread

500 - 900 kg

✓RoHS



**Brackets:** LOD/BOD series - Sturdy welded steel construction, swivel bracket with double ball bearing in the swivel head, additionally reinforced by the integration of **four specially shaped and hardened bearing seats**, swivel head seal with labyrinth design, fitted grease nipple, bolted and secured with a welded very strong central kingpin.  
Bolted wheel axle.  
Zinc-plated, blue-passivated, Cr6-free.  
Bracket overview: Page 68  
Top plate drawings: Page 77

**Wheels:** VSTH/ALTH/GTH series - Tread: Made of high-quality polyurethane-elastomer Blickle Extrathane®, 92° shore A, light brown, non-marking, non-staining.  
Wheel centre: VSTH series: Made of steel.  
ALTH series: Made of die-cast aluminium.  
GTH series: Made of rugged grey cast iron, lacquered, silver.  
Bearing type: Two pressed-in ball bearings.  
Detailed description: Page 246, 258 and 48



Swivel castors	Fixed castors	Wheel Ø [mm]	Wheel width [mm]	Load capacity [kg]	Bearing type	Total height [mm]	Plate size [mm]	Bolt hole spacing [mm]	Bolt hole Ø [mm]	Offset swivel castor [mm]
LOD-VSTH 75K	BOD-VSTH 75K	75	2 x 40	500	Ball bearing	123	110 x 140 *	75-80 x 105	11	40
LOD-ALTH 101K	BOD-ALTH 101K	100	2 x 40	600	Ball bearing	145	110 x 140 *	75-80 x 105	11	45
LOD-GTH 125K	BOD-GTH 125K	125	2 x 40	900	Ball bearing	170	110 x 140 *	75-80 x 105	11	50

\* Fixed castors: Long plate side is parallel to the axle

### Options



Antistatic version,  
non-marking grey

Technical description page 36, 39

Product code suffix **-AS**

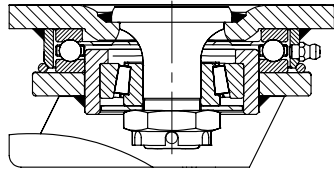
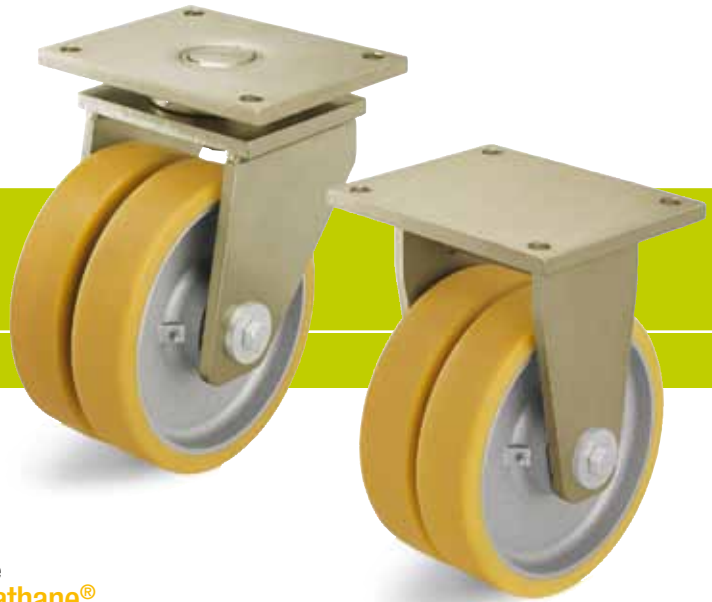
Available for upon request

Series: LSD-VSTH, BSD-VSTH, LSD-GTH, BSD-GTH

**Welded steel heavy duty twin wheel castors, strong swivel head design, wheels with Blickle Extrathane® polyurethane tread**

520 - 10000 kg

RoHS



**Brackets:** LSD/BSL series - Particularly rugged welded steel construction, swivel bracket with axial grooved ball bearing DIN 711 and tapered roller bearing DIN 720 in the swivel head, dust and splash-proof, fitted grease nipple, bolted and secured with a welded very strong central kingpin.  
 Bolted wheel axle.  
 Wheel Ø 80-360 mm: Zinc-plated, yellow-passivated, Cr6-free.  
 Wheel Ø 400-500 mm: Lacquered, red.  
 Bracket overview: Page 68  
 Top plate drawings: Page 77 and 78

**Wheels:** VSTH/GTH series - Tread: Made of high-quality polyurethane-elastomer Blickle Extrathane®, 92° shore A, light brown, non-marking, non-staining.  
 Wheel centre: VSTH series: Made of steel.  
 GTH series: Made of rugged grey cast iron, wheel Ø 150 mm or larger with grease nipple, lacquered, silver.  
 Bearing type: Two pressed-in ball bearings.  
 Detailed description: Page 258, 259 and 48



Swivel castors	Fixed castors	Wheel Ø [mm]	Wheel width [mm]	Load capacity [kg]	Bearing type	Total height [mm]	Plate size [mm]	Bolt hole spacing [mm]	Bolt hole Ø [mm]	Offset swivel castor [mm]
LSD-VSTH 80K	BSD-VSTH 80K	80	2 x 40	520	Ball bearing	125	110 x 140 *	75-80 x 105	11	40
LSD-GTH 100K	BSD-GTH 100K	100	2 x 40	720	Ball bearing	145	110 x 140 *	75-80 x 105	11	45
LSD-GTH 127K	BSD-GTH 127K	125	2 x 50	1000	Ball bearing	185	140 x 175 *	105 x 140	14	50
LSD-GTH 150K-35	BSD-GTH 150K-35	150	2 x 50	1350	Ball bearing	215	140 x 175 *	105 x 140	14	55
LSD-GTH 200K-35	BSD-GTH 200K-35	200	2 x 50	1800	Ball bearing	260	140 x 175 *	105 x 140	14	60
LSD-GTH 202K	BSD-GTH 202K	200	2 x 80	2800	Ball bearing	280	200 x 255 *	160 x 210	18	60
LSD-GTH 250K	BSD-GTH 250K	250	2 x 60	2700	Ball bearing	330	200 x 255 *	160 x 210	18	70
LSD-GTH 252K	BSD-GTH 252K	250	2 x 80	3200	Ball bearing	330	200 x 255 *	160 x 210	18	70
LSD-GTH 302K	BSD-GTH 302K	300	2 x 80	4300	Ball bearing	390	200 x 255 *	160 x 210	18	80
LSD-GTH 304K	BSD-GTH 304K	300	2 x 100	5400	Ball bearing	390	200 x 255 *	160 x 210	18	80
	BSD-GTH 304K	300	2 x 100	5400	Ball bearing	390	200 x 300 *	160 x 210	18	
LSD-GTH 362K	BSD-GTH 362K	360	2 x 75	4500	Ball bearing	450	200 x 255 *	160 x 210	18	90
LSD-GTH 404K-42	BSD-GTH 404K-42	400	2 x 100	6800	Ball bearing	530	300 x 400 *	240 x 340	26	125
LSD-GTH 504K	BSD-GTH 504K	500	2 x 150	10000	Ball bearing	630	300 x 400 *	240 x 340	26	125

\* Fixed castors: Long plate side is parallel to the axle

11

**Options**



	Image with red lacquered bracket Ø 400-500 mm	Antistatic version, non-marking grey	With 'Radstop' wheel brake up to wheel Ø 200x50 mm	With 'Radstop' wheel brake, wheel Ø 200x80 mm or larger	With directional lock 2 x 180° (-RI2) / 4 x 90° (-RI4)	With directional lock 4 x 90° (hand-operated)	With steel foot guard
Technical description page		36, 39	81	81	83	83	84
Product code suffix		-AS	-RA	-RAH	-RI2 / -RI4	-RI4H	-FS
Available for		upon request	upon request	upon request	wheel Ø 80-200x50 upon request	wheel Ø 200x80 or larger upon request	upon request