

## Light duty wheels and castors

1



## Table of Contents

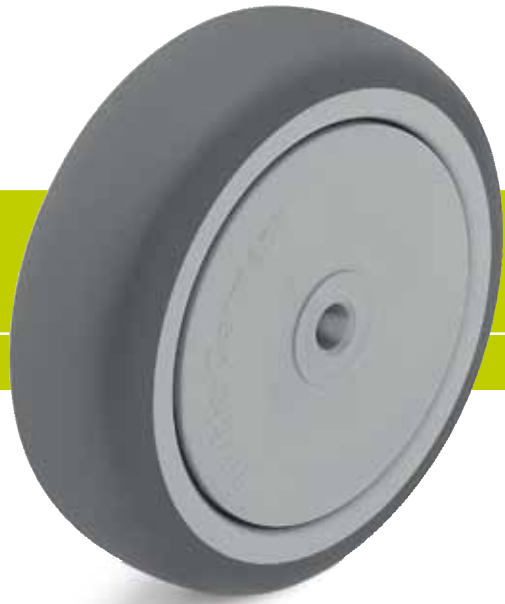
	<p><b>TPA</b></p> <p>Series TPA Wheel Ø 50 - 150 mm Load capacity 50 - 130 kg</p> <p>Page <b>88</b></p>	<p><b>LRA</b></p> <p> LRA-TPA 50 - 100 mm 50 - 75 kg</p> <p>Page <b>89</b></p>	<p><b>LKRA</b></p> <p> LKRA-TPA 80 - 150 mm 100 - 120 kg</p> <p>Page <b>89</b></p>	<p><b>LPA</b></p> <p> LPA-TPA 50 - 100 mm 50 - 75 kg</p> <p>Page <b>90</b></p>	<p><b>LKPA</b></p> <p> LKPA-TPA 80 - 150 mm 100 - 120 kg</p> <p>Page <b>90</b></p>	<p><b>LMDA</b></p> <p> LMDA-TPA 50 - 75 mm 80 - 100 kg</p> <p>Page <b>91</b></p>	<p><b>LDA</b></p> <p> LDA-TPA 50 - 75 mm 80 - 100 kg</p> <p>Page <b>92</b></p>
	<p><b>VPA/VGA</b></p> <p>Series VPA/VGA Wheel Ø 49 - 150 mm Load capacity 40 - 130 kg</p> <p>Page <b>93</b></p>	<p> LRA-VPA 50 - 100 mm 40 - 75 kg</p> <p>Page <b>94</b></p>	<p> LKRA-VPA/VGA 80 - 150 mm 80 - 120 kg</p> <p>Page <b>94/95</b></p>	<p> LPA-VPA 50 - 100 mm 40 - 75 kg</p> <p>Page <b>96</b></p>	<p> LKPA-VPA/VGA 80 - 150 mm 80 - 120 kg</p> <p>Page <b>96</b></p>	<p> LMDA-VPA 50 - 75 mm 70 - 100 kg</p> <p>Page <b>97</b></p>	<p> LDA-VPA 50 - 75 mm 70 - 100 kg</p> <p>Page <b>98</b></p>
	<p><b>PATH</b></p> <p>Series PATH Wheel Ø 50 - 125 mm Load capacity 75 - 250 kg</p> <p>Page <b>99</b></p>	<p> LRA-PATH 50 - 75 mm 75 kg</p> <p>Page <b>100</b></p>	<p> LKRA-PATH 80 - 125 mm 120 kg</p> <p>Page <b>100</b></p>	<p> LPA-PATH 50 - 75 mm 75 kg</p> <p>Page <b>101</b></p>	<p> LKPA-PATH 80 - 125 mm 120 kg</p> <p>Page <b>101</b></p>	<p> LMDA-PATH 50 - 75 mm 80 - 100 kg</p> <p>Page <b>102</b></p>	<p> LDA-PATH 50 - 75 mm 80 - 100 kg</p> <p>Page <b>103</b></p>
	<p><b>POA</b></p> <p>Series POA Wheel Ø 35 - 150 mm Load capacity 75 - 280 kg</p> <p>Page <b>104</b></p>	<p> LRA-POA 35 - 100 mm 70 - 75 kg</p> <p>Page <b>105</b></p>	<p> LKRA-POA 50 - 150 mm 110 - 120 kg</p> <p>Page <b>105</b></p>	<p> LPA-POA 35 - 100 mm 70 - 75 kg</p> <p>Page <b>106</b></p>	<p> LKPA-POA 50 - 150 mm 110 - 120 kg</p> <p>Page <b>106</b></p>	<p> LMDA-POA 50 - 75 mm 80 - 100 kg</p> <p>Page <b>107</b></p>	<p> LDA-POA 50 - 75 mm 80 - 100 kg</p> <p>Page <b>108</b></p>
	<p><b>VSTH</b></p> <p>Series VSTH Wheel Ø 35 - 80 mm Load capacity 100 - 500 kg</p> <p>Page <b>258</b></p>	<p> LRA-VSTH 35 mm 100 kg</p> <p>Page <b>109</b></p>	<p> LKRA-VSTH 50 mm 150 kg</p> <p>Page <b>109</b></p>	<p> LPA-VSTH 35 mm 100 kg</p> <p>Page <b>110</b></p>	<p> LKPA-VSTH 50 mm 150 kg</p> <p>Page <b>110</b></p>		

Series: TPA

## Wheels with thermoplastic rubber tread, with polypropylene wheel centre

50 - 130 kg

RoHS



1

<b>Tread &amp; tyre hardness</b>	85° shore A
<b>Temperature resistance</b>	-20° C - +60° C
<b>Rolling resistance</b>	very good
<b>Operating noise</b>	good
<b>Floor surface preservation</b>	good

**TPA-wheel series:**

**Tread:** Made of high-quality thermoplastic rubber-elastomer (TPE), 85° shore A hardness, high operational comfort, low-noise operation, low rolling and swivel resistance, good floor preservation, colour grey, non-marking, chemically bonded for an inseparable connection with the wheel centre.

(Material description page 38)

**Wheel centre:** Made of high-quality, impact-resistant polypropylene, colour silver grey (colour black for electrically conductive '-ELS' version).

**Bearing types:**

- Plain bore, corrosion-resistant
- Ball bearing: Two pressed-in ball bearings, lubricated with long-life grease.
- Ball bearing (C): A centrally encapsulated sealed ball bearing within the injected polypropylene, with integrated synthetic thread guard, lubricated with long-life grease.

**Other features:**

Very high chemical resistance to many aggressive substances (table page 36-37).  
 Operating temperature: -20° C to +60° C.  
 At ambient temperatures above +30° C the load capacity is reduced.  
 Maintenance-free under standard conditions.  
 The tread contains traces of oil. On absorbent surfaces this can cause some staining. As an option we recommend wheels from the VPA, VGA (page 93) or PATH (page 99) series.

**Wheel series overview page 42**

Wheels	Wheel Ø (D) [mm]	Wheel width (T2) [mm]	Load capacity [kg]	Bearing type	Axle bore Ø (d) [mm]	Hub length (T1) [mm]
TPA 50/8G	50	19	50	Plain bore	8	22
TPA 50/6K-FK	50	19	50	Ball bearing (C)	6	23
TPA 75/8G	75	25	75	Plain bore	8	29.5
TPA 75/6K-FK	75	25	75	Ball bearing (C)	6	31
TPA 80/12G	80	32	100	Plain bore	12	35
TPA 80/8K-FK	80	32	100	Ball bearing (C)	8	36
TPA 100/8G	100	25	90	Plain bore	8	29.5
TPA 101/12G	100	32	110	Plain bore	12	35
TPA 101/8K-FK	100	32	110	Ball bearing (C)	8	36
TPA 126/12G	125	32	125	Plain bore	12	35
TPA 126/8K-FK	125	32	125	Ball bearing (C)	8	36
TPA 150/12G	150	32	130	Plain bore	12	36
TPA 150/12K	150	32	130	Ball bearing	12	33

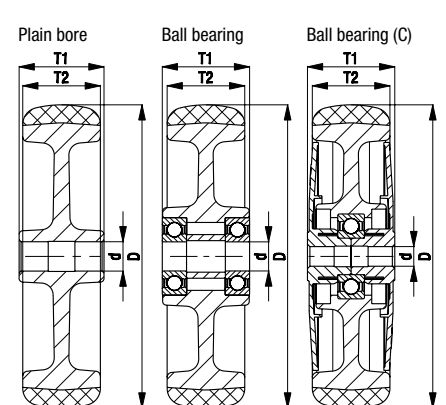
For further dimensions refer to page 145



**Options**

Image	Image plain bore version	Electrically conductive version, non-marking grey *	Wheel with additional ball bearing seals
Technical description page		36, 38	61
<b>Product code suffix</b>		<b>-ELS</b>	<b>-KD</b>
Available for		wheel Ø 50-125 mm	wheel Ø 50-125 mm

\* Load capacity is reduced by 35 %



Series: LRA-TPA, BRA-TPA, LKRA-TPA, BKRA-TPA

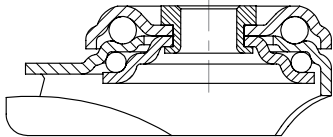
## Light duty castors with bolt hole fitting, wheel with thermoplastic rubber tread

50 - 120 kg

RoHS



1



**Brackets:** LRA/BRA, LKRA/BKRA series - Made of pressed steel, swivel bracket with double ball bearing in the swivel head, strong central kingpin, ball protection by the special top plate and ball disc design. The special Blickle dynamic riveting process of the swivel head results in minimal swivel head play and smooth rolling characteristics with an increased service life achieved by the work hardening of the ball race grooves.  
Bolted wheel axle.  
Zinc-plated, blue-passivated, Cr6-free.  
Brake lever for swivel castors with 'stop-fix' brake: LRA series are made of synthetic, LKRA series are made of steel.  
Bracket overview: Page 62  
Wheel and swivel head 'stop-fix' brake: Page 80

**Wheels:** TPA series - Tread: Made of high-quality thermoplastic rubber-elastomer (TPE), containing traces of oil, 85° shore A, grey, non-marking.  
Wheel centre: Made of high-quality, impact-resistant polypropylene, silver grey (black for electrically conductive '-ELS' version).  
Bearing types: Plain bore, two pressed-in ball bearings or a centrally encapsulated ball bearing (C). Ball bearing (C) with synthetic thread guard as standard.  
Detailed description: Page 88 and 42



Swivel castors	Fixed castors	Swivel castors with 'stop-fix' brake	Wheel Ø [mm]	Wheel width [mm]	Load capacity [kg]	Bearing type	Total height [mm]	Plate Ø [mm]	Bolt hole Ø [mm]	Offset swivel castor [mm]
LRA-TPA 50G	BRA-TPA 50G	LRA-TPA 50G-FI *	50	19	50	Plain bore	69	43	11	25
LRA-TPA 50K-FK	BRA-TPA 50K-FK	LRA-TPA 50K-FI-FK *	50	19	50	Ball bearing (C)	69	43	11	25
LRA-TPA 75G	BRA-TPA 75G	LRA-TPA 75G-FI *	75	25	75	Plain bore	98	43	11	29
LRA-TPA 75K-FK	BRA-TPA 75K-FK	LRA-TPA 75K-FI-FK *	75	25	75	Ball bearing (C)	98	43	11	29
LKRA-TPA 80G	BKRA-TPA 80G	LKRA-TPA 80G-FI	80	32	100	Plain bore	108	57	13	40
LKRA-TPA 80G-11		LKRA-TPA 80G-11-FI	80	32	100	Plain bore	108	57	11	40
LKRA-TPA 80K-FK	BKRA-TPA 80K-FK	LKRA-TPA 80K-FI-FK	80	32	100	Ball bearing (C)	108	57	13	40
LKRA-TPA 80K-11-FK		LKRA-TPA 80K-11-FI-FK	80	32	100	Ball bearing (C)	108	57	11	40
LRA-TPA 100G		LRA-TPA 100G-FI *	100	25	70	Plain bore	121	43	11	33
LKRA-TPA 101G	BKRA-TPA 101G	LKRA-TPA 101G-FI	100	32	110	Plain bore	133	57	13	40
LKRA-TPA 101G-11		LKRA-TPA 101G-11-FI	100	32	110	Plain bore	133	57	11	40
LKRA-TPA 101K-FK	BKRA-TPA 101K-FK	LKRA-TPA 101K-FI-FK	100	32	110	Ball bearing (C)	133	57	13	40
LKRA-TPA 101K-11-FK		LKRA-TPA 101K-11-FI-FK	100	32	110	Ball bearing (C)	133	57	11	40
LKRA-TPA 126G	BKRA-TPA 126G	LKRA-TPA 126G-FI	125	32	120	Plain bore	158	57	13	40
LKRA-TPA 126G-11		LKRA-TPA 126G-11-FI	125	32	120	Plain bore	158	57	11	40
LKRA-TPA 126K-FK	BKRA-TPA 126K-FK	LKRA-TPA 126K-FI-FK	125	32	120	Ball bearing (C)	158	57	13	40
LKRA-TPA 126K-11-FK		LKRA-TPA 126K-11-FI-FK	125	32	120	Ball bearing (C)	158	57	11	40
LKRA-TPA 150K	BKRA-TPA 150K	LKRA-TPA 150K-FI	150	32	110	Ball bearing	182	57	13	40
LKRA-TPA 150K-11		LKRA-TPA 150K-11-FI	150	32	110	Ball bearing	182	57	11	40

\* Brake lever made of synthetic, refer to image below  
For stainless steel versions refer to page 344



### Options \*\*

	Image plain bore version	Image with synthetic brake lever	Electrically conductive version, non-marking grey ***	With threaded pin M10 x 30 M12 x 30	With plug-in pin Ø 11 x 30.5 ****	With synthetic expander fitting	With metal expander fitting
Technical description page			36, 38	74	75	75	75
Product code suffix			-ELS	-GS10 / -GS12	-ES	refer to page 111	refer to page 111
Available for		LRA...FI series as standard	wheel Ø 50-125 mm	-GS10: LRA series -GS12: LKRA series	LRA series swivel castors	swivel castors bolt hole Ø11 (except ELS)	swivel castors with bolt hole Ø 11 mm

\*\* Additional options:  
1. Brackets in special colours (electrostatic powder coating), available upon request  
2. Bumpers AG / ARG series refer to page 111 (technical description page 84)  
\*\*\* Load capacity is reduced by 35 % \*\*\*\* For suitable synthetic castor sockets for round tubes refer to page 111

Series: LPA-TPA, BPA-TPA, LKPA-TPA, BKPA-TPA

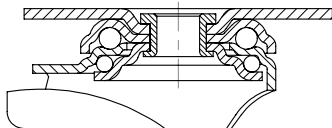
## Light duty castors with top plate fitting, wheel with thermoplastic rubber tread

50 - 120 kg

✓RoHS



1



**Brackets:** LPA/BPA, LKPA/BKPA series - Made of pressed steel, swivel bracket with double ball bearing in the swivel head, strong central kingpin, ball protection by the special top plate and ball disc design. The special Blickle dynamic riveting process of the swivel head results in minimal swivel head play and smooth rolling characteristics with an increased service life achieved by the work hardening of the ball race grooves. Bolted wheel axle. Zinc-plated, blue-passivated, Cr6-free.

**Wheels:** TPA series - Tread: Made of high-quality thermoplastic rubber-elastomer (TPE), containing traces of oil, 85° shore A, grey, non-marking. Wheel centre: Made of high-quality, impact-resistant polypropylene, silver grey (black for electrically conductive '-ELS' version).

**Bearing types:** Plain bore, two pressed-in ball bearings or a centrally encapsulated ball bearing (C). Ball bearing (C) with synthetic thread guard as standard.

Detailed description: Page 88 and 42

Bracket overview: Page 62  
Top plate drawings: Page 76  
Wheel and swivel head 'stop-fix' brake: Page 80

Swivel castors	Fixed castors	Swivel castors with 'stop-fix' brake	Wheel Ø [mm]	Wheel width [mm]	Load capacity [kg]	Bearing type	Total height [mm]	Plate size [mm]	Bolt hole spacing [mm]	Bolt hole Ø [mm]	Offset swivel castor [mm]
LPA-TPA 50G	BPA-TPA 50G	LPA-TPA 50G-FI *	50	19	50	Plain bore	71	60 x 60	38x38/48x48	6.2	25
LPA-TPA 50K-FK	BPA-TPA 50K-FK	LPA-TPA 50K-FI-FK *	50	19	50	Ball bearing (C)	71	60 x 60	38x38/48x48	6.2	25
LPA-TPA 75G	BPA-TPA 75G	LPA-TPA 75G-FI *	75	25	75	Plain bore	100	60 x 60	38x38/48x48	6.2	29
LPA-TPA 75K-FK	BPA-TPA 75K-FK	LPA-TPA 75K-FI-FK *	75	25	75	Ball bearing (C)	100	60 x 60	38x38/48x48	6.2	29
LKPA-TPA 80G	BKPA-TPA 80G	LKPA-TPA 80G-FI	80	32	100	Plain bore	111	90 x 66	75x45/61x51	8.5	40
LKPA-TPA 80K-FK	BKPA-TPA 80K-FK	LKPA-TPA 80K-FI-FK	80	32	100	Ball bearing (C)	111	90 x 66	75x45/61x51	8.5	40
LPA-TPA 100G		LPA-TPA 100G-FI *	100	25	70	Plain bore	123	60 x 60	38x38/48x48	6.2	33
LKPA-TPA 101G	BKPA-TPA 101G	LKPA-TPA 101G-FI	100	32	110	Plain bore	136	90 x 66	75x45/61x51	8.5	40
LKPA-TPA 101K-FK	BKPA-TPA 101K-FK	LKPA-TPA 101K-FI-FK	100	32	110	Ball bearing (C)	136	90 x 66	75x45/61x51	8.5	40
LKPA-TPA 126G	BKPA-TPA 126G	LKPA-TPA 126G-FI	125	32	120	Plain bore	161	90 x 66	75x45/61x51	8.5	40
LKPA-TPA 126K-FK	BKPA-TPA 126K-FK	LKPA-TPA 126K-FI-FK	125	32	120	Ball bearing (C)	161	90 x 66	75x45/61x51	8.5	40
LKPA-TPA 150G	BKPA-TPA 150G	LKPA-TPA 150G-FI	150	32	110	Plain bore	185	90 x 66	75x45/61x51	8.5	40
LKPA-TPA 150K	BKPA-TPA 150K	LKPA-TPA 150K-FI	150	32	110	Ball bearing	185	90 x 66	75x45/61x51	8.5	40

\* Brake lever made of synthetic, refer to image below  
For stainless steel versions refer to page 345

### Options



	Image plain bore version	Image with synthetic brake lever	Electrically conductive version, non-marking grey **	Special colours (electrostatic powder coating)
Technical description page			36, 38	
Product code suffix			<b>-ELS</b>	
Available for		LPA...-FI series as standard	wheel Ø 50-125 mm	upon request

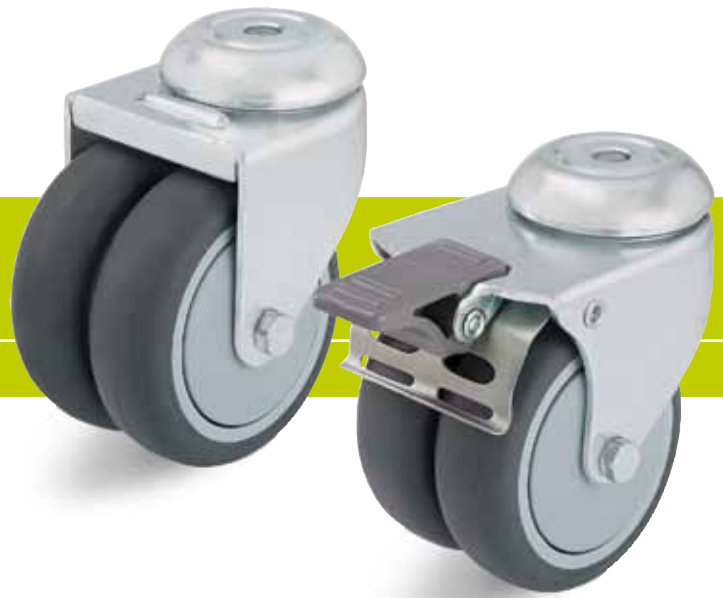
\*\* Load capacity is reduced by 35 %

Series: LMDA-TPA

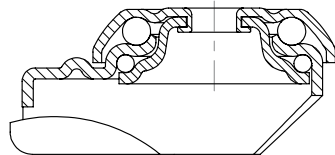
**Light duty twin wheel castors with bolt hole fitting, wheels with thermoplastic rubber tread**

80 - 100 kg

RoHS



1



**Brackets:** LMDA series - Made of pressed steel, with double ball bearing in the swivel head, ball protection by the special top plate and ball disc design, dynamically pressed swivel head.  
Bolted wheel axle.  
Zinc-plated, blue-passivated, Cr6-free.  
Bracket overview: Page 62  
Wheel and swivel head 'stop-fix' brake: Page 80

**Wheels:** TPA series - Tread: Made of high-quality thermoplastic rubber-elastomer (TPE), containing traces of oil, 85° shore A, grey, non-marking.  
Wheel centre: Made of high-quality, impact-resistant polypropylene, silver grey (black for electrically conductive '-ELS' version).  
Bearing types: Plain bore or a centrally encapsulated ball bearing (C). Ball bearing (C) with synthetic thread guard as standard.  
Detailed description: Page 88 and 42

Swivel castors	Swivel castors with 'stop-fix' brake	Wheel Ø [mm]	Wheel width [mm]	Load capacity [kg]	Bearing type	Total height [mm]	Plate Ø [mm]	Bolt hole Ø [mm]	Offset [mm]
LMDA-TPA 50G	LMDA-TPA 50G-FI	50	2 x 19	80	Plain bore	71	41	10.2	31
LMDA-TPA 50K-FK	LMDA-TPA 50K-FI-FK	50	2 x 19	80	Ball bearing (C)	71	41	10.2	31
LMDA-TPA 75G	LMDA-TPA 75G-FI	75	2 x 25	100	Plain bore	98	55	10.2	34
LMDA-TPA 75K-FK	LMDA-TPA 75K-FI-FK	75	2 x 25	100	Ball bearing (C)	98	55	10.2	34

**Options**



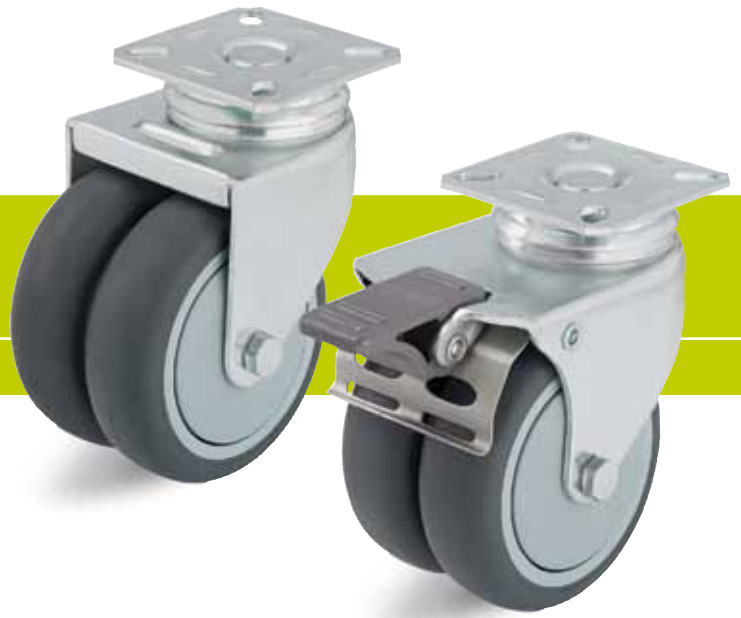
	Image plain bore version	Electrically conductive version, non-marking grey
Technical description page		36, 38
Product code suffix		-ELS
Available for		all sizes

Series: LDA-TPA

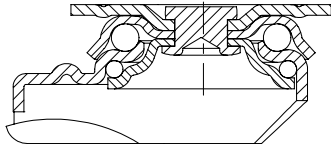
## Light duty twin wheel castors with top plate fitting, wheels with thermoplastic rubber tread

80 - 100 kg

✓RoHS



1



**Brackets:** LDA series - Made of pressed steel, with double ball bearing in the swivel head, ball protection by the special top plate and ball disc design, dynamically pressed swivel head.  
Bolted wheel axle.  
Zinc-plated, blue-passivated, Cr6-free.  
Bracket overview: Page 62  
Top plate drawings: Page 76  
Wheel and swivel head 'stop-fix' brake: Page 80

**Wheels:** TPA series - Tread: Made of high-quality thermoplastic rubber-elastomer (TPE), containing traces of oil, 85° shore A, grey, non-marking.  
Wheel centre: Made of high-quality, impact-resistant polypropylene, silver grey (black for electrically conductive '-ELS' version).  
Bearing types: Plain bore or a centrally encapsulated ball bearing (C). Ball bearing (C) with synthetic thread guard as standard.  
Detailed description: Page 88 and 42

Swivel castors	Swivel castors with 'stop-fix' brake	Wheel Ø [mm]	Wheel width [mm]	Load capacity [kg]	Bearing type	Total height [mm]	Plate size [mm]	Bolt hole spacing [mm]	Bolt hole Ø [mm]	Offset [mm]
LDA-TPA 50G	LDA-TPA 50G-FI	50	2 x 19	80	Plain bore	71	60 x 60	38x38/48x48	6.2	31
LDA-TPA 50K-FK	LDA-TPA 50K-FI-FK	50	2 x 19	80	Ball bearing (C)	71	60 x 60	38x38/48x48	6.2	31
LDA-TPA 75G	LDA-TPA 75G-FI	75	2 x 25	100	Plain bore	101	60 x 60	40x40/46x46	6.2	34
LDA-TPA 75K-FK	LDA-TPA 75K-FI-FK	75	2 x 25	100	Ball bearing (C)	101	60 x 60	40x40/46x46	6.2	34

### Options



Image	plain bore version	Electrically conductive version, non-marking grey
Technical description page	36, 38	
Product code suffix	-ELS	
Available for	all sizes	

Series: VPA, VGA

## Wheels with solid rubber tyres, with synthetic rim

40 - 130 kg

RoHS



VPA series

VGA series

1

<b>Tread &amp; tyre hardness</b>	80° shore A
<b>Temperature resistance</b>	-20° C - +60° C
<b>Rolling resistance</b>	good
<b>Operating noise</b>	very good
<b>Floor surface preservation</b>	very good

### VPA, VGA-wheel series:

**Tyres:** Made of high-quality solid rubber, 80° shore A hardness, very high operational comfort, low-noise operation, very good floor preservation, colour grey, non-marking, non-staining (colour black for electrically conductive '-EL' version, marking).

VGA series: Colour dark grey.

(Material description page 38)

**Rims:** VPA series: Made of high-quality, impact-resistant nylon resp. polypropylene for electrically conductive '-EL' version, colour black.

VGA series: Made of high-quality, impact-resistant polypropylene, injection-moulded rims, colour silver grey.

### Bearing types:

- Plain bore, corrosion-resistant
- Ball bearing: Two pressed-in ball bearings, lubricated with long-life grease.
- Ball bearing (C): A centrally encapsulated sealed ball bearing within the injected polypropylene, with integrated synthetic thread guard, lubricated with long-life grease.

### Other features:

High chemical resistance to many aggressive substances, except oils (table page 36-37).  
Operating temperature: -20° C to +60° C.  
At ambient temperatures above +30° C the load capacity is reduced.

Maintenance-free under standard conditions.

**Wheel series overview page 42**

Wheels	Wheel Ø (D) [mm]	Tyre width (T2) [mm]	Load capacity [kg]	Bearing type	Axle bore Ø (d) [mm]	Hub length (T1) [mm]
VPA 49/8G *	49	18	40	Plain bore	8	22
VPA 50/8G	50	18	40	Plain bore	8	22
VPA 50/6K	50	18	40	Ball bearing	6	22.5
VPA 75/8G	75	25	60	Plain bore	8	29.5
VPA 75/6K	75	25	60	Ball bearing	6	30
VPA 80/12G	80	25	80	Plain bore	12	35
VPA 80/8K	80	25	80	Ball bearing	8	35
VPA 100/8G	100	25	90	Plain bore	8	29.5
VPA 100/12G	100	25	90	Plain bore	12	29.5
VPA 100/6K	100	25	90	Ball bearing	6	30
VGA 101/8K-FK	100	32	90	Ball bearing (C)	8	36
VPA 101/12G	100	32	110	Plain bore	12	35
VPA 101/8K	100	32	110	Ball bearing	8	35
VPA 125/12G	125	25	100	Plain bore	12	35
VPA 125/8K	125	25	100	Ball bearing	8	35
VGA 126/8K-FK	125	32	100	Ball bearing (C)	8	36
VPA 126/12G	125	32	125	Plain bore	12	35
VPA 126/8K	125	32	125	Ball bearing	8	35
VPA 150/12G	150	30	130	Plain bore	12	35
VPA 150/8K	150	30	130	Ball bearing	8	35

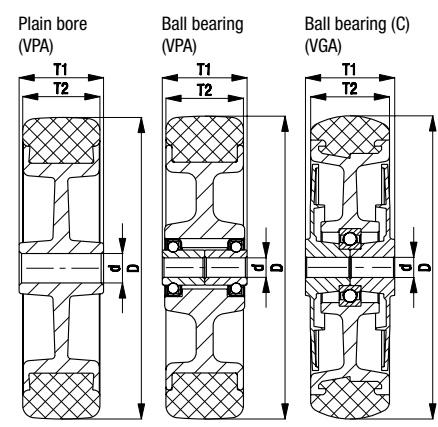
\* Smooth tread



### Options

Image	plain bore version	Electrically conductive version, black tyre **
Technical description page		36, 38
Product code suffix		-EL
Available for		VPA series ball bearing versions

\*\* Load capacity is reduced by 25 %





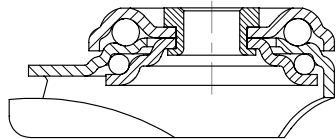
Series: LRA-VPA, BRA-VPA,  
LKRA-VPA, BKRA-VPA, LKRA-VGA, BKRA-VGA

## Light duty castors with bolt hole fitting, wheel with solid rubber tyre

40 - 110 kg



1



**Brackets:** LRA/BRA, LKRA/BKRA series - Made of pressed steel, swivel bracket with double ball bearing in the swivel head, strong central kingpin, ball protection by the special top plate and ball disc design. The special Blickle dynamic riveting process of the swivel head results in minimal swivel head play and smooth rolling characteristics with an increased service life achieved by the work hardening of the ball race grooves.  
Bolted wheel axle.  
Zinc-plated, blue-passivated, Cr6-free.  
Brake lever for swivel castors with 'stop-fix' brake: LRA series are made of synthetic, LKRA series are made of steel.  
Bracket overview: Page 62  
Wheel and swivel head 'stop-fix' brake: Page 80

**Wheels:** VPA/VGA series - Tyres: Made of high-quality solid rubber, 80° shore A, grey, non-marking, non-staining.  
VGA series: Dark grey.  
Rims: VPA series: Made of high-quality, impact-resistant nylon resp. polypropylene for electrically conductive '-EL' version, black.  
VGA series: Made of high-quality, impact-resistant polypropylene, injection-moulded rims, silver grey.  
Bearing types: Plain bore, two pressed-in ball bearings or a centrally encapsulated ball bearing (C). Ball bearing (C) with synthetic thread guard as standard.  
Detailed description: Page 93 and 42



Swivel castors	Fixed castors	Swivel castors with 'stop-fix' brake	Wheel Ø [mm]	Tyre width [mm]	Load capacity [kg]	Bearing type	Total height [mm]	Plate Ø [mm]	Bolt hole Ø [mm]	Offset swivel castor [mm]
LRA-VPA 50G	BRA-VPA 50G	LRA-VPA 50G-FI *	50	18	40	Plain bore	69	43	11	25
LRA-VPA 50K	BRA-VPA 50K	LRA-VPA 50K-FI *	50	18	40	Ball bearing	69	43	11	25
LRA-VPA 75G	BRA-VPA 75G	LRA-VPA 75G-FI *	75	25	60	Plain bore	98	43	11	29
LRA-VPA 75K	BRA-VPA 75K	LRA-VPA 75K-FI *	75	25	60	Ball bearing	98	43	11	29
LKRA-VPA 80G	BKRA-VPA 80G	LKRA-VPA 80G-FI	80	25	80	Plain bore	108	57	13	40
LKRA-VPA 80G-11		LKRA-VPA 80G-11-FI	80	25	80	Plain bore	108	57	11	40
LKRA-VPA 80K	BKRA-VPA 80K	LKRA-VPA 80K-FI	80	25	80	Ball bearing	108	57	13	40
LKRA-VPA 80K-11		LKRA-VPA 80K-11-FI	80	25	80	Ball bearing	108	57	11	40
LRA-VPA 100G		LRA-VPA 100G-FI *	100	25	70	Plain bore	121	43	11	33
LRA-VPA 100K		LRA-VPA 100K-FI *	100	25	70	Ball bearing	121	43	11	33
LKRA-VGA 101K-FK	BKRA-VGA 101K-FK	LKRA-VGA 101K-FI-FK	100	32	90	Ball bearing (C)	133	57	13	40
LKRA-VGA 101K-11-FK		LKRA-VGA 101K-11-FI-FK	100	32	90	Ball bearing (C)	133	57	11	40
LKRA-VPA 101G	BKRA-VPA 101G	LKRA-VPA 101G-FI	100	32	110	Plain bore	133	57	13	40
LKRA-VPA 101G-11		LKRA-VPA 101G-11-FI	100	32	110	Plain bore	133	57	11	40
LKRA-VPA 101K	BKRA-VPA 101K	LKRA-VPA 101K-FI	100	32	110	Ball bearing	133	57	13	40
LKRA-VPA 101K-11		LKRA-VPA 101K-11-FI	100	32	110	Ball bearing	133	57	11	40

\* Brake lever made of synthetic, refer to image below  
For further wheel Ø refer to the next page  
For stainless steel versions refer to page 346

### Options \*\*



	Image VGA series with ball bearing (C)	Image with synthetic brake lever	Electrically conductive version, black tyre ***	With threaded pin M10 x 30 M12 x 30	With plug-in pin Ø 11 x 30.5 ****	With synthetic expander fitting	With metal expander fitting
Technical description page			36, 38	74	75	75	75
Product code suffix			-EL	-GS10 / -GS12	-ES	refer to page 111	refer to page 111
Available for		LRA...FI series as standard	VPA series ball bearing versions	-GS10: LRA series -GS12: LKRA series	LRA series swivel castors	swivel castors bolt hole Ø11 (except EL)	swivel castors with bolt hole Ø 11 mm

\*\* Additional options: 1. Brackets in special colours (electrostatic powder coating), available upon request; 2. Bumpers AG / ARG series refer to page 111 (technical description page 84)  
3. Pressed steel thread guard, zinc-plated (-FA), available for VPA series except ...50K (technical description page 84)  
\*\*\* Load capacity is reduced by 25 % \*\*\*\* For suitable synthetic castor sockets for round tubes refer to page 111

Series: LKRA-VPA, BKRA-VPA, LKRA-VGA, BKRA-VGA

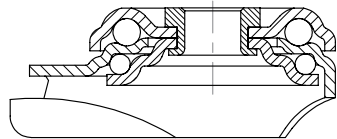
## Light duty castors with bolt hole fitting, wheel with solid rubber tyre

100 - 120 kg

RoHS



1



**Brackets:** LKRA/BKRA series - Made of pressed steel, swivel bracket with double ball bearing in the swivel head, strong central kingpin, ball protection by the special top plate and ball disc design. The special Blickle dynamic riveting process of the swivel head results in minimal swivel head play and smooth rolling characteristics with an increased service life achieved by the work hardening of the ball race grooves.  
Bolted wheel axle.  
Zinc-plated, blue-passivated, Cr6-free.  
Brake lever for swivel castors with 'stop-fix' brake made of steel.  
Bracket overview: Page 62  
Wheel and swivel head 'stop-fix' brake: Page 80

**Wheels:** VPA/VGA series - Tyres: Made of high-quality solid rubber, 80° shore A, grey, non-marking, non-staining.  
VGA series: Dark grey.  
Rims: VPA series: Made of high-quality, impact-resistant nylon resp. polypropylene for electrically conductive '-EL' version, black.  
VGA series: Made of high-quality, impact-resistant polypropylene, injection-moulded rims, silver grey.  
Bearing types: Plain bore, two pressed-in ball bearings or a centrally encapsulated ball bearing (C). Ball bearing (C) with synthetic thread guard as standard.  
Detailed description: Page 93 and 42



Swivel castors	Fixed castors	Swivel castors with 'stop-fix' brake	Wheel Ø [mm]	Tyre width [mm]	Load capacity [kg]	Bearing type	Total height [mm]	Plate Ø [mm]	Bolt hole Ø [mm]	Offset swivel castor [mm]
LKRA-VPA 125G	BKRA-VPA 125G	LKRA-VPA 125G-FI	125	25	100	Plain bore	158	57	13	40
LKRA-VPA 125G-11		LKRA-VPA 125G-11-FI	125	25	100	Plain bore	158	57	11	40
LKRA-VPA 125K	BKRA-VPA 125K	LKRA-VPA 125K-FI	125	25	100	Ball bearing	158	57	13	40
LKRA-VPA 125K-11		LKRA-VPA 125K-11-FI	125	25	100	Ball bearing	158	57	11	40
LKRA-VGA 126K-FK	BKRA-VGA 126K-FK	LKRA-VGA 126K-FI-FK	125	32	100	Ball bearing (C)	158	57	13	40
LKRA-VGA 126K-11-FK		LKRA-VGA 126K-11-FI-FK	125	32	100	Ball bearing (C)	158	57	11	40
LKRA-VPA 126G	BKRA-VPA 126G	LKRA-VPA 126G-FI	125	32	120	Plain bore	158	57	13	40
LKRA-VPA 126G-11		LKRA-VPA 126G-11-FI	125	32	120	Plain bore	158	57	11	40
LKRA-VPA 126K	BKRA-VPA 126K	LKRA-VPA 126K-FI	125	32	120	Ball bearing	158	57	13	40
LKRA-VPA 126K-11		LKRA-VPA 126K-11-FI	125	32	120	Ball bearing	158	57	11	40
LKRA-VPA 150G	BKRA-VPA 150G	LKRA-VPA 150G-FI	150	30	110	Plain bore	182	57	13	40
LKRA-VPA 150G-11		LKRA-VPA 150G-11-FI	150	30	110	Plain bore	182	57	11	40
LKRA-VPA 150K	BKRA-VPA 150K	LKRA-VPA 150K-FI	150	30	110	Ball bearing	182	57	13	40
LKRA-VPA 150K-11		LKRA-VPA 150K-11-FI	150	30	110	Ball bearing	182	57	11	40

For stainless steel versions refer to page 346

### Options \*



	Image VGA series with ball bearing (C)	Electrically conductive version, black tyre **	With pressed steel thread guard, zinc-plated	With threaded pin M12 x 30	With synthetic expander fitting	With metal expander fitting	Special colours (electrostatic powder coating)
Technical description page		36, 38	84	74	75	75	
Product code suffix		-EL	-FA	-GS12	refer to page 111	refer to page 111	
Available for		VPA series ball bearing versions	VPA series	swivel castors with bolt hole Ø 13	swivel castors bolt hole Ø11 (except EL)	swivel castors with bolt hole Ø 11 mm	upon request

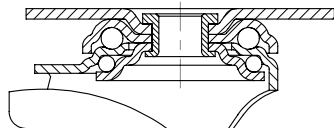
\* Additional options: Bumpers AG / ARG series refer to page 111 (technical description page 84)  
\*\* Load capacity is reduced by 25 %

Series: LPA-VPA, BPA-VPA,  
LKPA-VPA, BKPA-VPA, LKPA-VGA, BKPA-VGA

## Light duty castors with top plate fitting, wheel with solid rubber tyre

40 - 120 kg

✓RoHS



**Brackets:** LPA/BPA, LKPA/BKPA series - Made of pressed steel, swivel bracket with double ball bearing in the swivel head, strong central kingpin, ball protection by the special top plate and ball disc design. The special Blickle dynamic riveting process of the swivel head results in minimal swivel head play and smooth rolling characteristics with an increased service life achieved by the work hardening of the ball race grooves. Bolted wheel axle. Zinc-plated, blue-passivated, Cr6-free.

**Brake lever for swivel castors with 'stop-fix' brake:** LPA series are made of synthetic, LKPA series are made of steel.

Bracket overview: Page 62  
Top plate drawings: Page 76  
Wheel and swivel head 'stop-fix' brake: Page 80

**Wheels:** VPA/VGA series - Tyres: Made of high-quality solid rubber, 80° shore A, grey, non-marking, non-staining. VGA series: Dark grey.

**Rims:** VPA series: Made of high-quality, impact-resistant nylon resp. polypropylene for electrically conductive '-EL' version, black.

**VGA series:** Made of high-quality, impact-resistant polypropylene, injection-moulded rims, silver grey.

**Bearing types:** Plain bore, two pressed-in ball bearings or a centrally encapsulated ball bearing (C). Ball bearing (C) with synthetic thread guard as standard.

Detailed description: Page 93 and 42

Swivel castors	Fixed castors	Swivel castors with 'stop-fix' brake	Wheel Ø [mm]	Tyre width [mm]	Load capacity [kg]	Bearing type	Total height [mm]	Plate size [mm]	Bolt hole spacing [mm]	Bolt hole Ø [mm]	Offset swivel castor [mm]
LPA-VPA 50G	BPA-VPA 50G	LPA-VPA 50G-FI *	50	18	40	Plain bore	71	60 x 60	38x38/48x48	6.2	25
LPA-VPA 50K	BPA-VPA 50K	LPA-VPA 50K-FI *	50	18	40	Ball bearing	71	60 x 60	38x38/48x48	6.2	25
LPA-VPA 75G	BPA-VPA 75G	LPA-VPA 75G-FI *	75	25	60	Plain bore	100	60 x 60	38x38/48x48	6.2	29
LPA-VPA 75K	BPA-VPA 75K	LPA-VPA 75K-FI *	75	25	60	Ball bearing	100	60 x 60	38x38/48x48	6.2	29
LKPA-VPA 80G	BKPA-VPA 80G	LKPA-VPA 80G-FI	80	25	80	Plain bore	111	90 x 66	75x45/61x51	8.5	40
LKPA-VPA 80K	BKPA-VPA 80K	LKPA-VPA 80K-FI	80	25	80	Ball bearing	111	90 x 66	75x45/61x51	8.5	40
LPA-VPA 100G		LPA-VPA 100G-FI *	100	25	70	Plain bore	123	60 x 60	38x38/48x48	6.2	33
LPA-VPA 100K		LPA-VPA 100K-FI *	100	25	70	Ball bearing	123	60 x 60	38x38/48x48	6.2	33
LKPA-VGA 101K-FK	BKPA-VGA 101K-FK	LKPA-VGA 101K-FI-FK	100	32	90	Ball bearing (C)	136	90 x 66	75x45/61x51	8.5	40
LKPA-VPA 101G	BKPA-VPA 101G	LKPA-VPA 101G-FI	100	32	110	Plain bore	136	90 x 66	75x45/61x51	8.5	40
LKPA-VPA 101K	BKPA-VPA 101K	LKPA-VPA 101K-FI	100	32	110	Ball bearing	136	90 x 66	75x45/61x51	8.5	40
LKPA-VPA 125G	BKPA-VPA 125G	LKPA-VPA 125G-FI	125	25	100	Plain bore	161	90 x 66	75x45/61x51	8.5	40
LKPA-VPA 125K	BKPA-VPA 125K	LKPA-VPA 125K-FI	125	25	100	Ball bearing	161	90 x 66	75x45/61x51	8.5	40
LKPA-VGA 126K-FK	BKPA-VGA 126K-FK	LKPA-VGA 126K-FI-FK	125	32	100	Ball bearing (C)	161	90 x 66	75x45/61x51	8.5	40
LKPA-VPA 126G	BKPA-VPA 126G	LKPA-VPA 126G-FI	125	32	120	Plain bore	161	90 x 66	75x45/61x51	8.5	40
LKPA-VPA 126K	BKPA-VPA 126K	LKPA-VPA 126K-FI	125	32	120	Ball bearing	161	90 x 66	75x45/61x51	8.5	40
LKPA-VPA 150G	BKPA-VPA 150G	LKPA-VPA 150G-FI	150	30	110	Plain bore	185	90 x 66	75x45/61x51	8.5	40
LKPA-VPA 150K	BKPA-VPA 150K	LKPA-VPA 150K-FI	150	30	110	Ball bearing	185	90 x 66	75x45/61x51	8.5	40

\* Brake lever made of synthetic, refer to image below  
For stainless steel versions refer to page 347

### Options



	Image VGA series with ball bearing (C)	Image with synthetic brake lever	Electrically conductive version, black tyre **	With pressed steel thread guard, zinc-plated	Special colours (electrostatic powder coating)
Technical description page			36, 38	84	
Product code suffix			-EL	-FA	
Available for		LPA...FI series as standard	VPA series ball bearing versions	VPA series except ...50K	upon request

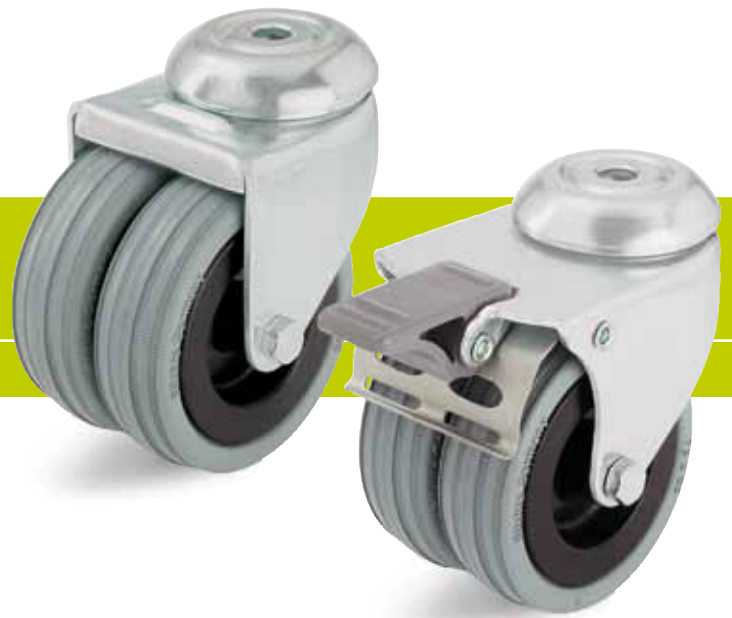
\*\* Load capacity is reduced by 25 %

Series: LMDA-VPA

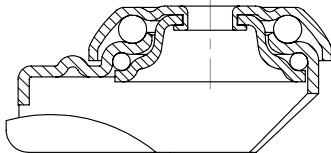
**Light duty twin wheel castors with bolt hole fitting, wheels with solid rubber tyre**

70 - 100 kg

RoHS



1



**Brackets:** LMDA series - Made of pressed steel, with double ball bearing in the swivel head, ball protection by the special top plate and ball disc design, dynamically pressed swivel head.  
 Bolted wheel axle.  
 Zinc-plated, blue-passivated, Cr6-free.  
 Bracket overview: Page 62  
 Wheel and swivel head 'stop-fix' brake: Page 80

**Wheels:** VPA series - Tyres: Made of high-quality solid rubber, 80° shore A, grey, non-marking, non-staining.  
 Rims: Made of high-quality, impact-resistant nylon resp. polypropylene for electrically conductive '-EL' version, black.  
 Bearing types: Plain bore or two pressed-in ball bearings.  
 Detailed description: Page 93 and 42



Swivel castors	Swivel castors with 'stop-fix' brake	Wheel Ø [mm]	Tyre width [mm]	Load capacity [kg]	Bearing type	Total height [mm]	Plate Ø [mm]	Bolt hole Ø [mm]	Offset [mm]
LMDA-VPA 50G	LMDA-VPA 50G-FI	50	2 x 18	70	Plain bore	71	41	10.2	31
LMDA-VPA 50K	LMDA-VPA 50K-FI	50	2 x 18	70	Ball bearing	71	41	10.2	31
LMDA-VPA 75G	LMDA-VPA 75G-FI	75	2 x 25	100	Plain bore	98	55	10.2	34
LMDA-VPA 75K	LMDA-VPA 75K-FI	75	2 x 25	100	Ball bearing	98	55	10.2	34

**Options**



Electrically conductive version, black tyre

Technical description page 36, 38

Product code suffix **-EL**

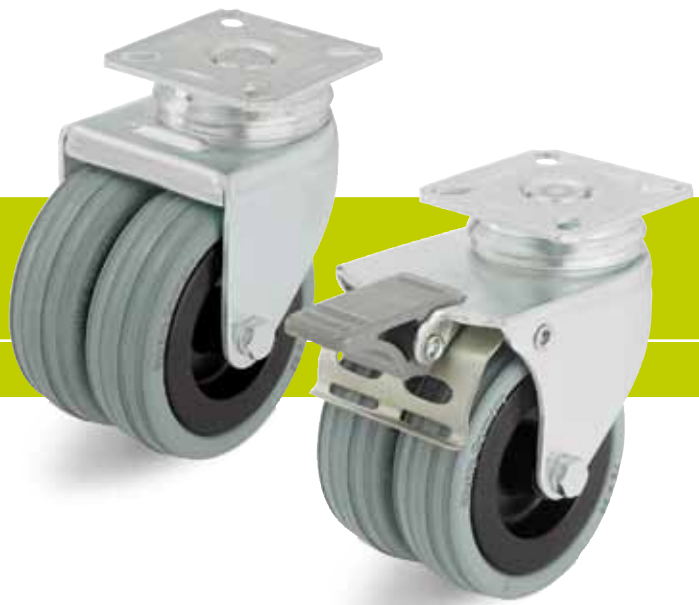
Available for all ball bearing versions

Series: LDA-VPA

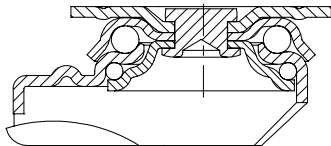
**Light duty twin wheel castors with top plate fitting, wheels with solid rubber tyre**

70 - 100 kg

RoHS



1



**Brackets:** LDA series - Made of pressed steel, with double ball bearing in the swivel head, ball protection by the special top plate and ball disc design, dynamically pressed swivel head.  
 Bolted wheel axle.  
 Zinc-plated, blue-passivated, Cr6-free.  
 Bracket overview: Page 62  
 Top plate drawings: Page 76  
 Wheel and swivel head 'stop-fix' brake: Page 80

**Wheels:** VPA series - Tyres: Made of high-quality solid rubber, 80° shore A, grey, non-marking, non-staining.  
 Rims: Made of high-quality, impact-resistant nylon resp. polypropylene for electrically conductive '-EL' version, black.  
 Bearing types: Plain bore or two pressed-in ball bearings.  
 Detailed description: Page 93 and 42

Swivel castors	Swivel castors with 'stop-fix' brake	Wheel Ø [mm]	Tyre width [mm]	Load capacity [kg]	Bearing type	Total height [mm]	Plate size [mm]	Bolt hole spacing [mm]	Bolt hole Ø [mm]	Offset [mm]
LDA-VPA 50G	LDA-VPA 50G-FI	50	2 x 18	70	Plain bore	71	60 x 60	38x38/48x48	6.2	31
LDA-VPA 50K	LDA-VPA 50K-FI	50	2 x 18	70	Ball bearing	71	60 x 60	38x38/48x48	6.2	31
LDA-VPA 75G	LDA-VPA 75G-FI	75	2 x 25	100	Plain bore	101	60 x 60	40x40/46x46	6.2	34
LDA-VPA 75K	LDA-VPA 75K-FI	75	2 x 25	100	Ball bearing	101	60 x 60	40x40/46x46	6.2	34

**Options**



Electrically conductive version, black tyre

Technical description page 36, 38

Product code suffix **-EL**

Available for all ball bearing versions

Series: PATH

## Wheels with thermoplastic polyurethane tread, with nylon wheel centre

75 - 250 kg

RoHS



1

<b>Tread &amp; tyre hardness</b>	94° shore A
<b>Temperature resistance</b>	-25° C - +70° C temporarily up to +90° C
<b>Rolling resistance</b>	very good
<b>Operating noise</b>	good
<b>Floor surface preservation</b>	good

### PATH-wheel series:

**Tread:** Made of high-quality thermoplastic polyurethane, 94° shore A hardness, low-noise operation, low rolling and swivel resistance, good floor preservation, high abrasion resistance, colour dark grey, non-marking, non-staining, chemically bonded for an inseparable connection with the wheel centre.

(Material description page 39)

**Wheel centre:** Made of high-quality, impact-resistant nylon, colour silver grey.

### Bearing types:

- Plain bore, corrosion-resistant
- Ball bearing (C): A centrally encapsulated sealed ball bearing within the injected nylon, with integrated synthetic thread guard, lubricated with long-life grease.

### Other features:

Very high chemical resistance to many aggressive substances (table page 36-37).

Operating temperature: -25° C to +70° C, temporarily up to +90° C.

At ambient temperatures above +35° C the load capacity is reduced.

Maintenance-free under standard conditions.

**Wheel series overview page 42**

Wheels	Wheel Ø (D) [mm]	Wheel width (T2) [mm]	Load capacity [kg]	Bearing type	Axle bore Ø (d) [mm]	Hub length (T1) [mm]
PATH 50/8G	50	19	75	Plain bore	8	22
PATH 50/6K-FK	50	19	75	Ball bearing (C)	6	23
PATH 75/8G	75	25	100	Plain bore	8	29.5
PATH 75/6K-FK	75	25	100	Ball bearing (C)	6	31
PATH 80/12G	80	32	150	Plain bore	12	35
PATH 80/8K-FK	80	32	150	Ball bearing (C)	8	36
PATH 101/12G	100	32	200	Plain bore	12	35
PATH 101/8K-FK	100	32	200	Ball bearing (C)	8	36
PATH 126/12G	125	32	250	Plain bore	12	35
PATH 126/8K-FK	125	32	250	Ball bearing (C)	8	36

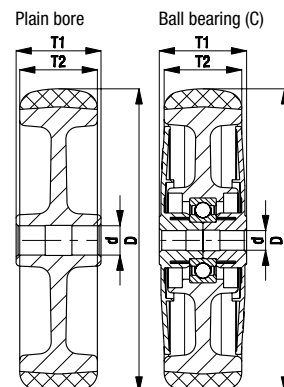
For further dimensions refer to page 208

### Options



Image	Electrically conductive version, non-marking grey *	Wheel with additional ball bearing seals
Image plain bore version		
Technical description page	36, 39	61
<b>Product code suffix</b>	<b>-ELS</b>	<b>-KD</b>
Available for	all ball bearing versions	all ball bearing versions

\* Load capacity is reduced by 35 %

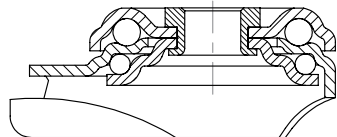
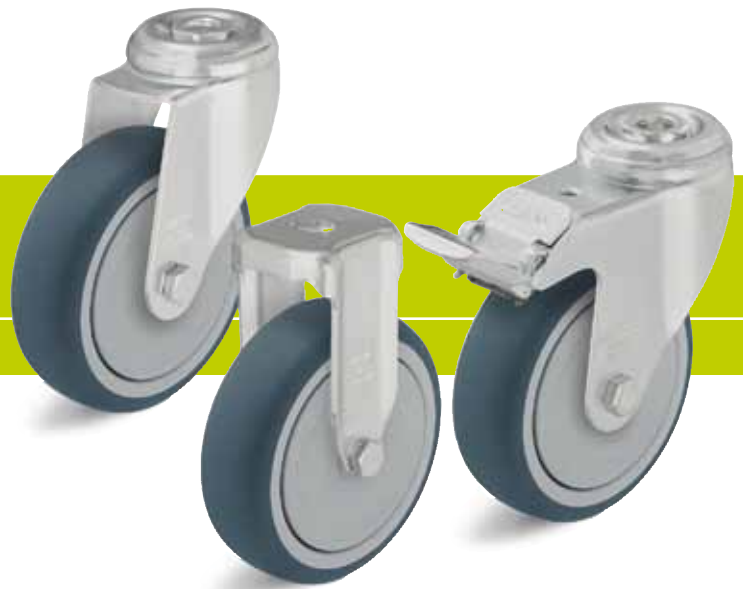


Series: LRA-PATH, BRA-PATH, LKRA-PATH, BKRA-PATH

## Light duty castors with bolt hole fitting, wheel with thermoplastic polyurethane tread

75 - 120 kg

✓RoHS



**Brackets:** LRA/BRA, LKRA/BKRA series - Made of pressed steel, swivel bracket with double ball bearing in the swivel head, strong central kingpin, ball protection by the special top plate and ball disc design. The special Blickle dynamic riveting process of the swivel head results in minimal swivel head play and smooth rolling characteristics with an increased service life achieved by the work hardening of the ball race grooves.  
Bolted wheel axle.  
Zinc-plated, blue-passivated, Cr6-free.  
Brake lever for swivel castors with 'stop-fix' brake: LRA series are made of synthetic, LKRA series are made of steel.  
Bracket overview: Page 62  
Wheel and swivel head 'stop-fix' brake: Page 80

**Wheels:** PATH series - Tread: Made of high-quality thermoplastic polyurethane, 94° shore A, dark grey, non-marking, non-staining.  
Wheel centre: Made of high-quality, impact-resistant nylon, silver grey.  
Bearing types: Plain bore or a centrally encapsulated ball bearing (C). Ball bearing (C) with synthetic thread guard as standard.  
Detailed description: Page 99 and 42

Swivel castors	Fixed castors	Swivel castors with 'stop-fix' brake	Wheel Ø [mm]	Wheel width [mm]	Load capacity [kg]	Bearing type	Total height [mm]	Plate Ø [mm]	Bolt hole Ø [mm]	Offset swivel castor [mm]
LRA-PATH 50G	BRA-PATH 50G	LRA-PATH 50G-FI *	50	19	75	Plain bore	69	43	11	25
LRA-PATH 50K-FK	BRA-PATH 50K-FK	LRA-PATH 50K-FI-FK *	50	19	75	Ball bearing (C)	69	43	11	25
LRA-PATH 75G	BRA-PATH 75G	LRA-PATH 75G-FI *	75	25	75	Plain bore	98	43	11	29
LRA-PATH 75K-FK	BRA-PATH 75K-FK	LRA-PATH 75K-FI-FK *	75	25	75	Ball bearing (C)	98	43	11	29
LKRA-PATH 80G	BKRA-PATH 80G	LKRA-PATH 80G-FI	80	32	120	Plain bore	108	57	13	40
LKRA-PATH 80G-11		LKRA-PATH 80G-11-FI	80	32	120	Plain bore	108	57	11	40
LKRA-PATH 80K-FK	BKRA-PATH 80K-FK	LKRA-PATH 80K-FI-FK	80	32	120	Ball bearing (C)	108	57	13	40
LKRA-PATH 80K-11-FK		LKRA-PATH 80K-11-FI-FK	80	32	120	Ball bearing (C)	108	57	11	40
LKRA-PATH 101G	BKRA-PATH 101G	LKRA-PATH 101G-FI	100	32	120	Plain bore	133	57	13	40
LKRA-PATH 101G-11		LKRA-PATH 101G-11-FI	100	32	120	Plain bore	133	57	11	40
LKRA-PATH 101K-FK	BKRA-PATH 101K-FK	LKRA-PATH 101K-FI-FK	100	32	120	Ball bearing (C)	133	57	13	40
LKRA-PATH 101K-11-FK		LKRA-PATH 101K-11-FI-FK	100	32	120	Ball bearing (C)	133	57	11	40
LKRA-PATH 126G	BKRA-PATH 126G	LKRA-PATH 126G-FI	125	32	120	Plain bore	158	57	13	40
LKRA-PATH 126G-11		LKRA-PATH 126G-11-FI	125	32	120	Plain bore	158	57	11	40
LKRA-PATH 126K-FK	BKRA-PATH 126K-FK	LKRA-PATH 126K-FI-FK	125	32	120	Ball bearing (C)	158	57	13	40
LKRA-PATH 126K-11-FK		LKRA-PATH 126K-11-FI-FK	125	32	120	Ball bearing (C)	158	57	11	40

\* Brake lever made of synthetic, refer to image below  
For stainless steel versions refer to page 348

### Options \*\*



	Image plain bore version	Image with synthetic brake lever	Electrically conductive version, non-marking grey ***	With threaded pin M10 x 30 M12 x 30	With plug-in pin Ø 11 x 30.5 ****	With synthetic expander fitting	With metal expander fitting
Technical description page			36, 39	74	75	75	75
Product code suffix			-ELS	-GS10 / -GS12	-ES	refer to page 111	refer to page 111
Available for		LRA...FI series as standard	all ball bearing versions	-GS10: LRA series -GS12: LKRA series	LRA series swivel castors	swivel castors bolt hole Ø11 (except ELS)	swivel castors with bolt hole Ø 11 mm

\*\* Additional options:  
1. Brackets in special colours (electrostatic powder coating), available upon request  
2. Bumpers AG / ARG series refer to page 111 (technical description page 84)

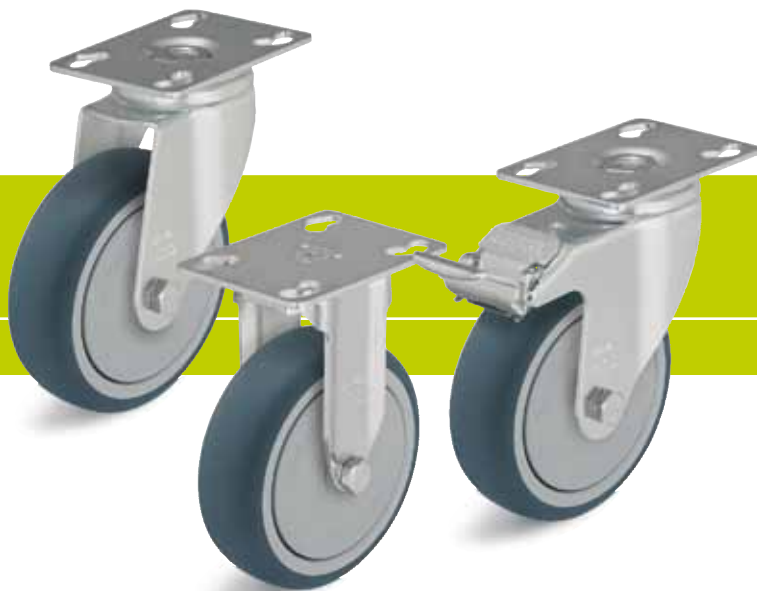
\*\*\* Load capacity is reduced by 35 % \*\*\*\* For suitable synthetic castor sockets for round tubes refer to page 111

Series: LPA-PATH, BPA-PATH, LKPA-PATH, BKPA-PATH

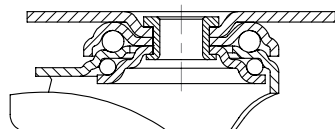
## Light duty castors with top plate fitting, wheel with thermoplastic polyurethane tread

75 - 120 kg

RoHS



1



**Brackets:** LPA/BPA, LKPA/BKPA series - Made of pressed steel, swivel bracket with double ball bearing in the swivel head, strong central kingpin, ball protection by the special top plate and ball disc design. The special Blickle dynamic riveting process of the swivel head results in minimal swivel head play and smooth rolling characteristics with an increased service life achieved by the work hardening of the ball race grooves. Bolted wheel axle. Zinc-plated, blue-passivated, Cr6-free.  
**Brake lever for swivel castors with 'stop-fix' brake:** LPA series are made of synthetic, LKPA series are made of steel.  
 Bracket overview: Page 62  
 Top plate drawings: Page 76  
 Wheel and swivel head 'stop-fix' brake: Page 80

**Wheels:** PATH series - Tread: Made of high-quality thermoplastic polyurethane, 94° shore A, dark grey, non-marking, non-staining.  
 Wheel centre: Made of high-quality, impact-resistant nylon, silver grey.  
 Bearing types: Plain bore or a centrally encapsulated ball bearing (C). Ball bearing (C) with synthetic thread guard as standard.  
 Detailed description: Page 99 and 42

Swivel castors	Fixed castors	Swivel castors with 'stop-fix' brake	Wheel Ø [mm]	Wheel width [mm]	Load capacity [kg]	Bearing type	Total height [mm]	Plate size [mm]	Bolt hole spacing [mm]	Bolt hole Ø [mm]	Offset swivel castor [mm]
LPA-PATH 50G	BPA-PATH 50G	LPA-PATH 50G-FI *	50	19	75	Plain bore	71	60 x 60	38x38/48x48	6.2	25
LPA-PATH 50K-FK	BPA-PATH 50K-FK	LPA-PATH 50K-FI-FK *	50	19	75	Ball bearing (C)	71	60 x 60	38x38/48x48	6.2	25
LPA-PATH 75G	BPA-PATH 75G	LPA-PATH 75G-FI *	75	25	75	Plain bore	100	60 x 60	38x38/48x48	6.2	29
LPA-PATH 75K-FK	BPA-PATH 75K-FK	LPA-PATH 75K-FI-FK *	75	25	75	Ball bearing (C)	100	60 x 60	38x38/48x48	6.2	29
LKPA-PATH 80G	BKPA-PATH 80G	LKPA-PATH 80G-FI	80	32	120	Plain bore	111	90 x 66	75x45/61x51	8.5	40
LKPA-PATH 80K-FK	BKPA-PATH 80K-FK	LKPA-PATH 80K-FI-FK	80	32	120	Ball bearing (C)	111	90 x 66	75x45/61x51	8.5	40
LKPA-PATH 101G	BKPA-PATH 101G	LKPA-PATH 101G-FI	100	32	120	Plain bore	136	90 x 66	75x45/61x51	8.5	40
LKPA-PATH 101K-FK	BKPA-PATH 101K-FK	LKPA-PATH 101K-FI-FK	100	32	120	Ball bearing (C)	136	90 x 66	75x45/61x51	8.5	40
LKPA-PATH 126G	BKPA-PATH 126G	LKPA-PATH 126G-FI	125	32	120	Plain bore	161	90 x 66	75x45/61x51	8.5	40
LKPA-PATH 126K-FK	BKPA-PATH 126K-FK	LKPA-PATH 126K-FI-FK	125	32	120	Ball bearing (C)	161	90 x 66	75x45/61x51	8.5	40

\* Brake lever made of synthetic, refer to image below  
 For stainless steel versions refer to page 349

### Options



	Image plain bore version	Image with synthetic brake lever	Electrically conductive version, non-marking grey **	Special colours (electrostatic powder coating)
Technical description page			36, 39	
Product code suffix			-ELS	
Available for		LPA...-FI series as standard	all ball bearing versions	upon request

\*\* Load capacity is reduced by 35 %



Series: LMDA-PATH

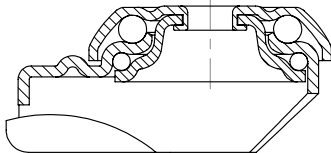
## Light duty twin wheel castors with bolt hole fitting, wheels with thermoplastic polyurethane tread

80 - 100 kg

RoHS



1



**Brackets:** LMDA series - Made of pressed steel, with double ball bearing in the swivel head, ball protection by the special top plate and ball disc design, dynamically pressed swivel head.  
Bolted wheel axle.  
Zinc-plated, blue-passivated, Cr6-free.  
Bracket overview: Page 62  
Wheel and swivel head 'stop-fix' brake: Page 80

**Wheels:** PATH series - Tread: Made of high-quality thermoplastic polyurethane, 94° shore A, dark grey, non-marking, non-staining.  
Wheel centre: Made of high-quality, impact-resistant nylon, silver grey.  
Bearing types: Plain bore or a centrally encapsulated ball bearing (C). Ball bearing (C) with synthetic thread guard as standard.  
Detailed description: Page 99 and 42

Swivel castors	Swivel castors with 'stop-fix' brake	Wheel Ø [mm]	Wheel width [mm]	Load capacity [kg]	Bearing type	Total height [mm]	Plate Ø [mm]	Bolt hole Ø [mm]	Offset [mm]
LMDA-PATH 50G	LMDA-PATH 50G-FI	50	2 x 19	80	Plain bore	71	41	10.2	31
LMDA-PATH 50K-FK	LMDA-PATH 50K-FI-FK	50	2 x 19	80	Ball bearing (C)	71	41	10.2	31
LMDA-PATH 75G	LMDA-PATH 75G-FI	75	2 x 25	100	Plain bore	98	55	10.2	34
LMDA-PATH 75K-FK	LMDA-PATH 75K-FI-FK	75	2 x 25	100	Ball bearing (C)	98	55	10.2	34

### Options



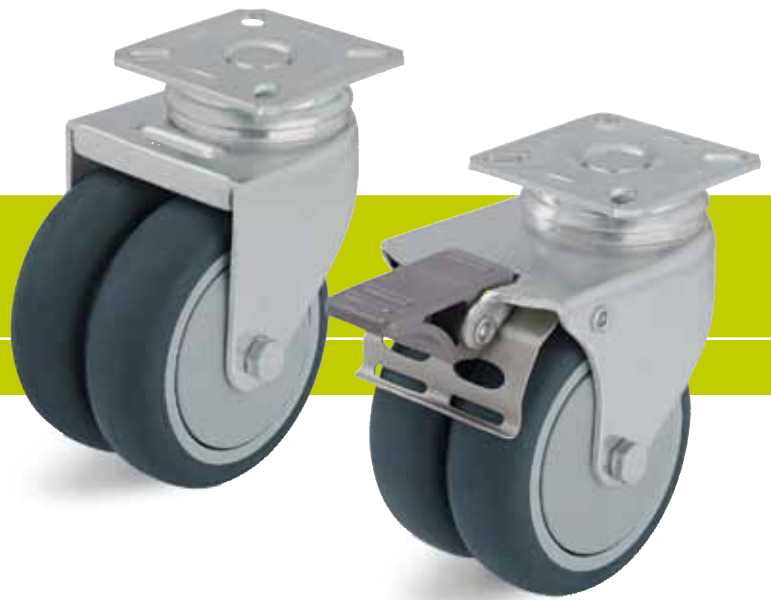
	Image plain bore version	Electrically conductive version, non-marking grey
Technical description page		36, 39
Product code suffix		-ELS
Available for		all ball bearing versions

Series: LDA-PATH

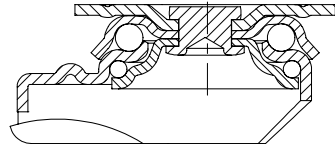
**Light duty twin wheel castors with top plate fitting, wheels with thermoplastic polyurethane tread**

80 - 100 kg

RoHS



1



**Brackets:** LDA series - Made of pressed steel, with double ball bearing in the swivel head, ball protection by the special top plate and ball disc design, dynamically pressed swivel head.  
 Bolted wheel axle.  
 Zinc-plated, blue-passivated, Cr6-free.  
 Bracket overview: Page 62  
 Top plate drawings: Page 76  
 Wheel and swivel head 'stop-fix' brake: Page 80

**Wheels:** PATH series - Tread: Made of high-quality thermoplastic polyurethane, 94° shore A, dark grey, non-marking, non-staining.  
 Wheel centre: Made of high-quality, impact-resistant nylon, silver grey.  
 Bearing types: Plain bore or a centrally encapsulated ball bearing (C). Ball bearing (C) with synthetic thread guard as standard.  
 Detailed description: Page 99 and 42



Swivel castors	Swivel castors with 'stop-fix' brake	Wheel Ø [mm]	Wheel width [mm]	Load capacity [kg]	Bearing type	Total height [mm]	Plate size [mm]	Bolt hole spacing [mm]	Bolt hole Ø [mm]	Offset [mm]
LDA-PATH 50G	LDA-PATH 50G-FI	50	2 x 19	80	Plain bore	71	60 x 60	38x38/48x48	6.2	31
LDA-PATH 50K-FK	LDA-PATH 50K-FI-FK	50	2 x 19	80	Ball bearing (C)	71	60 x 60	38x38/48x48	6.2	31
LDA-PATH 75G	LDA-PATH 75G-FI	75	2 x 25	100	Plain bore	101	60 x 60	40x40/46x46	6.2	34
LDA-PATH 75K-FK	LDA-PATH 75K-FI-FK	75	2 x 25	100	Ball bearing (C)	101	60 x 60	40x40/46x46	6.2	34

**Options**



	Image plain bore version	Electrically conductive version, non-marking grey
Technical description page		36, 39
Product code suffix		-ELS
Available for		all ball bearing versions

Series: POA

## Nylon wheels

75 - 280 kg

RoHS



1

<b>Tread &amp; tyre hardness</b>		70° shore D
<b>Temperature resistance</b>		-25° C - +80° C
<b>Rolling resistance</b>		excellent
<b>Operating noise</b>		reasonable
<b>Floor surface preservation</b>		reasonable

**POA-wheel series:**

Made of high-quality, impact-resistant nylon, 70° shore D hardness, very low rolling and swivel resistance, smooth running performance on even floors, high abrasion resistance, colour black. (Material description page 40)

**Bearing types:**

- Plain bore, corrosion-resistant
- Ball bearing: Two pressed-in ball bearings, lubricated with long-life grease.
- Ball bearing (C): A centrally encapsulated sealed ball bearing within the injected nylon, lubricated with long-life grease.

**Other features:**

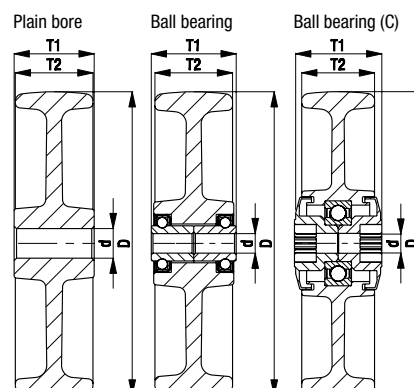
High chemical resistance to many aggressive substances (table page 36-37).  
 Operating temperature: -25° C to +80° C.  
 At ambient temperatures above +35° C the load capacity is reduced.  
 Maintenance-free under standard conditions.

**Wheel series overview page 43**

Wheels	Wheel Ø (D) [mm]	Wheel width (T2) [mm]	Load capacity [kg]	Bearing type	Axle bore Ø (d) [mm]	Hub length (T1) [mm]
POA 35/8G	35	25	75	Plain bore	8	29.5
POA 48/8K-RO *	48	16	75	Ball bearing	8	24
POA 50/8G	50	18	75	Plain bore	8	22
POA 52/12G	50	29	120	Plain bore	12	31
POA 58/10G	58	29	100	Plain bore	10	31
POA 65/10G	65	30	100	Plain bore	10	33
POA 65/12G	65	30	100	Plain bore	12	33
POA 75/8G	75	23	100	Plain bore	8	29.5
POA 80/12G	80	32	220	Plain bore	12	35
POA 102/8G	100	22	100	Plain bore	8	29.5
POA 100/12G	100	32	240	Plain bore	12	35
POA 100/8K	100	30	240	Ball bearing (C)	8	36
POA 125/12G	125	32	260	Plain bore	12	35
POA 125/8K	125	30	260	Ball bearing (C)	8	36
POA 150/12G	150	32	280	Plain bore	12	35

\* Colour red

For additional nylon wheels refer to page 276 + 277



Series: LRA-POA, BRA-POA, LKRA-POA, BKRA-POA

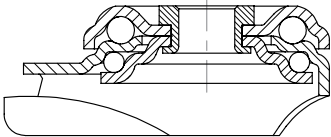
## Light duty castors with bolt hole fitting, with nylon wheel

70 - 120 kg

RoHS



1



**Brackets:** LRA/BRA, LKRA/BKRA series - Made of pressed steel, swivel bracket with double ball bearing in the swivel head, strong central kingpin, ball protection by the special top plate and ball disc design. The special Blickle dynamic riveting process of the swivel head results in minimal swivel head play and smooth rolling characteristics with an increased service life achieved by the work hardening of the ball race grooves.  
Bolted wheel axle.  
Zinc-plated, blue-passivated, Cr6-free.  
Brake lever for swivel castors with 'stop-fix' brake: LRA series are made of synthetic, LKRA series are made of steel.  
Bracket overview: Page 62  
Wheel and swivel head 'stop-fix' brake: Page 80

**Wheels:** POA series - Made of high-quality, impact-resistant nylon, 70° shore D, black.  
Bearing types: Plain bore or a centrally encapsulated ball bearing (C).  
Detailed description: Page 104 and 43



Swivel castors	Fixed castors	Swivel castors with 'stop-fix' brake	Wheel Ø [mm]	Wheel width [mm]	Load capacity [kg]	Bearing type	Total height [mm]	Plate Ø [mm]	Bolt hole Ø [mm]	Offset swivel castor [mm]
LRA-POA 35G			35	25	75	Plain bore	50	43	11	15
LRA-POA 50G	BRA-POA 50G	LRA-POA 50G-FI *	50	18	75	Plain bore	69	43	11	25
LKRA-POA 52G			50	29	120	Plain bore	70	57	13	29
LRA-POA 75G	BRA-POA 75G	LRA-POA 75G-FI *	75	23	75	Plain bore	98	43	11	29
LKRA-POA 80G	BKRA-POA 80G	LKRA-POA 80G-FI	80	32	120	Plain bore	108	57	13	40
LKRA-POA 80G-11		LKRA-POA 80G-11-FI	80	32	120	Plain bore	108	57	11	40
LRA-POA 102G		LRA-POA 102G-FI *	100	22	70	Plain bore	121	43	11	33
LKRA-POA 100G	BKRA-POA 100G	LKRA-POA 100G-FI	100	32	120	Plain bore	133	57	13	40
LKRA-POA 100G-11		LKRA-POA 100G-11-FI	100	32	120	Plain bore	133	57	11	40
LKRA-POA 100K	BKRA-POA 100K	LKRA-POA 100K-FI	100	30	120	Ball bearing (C)	133	57	13	40
LKRA-POA 100K-11		LKRA-POA 100K-11-FI	100	30	120	Ball bearing (C)	133	57	11	40
LKRA-POA 125G	BKRA-POA 125G	LKRA-POA 125G-FI	125	32	120	Plain bore	158	57	13	40
LKRA-POA 125G-11		LKRA-POA 125G-11-FI	125	32	120	Plain bore	158	57	11	40
LKRA-POA 125K	BKRA-POA 125K	LKRA-POA 125K-FI	125	30	120	Ball bearing (C)	158	57	13	40
LKRA-POA 125K-11		LKRA-POA 125K-11-FI	125	30	120	Ball bearing (C)	158	57	11	40
LKRA-POA 150G	BKRA-POA 150G	LKRA-POA 150G-FI	150	32	110	Plain bore	182	57	13	40
LKRA-POA 150G-11		LKRA-POA 150G-11-FI	150	32	110	Plain bore	182	57	11	40

\* Brake lever made of synthetic, refer to image below  
For stainless steel versions refer to page 350

### Options



	Image with synthetic brake lever	With threaded pin M10 x 30 M12 x 30	With plug-in pin Ø 11 x 30.5 **	With synthetic expander fitting	With metal expander fitting	Bumpers
Technical description page		74	75	75	75	84
Product code suffix		-GS10 / -GS12	-ES	refer to page 111	refer to page 111	AG / ARG series
Available for	LRA...-FI series as standard	-GS10: LRA series -GS12: LKRA series	LRA series swivel castors	swivel castors bolt hole Ø11(except Ø35)	swivel castors bolt hole Ø11(except Ø35)	refer to page 111

\*\* For suitable synthetic castor sockets for round tubes refer to page 111

Series: LPA-POA, BPA-POA, LKPA-POA, BKPA-POA

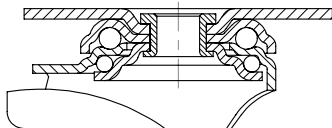
## Light duty castors with top plate fitting, with nylon wheel

70 - 120 kg

RoHS



1



**Brackets:** LPA/BPA, LKPA/BKPA series - Made of pressed steel, swivel bracket with double ball bearing in the swivel head, strong central kingpin, ball protection by the special top plate and ball disc design. The special Blickle dynamic riveting process of the swivel head results in minimal swivel head play and smooth rolling characteristics with an increased service life achieved by the work hardening of the ball race grooves. Bolted wheel axle. Zinc-plated, blue-passivated, Cr6-free.

**Wheels:** POA series - Made of high-quality, impact-resistant nylon, 70° shore D, black.

Bearing types: Plain bore or a centrally encapsulated ball bearing (C).

Detailed description: Page 104 and 43

Brake lever for swivel castors with 'stop-fix' brake: LPA series are made of synthetic, LKPA series are made of steel.

Bracket overview: Page 62  
Top plate drawings: Page 76  
Wheel and swivel head 'stop-fix' brake: Page 80

Swivel castors	Fixed castors	Swivel castors with 'stop-fix' brake	Wheel Ø [mm]	Wheel width [mm]	Load capacity [kg]	Bearing type	Total height [mm]	Plate size [mm]	Bolt hole spacing [mm]	Bolt hole Ø [mm]	Offset swivel castor [mm]
LPA-POA 35G		LPA-POA 50G-FI *	35	25	75	Plain bore	52	60 x 60	38x38/48x48	6.2	15
LPA-POA 50G	BPA-POA 50G	LPA-POA 50G-FI *	50	18	75	Plain bore	71	60 x 60	38x38/48x48	6.2	25
LKPA-POA 52G		LKPA-POA 52G-FI *	50	29	120	Plain bore	73	90 x 66	75x45/61x51	8.5	29
LPA-POA 75G	BPA-POA 75G	LPA-POA 75G-FI *	75	23	75	Plain bore	100	60 x 60	38x38/48x48	6.2	29
LKPA-POA 80G	BKPA-POA 80G	LKPA-POA 80G-FI *	80	32	120	Plain bore	111	90 x 66	75x45/61x51	8.5	40
LPA-POA 102G		LPA-POA 102G-FI *	100	22	70	Plain bore	123	60 x 60	38x38/48x48	6.2	33
LKPA-POA 100G	BKPA-POA 100G	LKPA-POA 100G-FI *	100	32	120	Plain bore	136	90 x 66	75x45/61x51	8.5	40
LKPA-POA 100K	BKPA-POA 100K	LKPA-POA 100K-FI *	100	30	120	Ball bearing (C)	136	90 x 66	75x45/61x51	8.5	40
LKPA-POA 125G	BKPA-POA 125G	LKPA-POA 125G-FI *	125	32	120	Plain bore	161	90 x 66	75x45/61x51	8.5	40
LKPA-POA 125K	BKPA-POA 125K	LKPA-POA 125K-FI *	125	30	120	Ball bearing (C)	161	90 x 66	75x45/61x51	8.5	40
LKPA-POA 150G	BKPA-POA 150G	LKPA-POA 150G-FI *	150	32	110	Plain bore	185	90 x 66	75x45/61x51	8.5	40

\* Brake lever made of synthetic, refer to image below  
For stainless steel versions refer to page 351

### Options



Image with synthetic brake lever

Technical description page

Product code suffix

Available for

LPA...-FI series as standard

Series: LMDA-POA

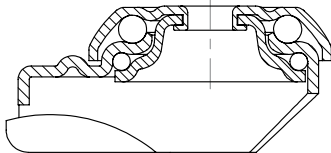
**Light duty twin wheel castors with bolt hole fitting, with nylon wheels**

80 - 100 kg

RoHS



1



**Brackets:** LMDA series - Made of pressed steel, with double ball bearing in the swivel head, ball protection by the special top plate and ball disc design, dynamically pressed swivel head.  
 Bolted wheel axle.  
 Zinc-plated, blue-passivated, Cr6-free.  
 Bracket overview: Page 62  
 Wheel and swivel head 'stop-fix' brake: Page 80

**Wheels:** POA series - Made of high-quality, impact-resistant nylon, 70° shore D, black.  
 Bearing type: Plain bore.  
 Detailed description: Page 104 and 43



Swivel castors	Swivel castors with 'stop-fix' brake	Wheel Ø [mm]	Wheel width [mm]	Load capacity [kg]	Bearing type	Total height [mm]	Plate Ø [mm]	Bolt hole Ø [mm]	Offset [mm]
LMDA-POA 50G	LMDA-POA 50G-FI	50	2 x 18	80	Plain bore	71	41	10.2	31
LMDA-POA 75G	LMDA-POA 75G-FI	75	2 x 23	100	Plain bore	98	55	10.2	34

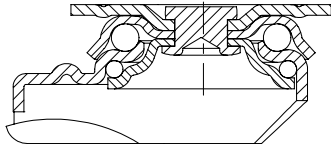
Series: LDA-POA

## Light duty twin wheel castors with top plate fitting, with nylon wheels

80 - 100 kg

RoHS

1



**Brackets:** LDA series - Made of pressed steel, with double ball bearing in the swivel head, ball protection by the special top plate and ball disc design, dynamically pressed swivel head.  
 Bolted wheel axle.  
 Zinc-plated, blue-passivated, Cr6-free.  
 Bracket overview: Page 62  
 Top plate drawings: Page 76  
 Wheel and swivel head 'stop-fix' brake: Page 80

**Wheels:** POA series - Made of high-quality, impact-resistant nylon, 70° shore D, black.  
 Bearing type: Plain bore.  
 Detailed description: Page 104 and 43

Swivel castors	Swivel castors with 'stop-fix' brake	Wheel Ø [mm]	Wheel width [mm]	Load capacity [kg]	Bearing type	Total height [mm]	Plate size [mm]	Bolt hole spacing [mm]	Bolt hole Ø [mm]	Offset [mm]
LDA-POA 50G	LDA-POA 50G-FI	50	2 x 18	80	Plain bore	71	60 x 60	38x38/48x48	6.2	31
LDA-POA 75G	LDA-POA 75G-FI	75	2 x 23	100	Plain bore	101	60 x 60	40x40/46x46	6.2	34

Series: LRA-VSTH, LKRA-VSTH

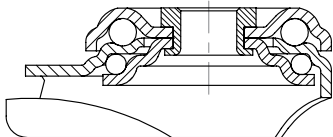
**Light duty castors with bolt hole fitting, wheel with Blickle Extrathane® polyurethane tread**

100 - 150 kg

RoHS



1



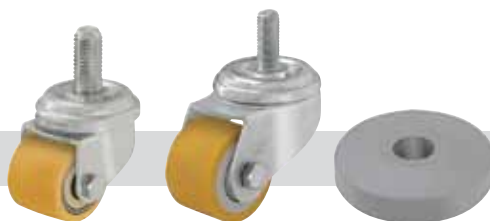
**Brackets:** LRA/LKRA series - Made of pressed steel, with double ball bearing in the swivel head, strong central kingpin, ball protection by the special top plate and ball disc design. The special Blickle dynamic riveting process of the swivel head results in minimal swivel head play and smooth rolling characteristics with an increased service life achieved by the work hardening of the ball race grooves. Bolted wheel axle. Zinc-plated, blue-passivated, Cr6-free. Bracket overview: Page 62

**Wheels:** VSTH series - Tread: Made of high-quality polyurethane-elastomer Blickle Extrathane®, 92° shore A, light brown, non-marking, non-staining. Wheel centre: Made of steel. Bearing type: Two pressed-in ball bearings. Detailed description: Page 258 and 48

Swivel castors	Wheel Ø [mm]	Wheel width [mm]	Load capacity [kg]	Bearing type	Total height [mm]	Plate Ø [mm]	Bolt hole Ø [mm]	Offset [mm]
LRA-VSTH 35K	35	27	100	Ball bearing	50	43	11	15
LKRA-VSTH 50K	50	33	150	Ball bearing	70	57	13	29

For further castors with high load capacity and low total height refer to category 21 'Compact castors'

**Options**



	With threaded pin M10 x 30 *	With threaded pin M12 x 30	Bumpers
Technical description page	74	74	84
Product code suffix	<b>-GS10</b>	<b>-GS12</b>	<b>AG / ARG series</b>
Available for	LRA-VSTH 35K	LKRA-VSTH 50K	refer to page 111

\* Load capacity is reduced by 20 %



Series: LPA-VSTH, LKPA-VSTH

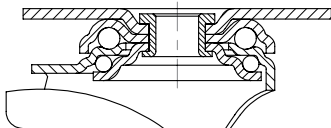
**Light duty castors with top plate fitting,  
wheel with Blickle Extrathane®  
polyurethane tread**

100 - 150 kg

✓RoHS



1



**Brackets:** LPA/LKPA series - Made of pressed steel, with double ball bearing in the swivel head, strong central kingpin, ball protection by the special top plate and ball disc design. The special Blickle dynamic riveting process of the swivel head results in minimal swivel head play and smooth rolling characteristics with an increased service life achieved by the work hardening of the ball race grooves. Bolted wheel axle. Zinc-plated, blue-passivated, Cr6-free. Bracket overview: Page 62 Top plate drawings: Page 76

**Wheels:** VSTH series - Tread: Made of high-quality polyurethane-elastomer Blickle Extrathane®, 92° shore A, light brown, non-marking, non-staining. Wheel centre: Made of steel. Bearing type: Two pressed-in ball bearings. Detailed description: Page 258 and 48

Swivel castors	Wheel Ø [mm]	Wheel width [mm]	Load capacity [kg]	Bearing type	Total height [mm]	Plate size [mm]	Bolt hole spacing [mm]	Bolt hole Ø [mm]	Offset [mm]
LPA-VSTH 35K	35	27	100	Ball bearing	52	60 x 60	38x38/48x48	6.2	15
LKPA-VSTH 50K	50	33	150	Ball bearing	73	90 x 66	75x45/61x51	8.5	29

For further castors with high load capacity and low total height refer to category 21 'Compact castors'

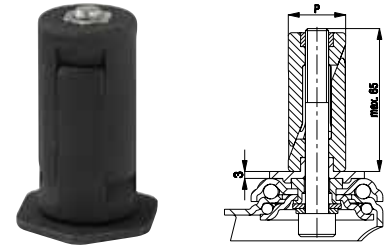
## Options for light duty castors



### Synthetic expander fitting for round tubes \*

Product code suffix for LRA series	Product code suffix for LKRA series	Internal tube dimension (P) [mm]	Available for all swivel castors LRA/LKRA series with bolt hole Ø 11 mm. Swivel castor and expander are secured against loosening by a positive location fit. The maximum fitting length is 65 mm. <b>The total height of the castor is increased by 3 mm.</b> Detailed description: Page 75
-ER02	-ER12	Ø 20 - 25	
-ER03	-ER13	Ø 25 - 30	
-ER04	-ER14	Ø 30 - 35	
-ER05	-ER15	Ø 35 - 40	

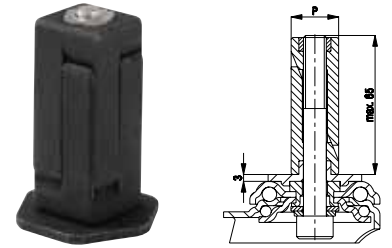
\* Corrosion-resistant versions page 352



### Synthetic expander fitting for square tubes \*

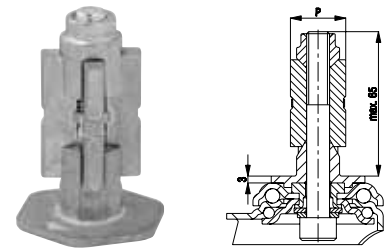
Product code suffix for LRA series	Product code suffix for LKRA series	Internal tube dimension (P) [mm]	Available for all swivel castors LRA/LKRA series with bolt hole Ø 11 mm. Swivel castor and expander are secured against loosening by a positive location fit. The maximum fitting length is 65 mm. <b>The total height of the castor is increased by 3 mm.</b> Detailed description: Page 75
-EV02	-EV12	□ 18 - 21	
-EV03	-EV13	□ 21 - 25	
-EV04	-EV14	□ 25 - 29	
-EV05	-EV15	□ 29 - 32	
-EV07	-EV17	□ 32 - 38.5	
	-EV18	□ 36 - 41	

\* Corrosion-resistant versions page 352



### Metal expander fitting for round and square tubes

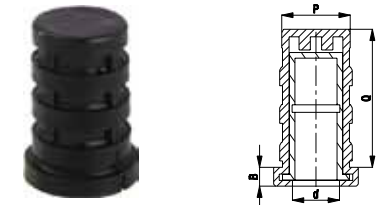
Product code suffix for LRA series	Product code suffix for LKRA series	Internal tube dim. round tube (P) [mm]	Internal tube dim. square tube (P) [mm]	Available for all swivel castors LRA/LKRA series with bolt hole Ø 11 mm. Swivel castor and expander are secured against loosening by a positive location fit. The maximum fitting length is 65 mm. <b>The total height of the castor is increased by 3 mm.</b> Detailed description: Page 75
-E01	-E11	Ø 17 - 19	□ 17 - 19	
-E02	-E12	Ø 20 - 25	□ 18 - 21	
-E03	-E13	Ø 25 - 30	□ 21 - 25	
-E04	-E14	Ø 30 - 35	□ 25 - 29	
-E05	-E15	Ø 35 - 40	□ 29 - 32	
-E07	-E17	Ø 39 - 45	□ 32 - 38.5	



### Synthetic castor sockets for round tubes

Product code	Internal tube dim. round tube (P) [mm]	Flange dimension Ø x height [mm]	Fitting length castor socket (Q) [mm]	Available for all swivel castors with plug-in pin Ø (d) 11 x 30.5 (LRA series). Detailed description: Page 75
RHR 20-18/11A	Ø 18.0	Ø 20.0 x 5.0	42	
RHR 22-19/11A	Ø 19.0	Ø 22.0 x 5.0	42	

Further dimensions upon request



### Bumpers for round and square tubes

Product code	Wheel Ø (D) [mm]	Wheel width (T1) [mm]	Bore hole (d) [mm]	In collisions, bumpers will help prevent wall and vehicle damage. Bumpers for round and square tubes are fixed or attached to the outer edge of the tubular frame of the vehicle. <b>AG series:</b> Made of soft synthetic polyethylene, 48° shore D hardness, colour silver grey RAL 7001, non-marking. <b>ARG series:</b> Made of solid rubber, 75° shore A hardness, colour grey, non-marking. Detailed description: Page 84
<b>Synthetic bumpers (polyethylene)</b>				
AG 100/R25	100	17.5	Ø 25	
AG 100/V25	100	17.5	□ 25 x 25	
AG 125/R25	125	17.5	Ø 25	
AG 125/V25	125	17.5	□ 25 x 25	
<b>Solid rubber bumpers</b>				
ARG 75/R10	75	23	Ø 10	
ARG 100/R26	100	23	Ø 26	
ARG 100/R32	100	23	Ø 32	
ARG 125/R26	125	23	Ø 26	
ARG 125/R32	125	23	Ø 32	

Further dimensions and special colours upon request

