

Twin castors. Now available from Blickle.

**Blickle MOVE.
Double the movement.**



reddot award 2014
winner

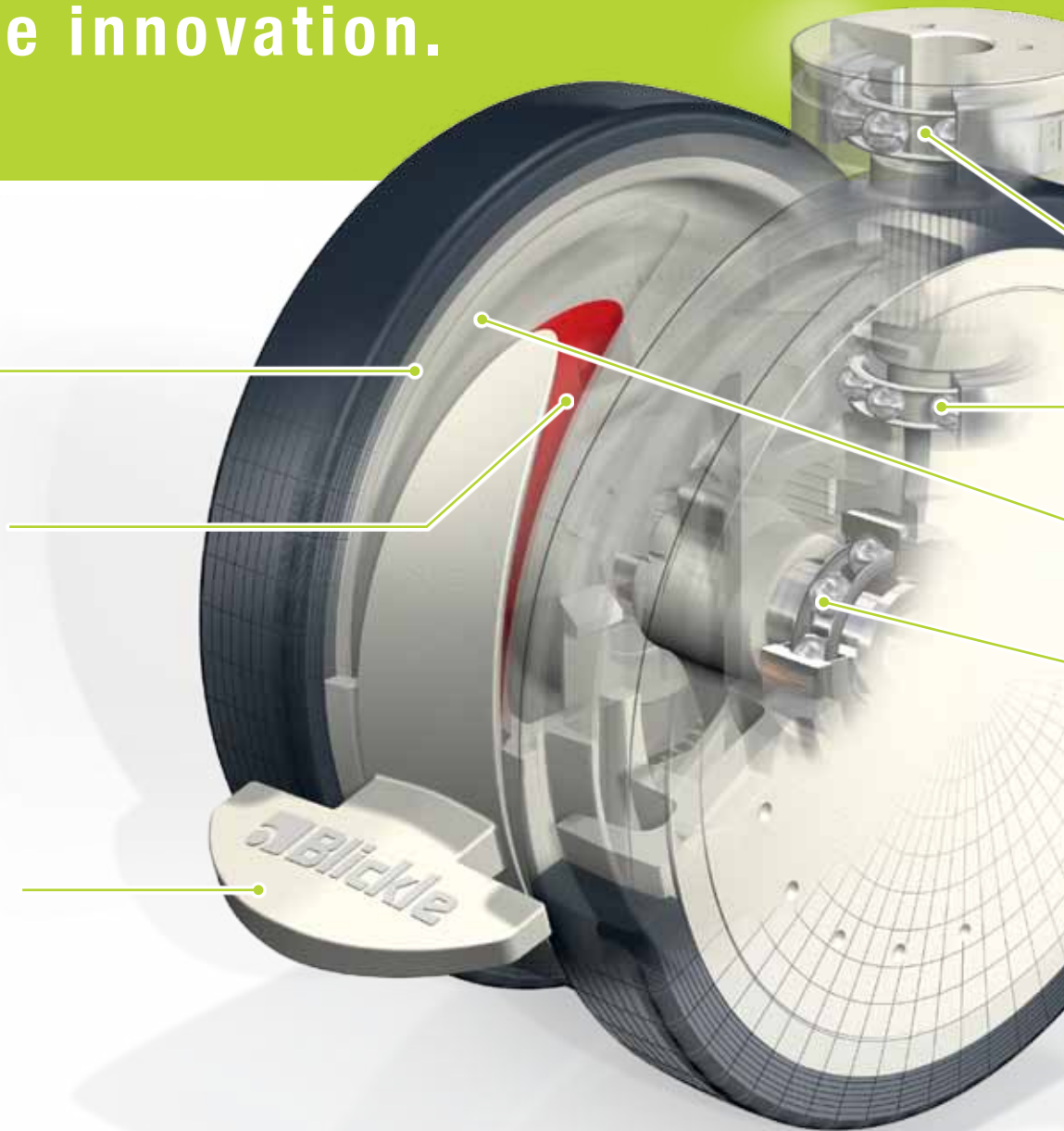
Established quality, new castors:

MOVE. The innovation.

Wheel centre
made of nylon

Colour coded lock
position indicator
optionally available

Ergonomic foot pedal
for non-positive locking
of the swivel head
and the wheel



High load capacity – no compromises.

Our demands are very simple: To develop the best castor or wheel for every application. With our latest innovation, the Blicke MOVE synthetic twin castors, we once more exhibit our technological leadership.

We innovate mobility – this is why the new Blicke MOVE synthetic twin castors offer our customers measurable advantages. Smoother running and manoeuvrability through high quality of treads. More design options due to the compact structural form. Perfect safety thanks to high-quality manufacturing and optionally available lock position indicator. Plus optimum hygiene due to the smooth surfaces and convenient cleaning options.

Despite their light weight, the Blicke MOVE twin castors offer increased mechanical stability. In short – they are attractive due to their modern design and are available in many colour variations. All of these characteristics virtually predestine Blicke MOVE twin castors for use in a variety of applications, whether medical equipment, transport systems, kitchen equipment or designer furniture. Anytime you want to move high loads without compromising anything!

MOVE. The components.



Two sealed precision ball bearings
in the swivel head

Bracket made of reinforced
nylon with a compact design

Double sealed precision ball
bearing

Tread made of high-quality
thermoplastic polyurethane (TPU)

Reasons that get the added value rolling.

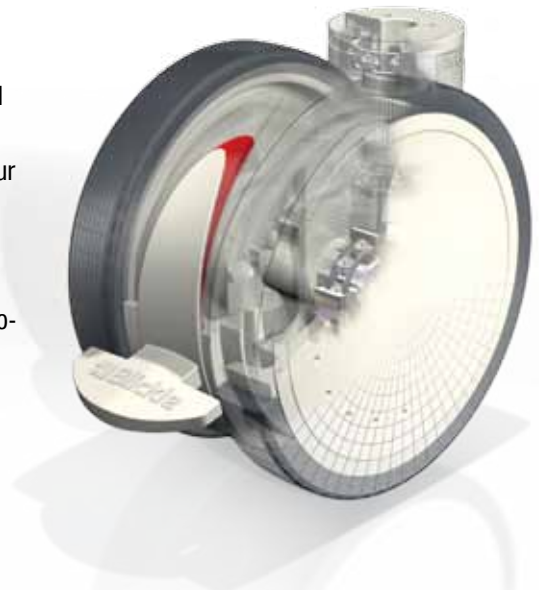
- **High load capacity and operational safety** – ideal dimension and design options
- **Maximum running comfort and best dynamic properties** – non-marking TPU tread
- **Low noise emission** – optimised design and use of high-quality materials
- **Compact structural form** – ideal ratio of overall height to wheel diameter
- **Use of reinforced nylon** – shape retention in hot and wet environments
- **Maximum stability with eco-friendly use of resources** – FEM calculations and 3D design
- **Perfect handling and assembly** – large variety of accessories and fittings available
- **Easy cleaning and washing machine suitability** – appropriate sealing, smooth surface structure with easy accessibility, corrosion-resistant version optionally available
- **Coloured marking of the brake lever position** – optionally available
- **Electrically conductive version according to DIN EN 12527** – optionally available

MOVE. The options.

Bracket and bearing.

The bracket was especially designed to meet higher demands on stability, impact resistance and service life. This is why high-quality reinforced nylon is used to fulfil these requirements and are resistant against most chemicals. When creating the dimensions of the range the Blickle engineers attained an optimum stress behaviour by means of FEM simulations, resulting in an environmentally-friendly use of high-quality materials.

Two sealed precision ball bearings in the swivel head ensure optimum swivelling properties and high operational safety even in rough operating conditions. High-quality ball bearings as wheel bearings with minimal bearing play enable absolutely quiet and smooth rolling as well as tracking stability.



Wheels and tread.

The hardness, shape and material of the treads considerably influence the running comfort and smoothness as well as the starting, rolling and swivel resistance of a castor. To match diverse requirements, we offer the MOVE with the PATH, high-quality thermoplastic polyurethane wheel series as standard. The tread offers good floor preservation, low-noise operation, high abrasion resistance, non-marking, non-staining and very high chemical resistance to many aggressive substances.

TPU can be used in a temperature range from -20°C to $+60^{\circ}\text{C}$ and temporarily up to $+90^{\circ}\text{C}$. It is moulded onto the nylon wheel centre as a **tread with 94° Shore A hardness**.



Optional lock position indicator.

Another unique selling point of the Blickle MOVE synthetic twin castors is the optionally available lock indicator. This displays the operating angle of the locking brake.



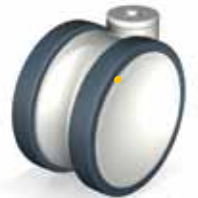
Stainless steel version.

All castor variations are available as a stainless steel version. Metal parts such as ball bearings in the swivel head and in the wheels, plus the axles, are made of chromium-nickel steel and therefore protected from humidity and corrosion.



Electrical conductivity.

Blickle MOVE castors are also available as an electrical conductive version with a leakage resistance of $R < 10^4 \Omega$ according to DIN EN 12527. The electrical conductivity prevents the possibility of the handler receiving electric shocks.



Colours.

As we are experts in synthetics technology and manufacture exclusively at our headquarters in Germany, we are also flexible when it comes to colour design and can comply with customer preferences. The basic variations are available in grey white RAL 9002 and silver grey RAL 7001.



Fitting variations.

We offer an extensive range of fittings that allow easy and fast assembly. Regardless of your product design – we can offer you a suitable solution. All variations of fittings and products are listed on the following pages.



Bolt hole fitting



Plate fitting



Stem fitting



Central braking system CS11



Threaded pin



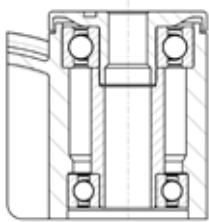
Expander fitting

Series: LKD-PATH

Synthetic twin castors Blickle MOVE colour grey white, wheel with thermoplastic rubber-tread

125 - 150 kg

RoHS



reddot award 2014
winner

Brackets: LKD series - Made of high-quality, impact resistant and reinforced nylon, with two double sealed precision ball bearings in the swivel head, with bolt hole fitting, grey white RAL 9002.

Wheels: PATH series - Tread: Made of high-quality thermoplastic polyurethane (TPU), 94° shore A hardness, grey, non-marking.

Wheel centre: Made of high-quality, impact resistant nylon, grey white RAL 9002.

Bearing type: Precision ball bearings.

Operating temperature: -20° C to +60° C.

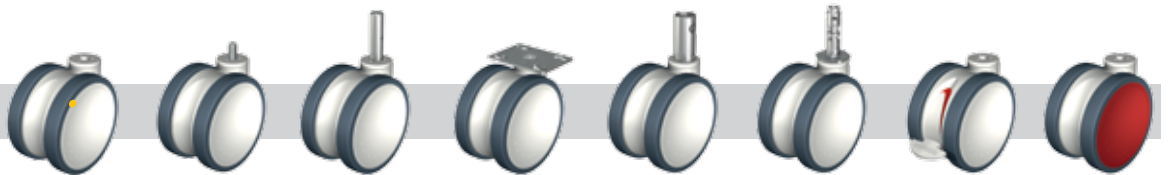
At ambient temperatures above +30° C the load capacity is reduced.



Swivel castors	Swivel castors with 'stop-fix' brake	Wheel Ø [mm]	Wheel width [mm]	Load capacity [kg]	Bearing type	Total height [mm]	Plate-Ø [mm]	Bolt hole Ø [mm]	Offset [mm]
LKD-PATH 125K	LKD-PATH 125K-FI	125	80	125	Ball bearing	130	42	13	40
LKD-PATH 125K-11	LKD-PATH 125K-11-FI	125	80	125	Ball bearing	130	42	11	40
LKD-PATH 150K	LKD-PATH 150K-FI	150	80	150	Ball bearing	155	42	13	53
LKD-PATH 150K-11	LKD-PATH 150K-11-FI	150	80	150	Ball bearing	155	42	11	53

For corrosion-resistant synthetic twin castors refer to page 8

Options



	Electrically conductive version R < 10 ⁴ Ω	With zinc-plated steel threaded pin M10 x 20 * M12 x 20	With stem fitting	With plate fitting **	With central braking system "central-stop"	With expander fitting *	With coloured identifier for "stop-fix" braked version	In special colour
Technical description page			11	11	10	10		
Product code suffix	-ELS	-GS10 / -GS12	-ZA51 / -ZA55 / -ZA58	-P25 / -P26	-CS11	refer to page 10		
Available for	all sizes	all sizes	all sizes	upon request	all sizes	upon request	upon request	upon request

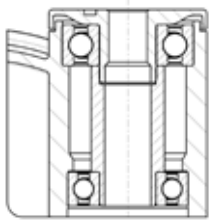
* Reduced load capacity
** Total height + 8 mm.

Series: LKDG-PATH

**Synthetic twin castors Blickle MOVE
colour silver grey,
wheel with thermoplastic rubber-tread**

125 - 150 kg

RoHS



reddot award 2014
winner

Brackets: LKD series - Made of high-quality, impact resistant and reinforced nylon, with two double sealed precision ball bearings in the swivel head, with bolt hole fitting, grey white RAL 9002.

Wheels: PATH series - Tread: Made of high-quality thermoplastic polyurethane (TPU), 94° shore A hardness, grey, non-marking.

Wheel centre: Made of high-quality, impact resistant nylon, grey white RAL 9002.

Bearing type: Precision ball bearings.

Operating temperature: -20° C to +60° C.

At ambient temperatures above +30° C the load capacity is reduced.



Swivel castors	Swivel castors with 'stop-fix' brake	Wheel Ø [mm]	Wheel width [mm]	Load capacity [kg]	Bearing type	Total height [mm]	Plate-Ø [mm]	Bolt hole Ø [mm]	Offset [mm]
LKDG-PATH 125K	LKDG-PATH 125K-FI	125	80	125	Ball bearing	130	42	13	40
LKDG-PATH 125K-11	LKDG-PATH 125K-11-FI	125	80	125	Ball bearing	130	42	11	40
LKDG-PATH 150K	LKDG-PATH 150K-FI	150	80	150	Ball bearing	155	42	13	53
LKDG-PATH 150K-11	LKDG-PATH 150K-11-FI	150	80	150	Ball bearing	155	42	11	53

For corrosion-resistant synthetic twin castors refer to page 9

Options



	Electrically conductive version R < 10 ⁴ Ω	With zinc-plated steel threaded pin M10 x 20 * M12 x 20	With stem fitting	With plate fitting **	With central braking system "central-stop"	With expander fitting *	With coloured identifier for "stop-fix" braked version	In special colour
Technical description page			11	11	10	10		
Product code suffix	-ELS	-GS10 / -GS12	-ZA51 / -ZA55 / -ZA58	-P25 / -P26	-CS11	refer to page 10		
Available for	all sizes	all sizes	all sizes	upon request	all sizes	upon request	upon request	upon request

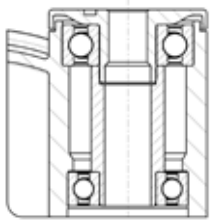
* Reduced load capacity
** Total height + 8 mm.

Series: LKDX-PATH

Synthetic twin castors Blickle MOVE, corrosion-resistant, colour grey white, wheel with thermoplastic rubber-tread

125 - 150 kg

RoHS



reddot award 2014 winner

Brackets: LKDX series - Made of high-quality, impact resistant and reinforced nylon, with two double sealed corrosion-resistant precision ball bearings in the swivel head, with bolt hole fitting, grey white RAL 9002. All parts incl. axle material are corrosion-resistant.

Wheels: PATH series - Tread: Made of high-quality thermoplastic polyurethane (TPU), 94° shore A hardness, grey, non-marking. Wheel centre: Made of high-quality, impact resistant nylon, grey white RAL 9002. Bearing type: Stainless steel precision ball bearings.

Operating temperature: -20° C to +60° C. At ambient temperatures above +30° C the load capacity is reduced.



Swivel castors	Swivel castors with 'stop-fix' brake	Wheel Ø [mm]	Wheel width [mm]	Load capacity [kg]	Bearing type	Total height [mm]	Plate-Ø [mm]	Bolt hole Ø [mm]	Offset [mm]
LKDX-PATH 125XK	LKDX-PATH 125XK-FI	125	80	125	Ball bearing	130	42	13	40
LKDX-PATH 125XK-11	LKDX-PATH 125XK-11-FI	125	80	125	Ball bearing	130	42	11	40
LKDX-PATH 150XK	LKDX-PATH 150XK-FI	150	80	150	Ball bearing	155	42	13	53
LKDX-PATH 150XK-11	LKDX-PATH 150XK-11-FI	150	80	150	Ball bearing	155	42	11	53

Options



	Electrically conductive version R < 10 ⁴ Ω	With stainless steel threaded pin M10 x 20 * M12 x 20	With stainless steel stem fitting	With stainless steel plate fitting **	With synthetic expander fitting *	With coloured identifier for "stop-fix" braked version	In special colour
Technical description page			11	11	10		
Product code suffix	-ELS	-GSX10 / -GSX12	-ZAX51 / -ZAX55 / -ZAX58	-PX25 / -PX26	refer to page 10		
Available for	all sizes	all sizes	all sizes	upon request	upon request	upon request	upon request

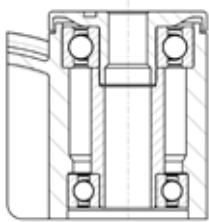
* Reduced load capacity
 ** Total height + 8 mm.

Series: LKDGX-PATH

Synthetic twin castors Blickle MOVE, corrosion-resistant, colour silver grey, wheel with thermoplastic rubber-tread

125 - 150 kg

RoHS



reddot award 2014 winner

Brackets: LKDX series - Made of high-quality, impact resistant and reinforced nylon, with two double sealed corrosion-resistant precision ball bearings in the swivel head, with bolt hole fitting, silver grey RAL 7001. All parts incl. axle material are corrosion-resistant.

Wheels: PATH series - Tread: Made of high-quality thermoplastic polyurethane (TPU), 94° shore A hardness, grey, non-marking.

Wheel centre: Made of high-quality, impact resistant nylon, silver grey RAL 7001.

Bearing type: Stainless steel precision ball bearings.

Operating temperature: -20° C to +60° C.

At ambient temperatures above +30° C the load capacity is reduced.



Swivel castors	Swivel castors with 'stop-fix' brake	Wheel Ø [mm]	Wheel width [mm]	Load capacity [kg]	Bearing type	Total height [mm]	Plate-Ø [mm]	Bolt hole Ø [mm]	Offset [mm]
LKDGX-PATH 125XK	LKDGX-PATH 125XK-FI	125	80	125	Ball bearing	130	42	13	40
LKDGX-PATH 125XK-11	LKDGX-PATH 125XK-11-FI	125	80	125	Ball bearing	130	42	11	40
LKDGX-PATH 150XK	LKDGX-PATH 150XK-FI	150	80	150	Ball bearing	155	42	13	53
LKDGX-PATH 150XK-11	LKDGX-PATH 150XK-11-FI	150	80	150	Ball bearing	155	42	11	53

Options



	Electrically conductive version R < 10 ⁴ Ω	With stainless steel threaded pin M10 x 20 * M12 x 20	With stainless steel stem fitting	With stainless steel plate fitting **	With synthetic expander fitting *	With coloured identifier for "stop-fix" braked version	In special colour
Technical description page			11	11	10		
Product code suffix	-ELS	-GSX10 / -GSX12	-ZAX51 / -ZAX55 / -ZAX58	-PX25 / -PX26	refer to page 10		
Available for	all sizes	all sizes	all sizes	upon request	upon request	upon request	upon request

* Reduced load capacity
 ** Total height + 8 mm.

Options for Blickle MOVE Synthetic castors



Central braking system 'central-stop' with stem fitting

Product code suffix	Stem height (A) [mm]	Operating angle (δ)	Stem \emptyset (D) [mm]	Distance of top plate to hexagon centre (E) [mm]	Width across flats (SW) [mm]
-CS11	58.5	35°	28	43.5	11

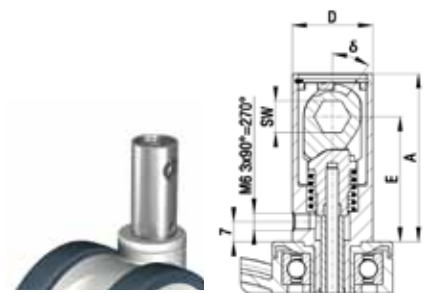
This brake system provides a locking of the swivel head and the wheel. It is operated by a central brake lever via a brake linkage at the trolley.

Advantages at a glance:

- Small operating angle requires low forces to apply and release the locking.
- Space saving construction by a brake mechanism which is integrated in the stem (zinc-plated stem, blue-passivated, Cr6-free).
- Central braking to two or four castors is possible using a linkage system, resulting in the improved flexibility to position and design the brake lever.

Available for all synthetic twin castors Blickle MOVE (except corrosion-resistant version).

Subject to technical changes. Available upon request.



Synthetic expander fitting for round tubes

Product code suffix	Product code suffix corrosion-resistant version	Internal tube dimension (P) [mm]	Available for all Blickle MOVE synthetic twin castors except the electrically conductive version. The castor and expander are secured against loosening by a positive location fit. The maximum fitting length is 65 mm. The total height of the castor is increased by 5 mm. Subject to technical changes. Available upon request.
-ER62	-EXR62	\emptyset 20 - 25	
-ER63	-EXR63	\emptyset 25 - 30	
-ER64	-EXR64	\emptyset 30 - 35	
-ER65	-EXR65	\emptyset 35 - 40	



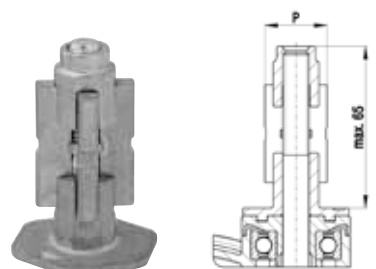
Synthetic expander fitting for square tubes

Product code suffix	Product code suffix corrosion-resistant version	Internal tube dimension (P) [mm]	Available for all Blickle MOVE synthetic twin castors except the electrically conductive version. The castor and expander are secured against loosening by a positive location fit. The maximum fitting length is 65 mm. The total height of the castor is increased by 5 mm. Subject to technical changes. Available upon request.
-EV62	-EXV62	\square 18 - 21	
-EV63	-EXV63	\square 21 - 25	
-EV64	-EXV64	\square 25 - 29	
-EV65	-EXV65	\square 29 - 32	
-EV66	-EXV66	\square 32 - 38.5	
-EV67	-EXV67	\square 32 - 38.5	



Metal expander fitting for round and square tubes

Product code suffix	Internal tube dimension round tube (P) [mm]	Internal tube dimension square tube (P) [mm]	Available for all Blickle MOVE synthetic twin castors except the electrically conductive version. The castor and expander are secured against loosening by a positive location fit. The maximum fitting length is 65 mm. The total height of the castor is increased by 5 mm. Subject to technical changes. Available upon request.
-E61	\emptyset 17 - 19	\square 17 - 19	
-E62	\emptyset 20 - 25	\square 18 - 21	
-E63	\emptyset 25 - 30	\square 21 - 25	
-E64	\emptyset 30 - 35	\square 25 - 29	
-E65	\emptyset 35 - 40	\square 29 - 32	
-E66	\emptyset 39 - 45	\square 32 - 38.5	
-E67	\emptyset 39 - 45	\square 32 - 38.5	



Options for Blickle MOVE Synthetic castors

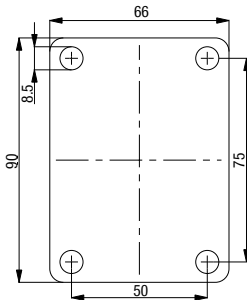
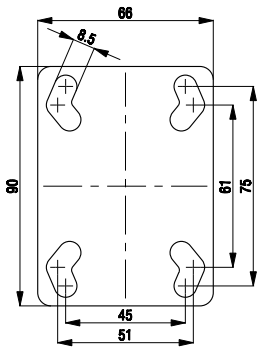
✓RoHS

Top plate fittings for Blickle MOVE Synthetic castors

Product code suffix	Product code suffix corrosion-resistant version	Plate size [mm]	Bolt hole spacing [mm]	Bolt hole-Ø [mm]	Zinc-plated, blue-passivated steel top plate fitting (Cr6-free), also available as corrosion-resistant plate fitting. Available upon request.
-P25	-PX25	90x66	75x45/61x51	8.5	
-P26	-PX26	90x66	75x50	8.5	

Plate No. 25

Plate No. 26



Steel plug-in stem for Blickle MOVE Synthetic castors

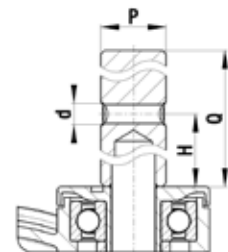
Product code suffix	Product code suffix corrosion-resistant version	Stem Ø	Stem length	Ø retaining hole	Position retaining hole
		P [mm]	Q [mm]	d [mm]	H [mm]
-ZA51	-ZAX51	18	62	M6	30
-ZA55	-ZAX55	22	45	M8	20
-ZA58	-ZAX58	27.5	45	M8	20

The castors are fitted by means of a plug-in stem which can be inserted into a corresponding tube or hole and secured in place. The stem is firmly connected to the castor and can be secured against turning or loosening by means of a fixing bolt (retaining hole).

The load capacities indicated are only attained if the entire diameter of the top plate of the swivel castor is in contact with the appliance or equipment.

Stainless steel plug-in stems are available for stainless steel swivel castors.
The above mentioned dimensions have to be considered when selecting plug-in stem fittings.

Subject to technical changes.



The new Blicke General Catalogue G15:

More than 30,000 wheels and castors on more than 500 pages.

Test Blicke's competence and capability yourself and order your copy of the General Catalogue G15 by calling the following number:

+49 7428 932-0 or via the internet at www.blicke.com.

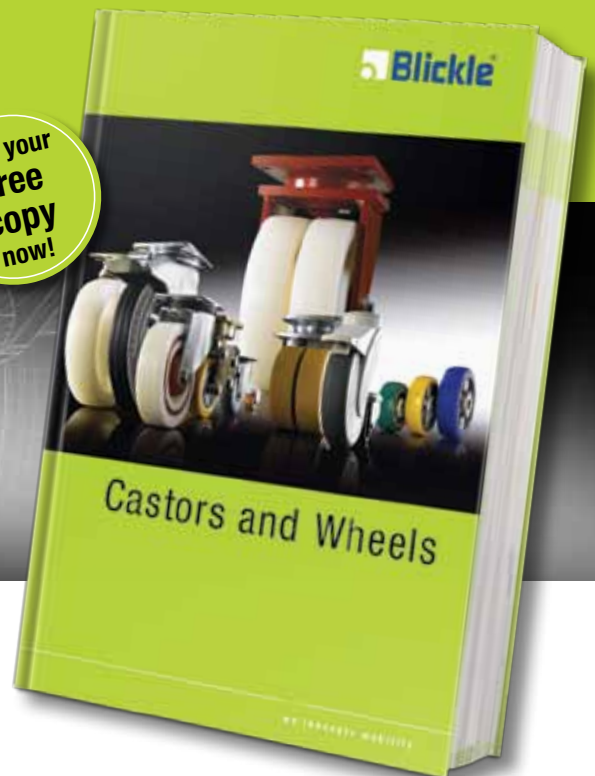
Online, you can also find the Blicke Product Configurator.

The new Blicke G15.



**Product
Configurator
on the
Internet!**

**Get your
free
copy
now!**



Your local Blicke distributor: