

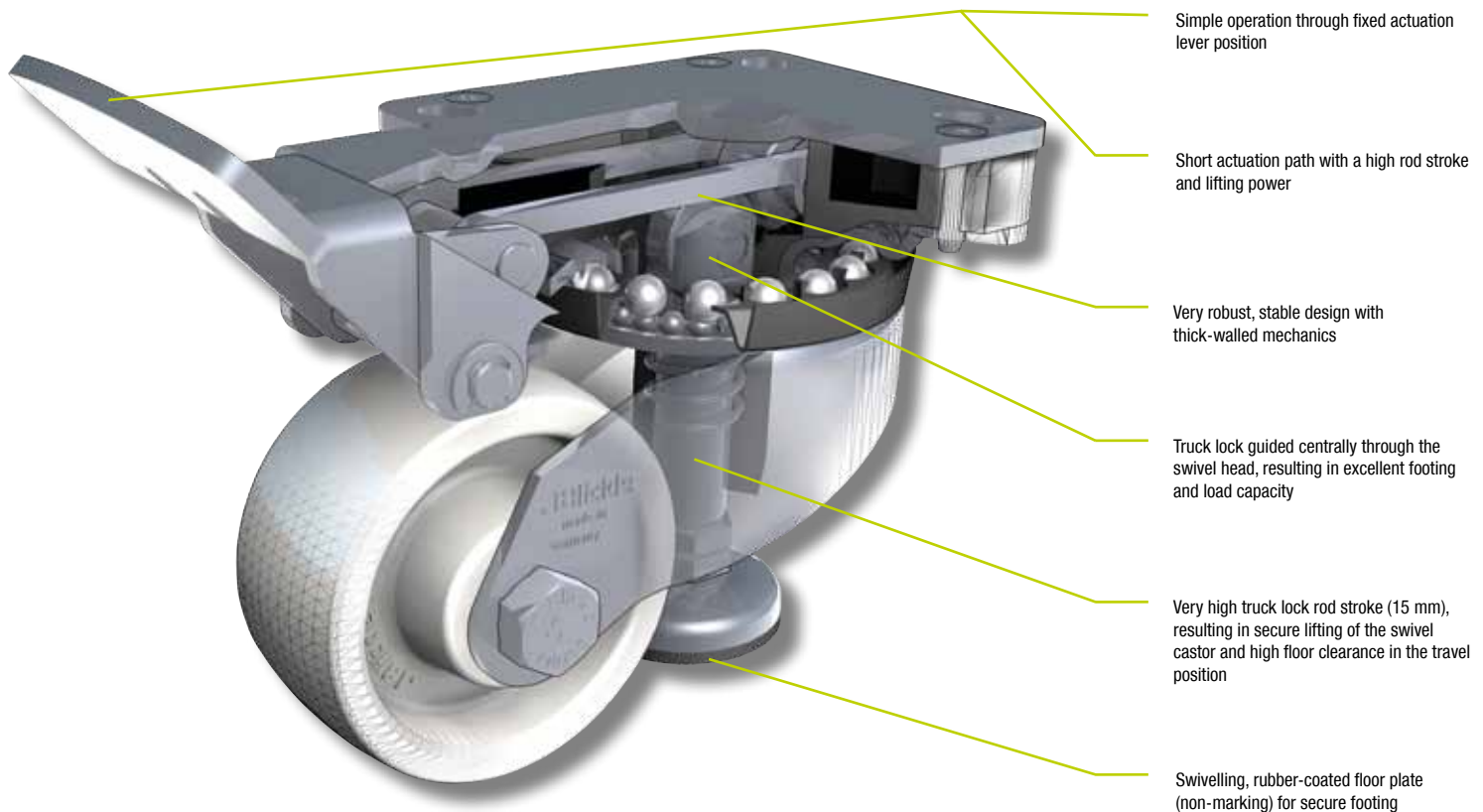
Secure footing. Easy levelling.

Blickle levelling castors with integrated truck lock



The new HRLK levelling castor series from Blickle:

Robust and easy to use.



Maximum operating comfort – secure footing

Blickle's new series HRLK levelling castors set benchmarks when it comes to transforming mobile works equipment and transport units into stable worktops.

The HRLK series was consistently redeveloped from the ground up based on market requirements for convenient operation. The result is impressive:

The ergonomically shaped actuation lever does not swivel with the castor and affords easy operation. With a short actuation path along with a high rod stroke and lifting power, even heavy equipment is easy to lift and secure.

The intelligent construction principle with a truck lock guided through the swivel head ensures high rigidity of the lifting mechanism and, in conjunction with the rubber-coated foot, results in excellent footing and load capacity.

Thanks to their compact design, Blickle levelling castors can also be used with limited installation space. Smaller irregularities in the floor are compensated for by the swivelling floor plate.

The Blickle levelling castor is also convincing in operation. The large rod stroke (15 mm) provides for high floor clearance. Blickle wheels made of high-quality nylon are nearly indestructible and easy to manoeuvre thanks to their low rolling resistance.

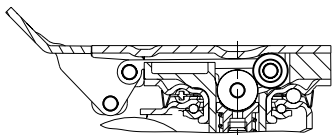
**Blickle's new levelling castor:
Operating comfort "made in Germany" – with no compromises!**

Series: HRLK-PO, HRLK-SPO, HRLK-POEV,
HRLK-ALST, HRLK-ALTH

Levelling castors with integrated truck lock, with top plate fitting

170 - 300 kg

RoHS



Brackets: HRLK series - Made of heavy pressed steel, with double ball bearing in the swivel head, swivel head seals. The special Blickle dynamic riveting process of the swivel head results in minimal swivel head play and smooth rolling characteristics with an increased service life achieved by the work hardening of the ball race grooves. Steel truck lock. Height adjustment with actuation lever. Bolted wheel axle. Zinc-plated, blue-passivated, Cr6-free.

Wheels: **PO series** - Made of high-quality, impact-resistant nylon, 70° shore D, natural white.
SPO series - Made of high-quality, impact-resistant nylon, very rugged, heavy wheel design, 70° shore D, natural white.
POEV series - Tyres: Made of high-quality elastic solid rubber in smooth rolling quality 'Blickle EasyRoll', 65° shore A, black. Wheel centre: Made of high-quality, impact-resistant nylon, black.
ALST series - Tread: Made of high-quality polyurethane-elastomer Blickle Softhane®, 75° shore A, green, non-marking, non-staining. Wheel centre: Made of die-cast aluminium.
ALTH series - Tread: Made of high-quality polyurethane-elastomer Blickle Extrathane®, 92° shore A, light brown, non-marking, non-staining. Wheel centre: Made of die-cast aluminium.
Bearing types: Plain bore, two pressed-in ball bearings or a centrally encapsulated ball bearing (C).

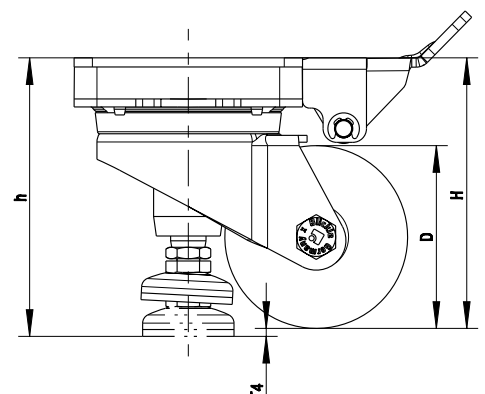
Swivel castors	Wheel Ø (D) [mm]	Wheel width (T2) [mm]	Load capacity [kg]	Bearing type	Total height (H) [mm]	Max. total height (h) [mm]	Lifting height (T4) [mm]	Plate size [mm]	Bolt hole spacing [mm]	Bolt hole Ø [mm]	Offset [mm]
PO series											
HRLK-PO 75G	75	32	200	Plain bore	118	120	2	100 x 85	80 x 60	9	56
HRLK-PO 82G	80	37	230	Plain bore	120	122	2	100 x 85	80 x 60	9	56
HRLK-PO 100G	100	37	230	Plain bore	140	142	2	100 x 85	80 x 60	9	65
HRLK-PO 100K	100	37	230	Ball bearing	140	142	2	100 x 85	80 x 60	9	65
SPO series											
HRLK-SPO 75G	75	32	300	Plain bore	118	120	2	100 x 85	80 x 60	9	56
HRLK-SPO 75K	75	32	300	Ball bearing	118	120	2	100 x 85	80 x 60	9	56
HRLK-SPO 80K	80	37	300	Ball bearing	120	122	2	100 x 85	80 x 60	9	56
POEV series											
HRLK-POEV 82K	80	40	170	Ball bearing (C)	120	122	2	100 x 85	80 x 60	9	56
HRLK-POEV 100K	100	38	200	Ball bearing (C)	140	142	2	100 x 85	80 x 60	9	65
ALST series											
HRLK-ALST 82K	80	40	230	Ball bearing	120	122	2	100 x 85	80 x 60	9	56
HRLK-ALST 100K	100	40	230	Ball bearing	140	142	2	100 x 85	80 x 60	9	65
ALTH series											
HRLK-ALTH 80K	80	30	180	Ball bearing	120	122	2	100 x 85	80 x 60	9	56
HRLK-ALTH 100K	100	40	230	Ball bearing	140	142	2	100 x 85	80 x 60	9	65

Options



	Image POEV series	Image ALST series	Image ALTH series	Stainless steel version
Technical description				
Product code				HRLKX-...
Available for				upon request

Matching synthetic adapter plate for total height compensation (+10 mm) for corresponding swivel and fixed castors: **Product code AP1**

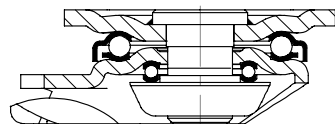


Series: HRLH-SPO, HRLHD-SPO

Levelling castors with integrated truck lock, with top plate fitting, with heavy duty nylon wheel

300 - 600 kg

RoHS

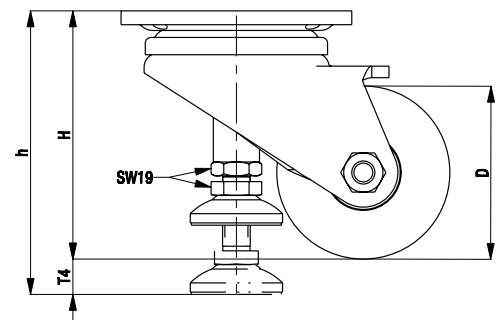
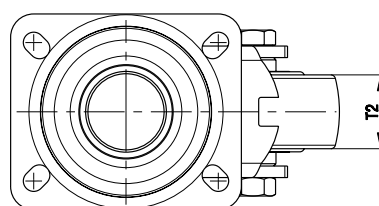


Brackets: HRLH/HRLHD series - Made of heavy pressed steel, with heavy fork and top plate fitting, very strong bolted and secured central kingpin, double ball bearing in the swivel head, additionally reinforced by the integration of **four specially shaped and hardened bearing seats** resulting in a very high resistance to shock and impact loads.
Steel truck lock. Height adjustment with flat spanner.
Bolted wheel axle.
Zinc-plated, blue-passivated, Cr6-free.

Wheels: SPO series - Made of high-quality, impact-resistant nylon, very rugged, heavy wheel design, 70° shore D, natural white.
Bearing type: Two pressed-in ball bearings.



Swivel castor	Twin wheel swivel castor	Wheel Ø (D) [mm]	Wheel width (T2) [mm]	Load capacity [kg]	Bearing type	Total height (H) [mm]	Max. total height (h) [mm]	Adjustment range (T4) [mm]	Plate size [mm]	Bolt hole spacing [mm]	Bolt hole Ø [mm]	Offset [mm]
HRLH-SPO 75K		75	32	300	Ball bearing	108	123	15	100 x 85	80 x 60	9	55
	HRLHD-SPO 75K	75	2 x 32	600	Ball bearing	108	123	15	100 x 85	80 x 60	9	55



Series: HRP-POA, HRSP-POA, HRSP-GSPO

Levelling castors with integrated truck lock, with top plate fitting, with nylon or extra heavy duty cast nylon wheel

180 - 2000 kg

RoHS



Brackets: HRP/HRSP series - Made of die-cast aluminium, with sealed ball bearing in the swivel head, steel top plate fitting.
Powder-coated, colour ivory.
Truck lock made of hard rubber, HRSP series made of aluminium, black.
Height adjustment with flat spanner or integrated adjustment wheel; HRSP series only with flat spanner.
Bolted wheel axle.
Steel parts are zinc-plated, blue-passivated, Cr6-free.

Wheels: POA series - Made of high-quality, impact-resistant nylon, 70° shore D, black.
GSPO series - Made of high-quality, impact-resistant, hard and tough, highly compressed cast nylon, 80° shore D, natural beige.
Bearing type: Plain bore.



Swivel castors	Wheel Ø (D) [mm]	Wheel width (T2) [mm]	Load capacity * [kg]	Bearing type	Total height (H) [mm]	Max. total height (h) [mm]	Adjustment range (T4) [mm]	Plate size [mm]	Bolt hole spacing [mm]	Bolt hole Ø [mm]	Offset [mm]
HRP-POA 45G	45	18	180	Plain bore	72	80	8	55 x 55	42 x 42	7	32
HRP-POA 50G	50	24	250	Plain bore	84	90	6	73 x 73	58 x 58	7	38
HRP-POA 63G	63	30	500	Plain bore	104	116	12	90 x 90	70 x 70	9	46
HRP-POA 72G	72	32	750	Plain bore	122	134	12	95 x 95	70 x 70	11	52
HRSP-POA 72G	72	32	1000	Plain bore	122	134	12	95 x 95	70 x 70	11	55
HRSP-GSPO 90G	90	55	2000	Plain bore	130	150	20	100 x 100	70 x 70	13	70

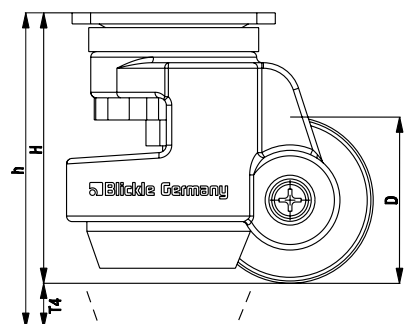
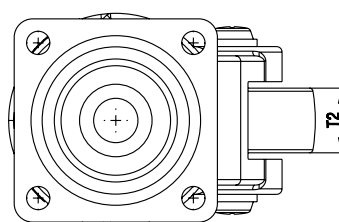
* The load capacity is determined under the following test conditions:

- Speed: max. 1 km/h
- Temperature: +15° C to +30° C
- Hard, horizontal surface without obstacles
- Travel distance: Cool down periods of 15 min. are required after max. 50 m

Options



	Stainless steel version	With bolt hole
Technical description		G15 catalogue p. 426
Product code		HRIG-POA ...
Available for	upon request	All series HRP castor Ø **



** The maximum total height of the HRIG-POA 63G and HRIG-POA 72G castors is reduced by 2 mm

The Blicke G15 general catalogue:

More than 30,000 wheels and castors on over 500 pages.

Experience Blicke's expertise and performance yourself: request the comprehensive G15 general catalogue by phone on +49 7428 932-0 or on the Internet at www.blicke.com.

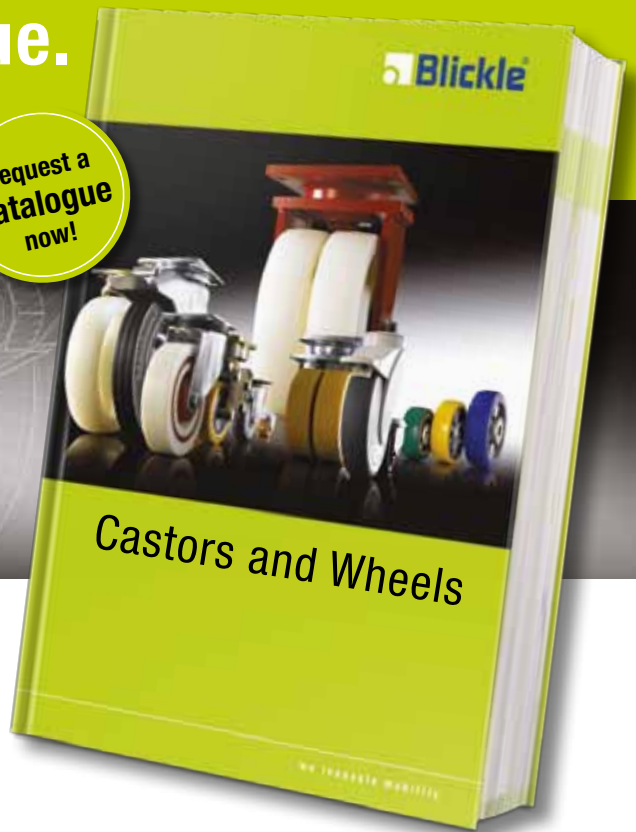
Our Blicke product configurator is also available online.

The Blicke G15 catalogue.



**Product
configurator
on the
Internet!**

**Request a
catalogue
now!**



Your on-site Blicke representative: